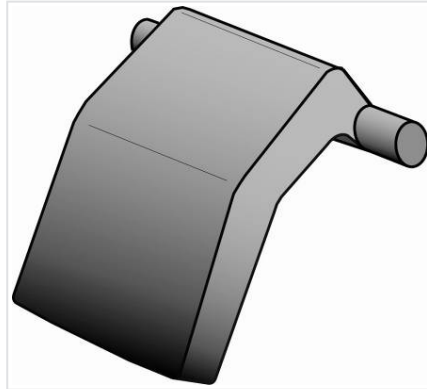


Cover anti-theft spline for Manhole cover KOREX 600 and BELSYS 600



Version	Mass	References
Spline alone	0.15 kg	170900
Box with 1 spline and installation note	0.15 kg	C38
Box with 10 splines (to equip 10 manhole covers)	1.50 kg	C59

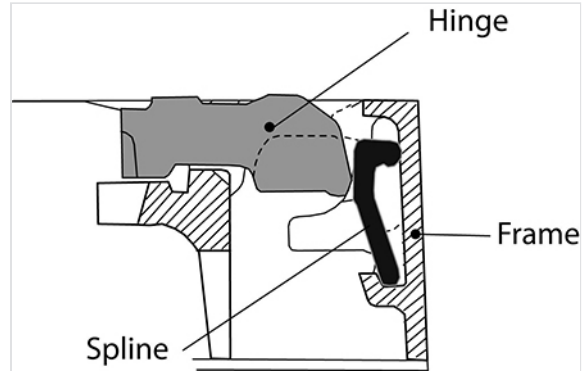
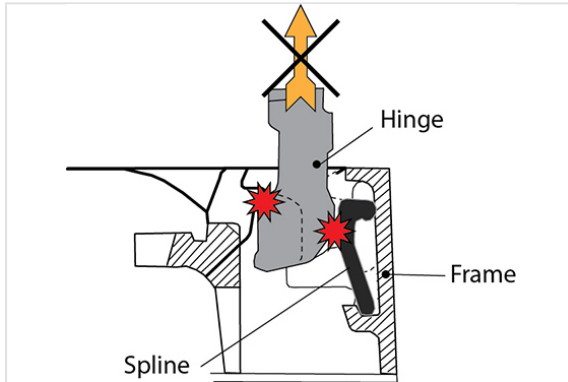
The manhole cover KOREX 600 and BELSYS 600 can be delivered with the spline and the installation note in a box attached on the frame.

The manhole cover KOREX and BELSYS 600 can be equipped with a cover anti-theft spline.

This spline located in the hinge box prevents any extraction of the cover without modifying its operation.

The spline is located in a specific housing of the hinge box and cannot be dismantled any more thereafter.

Principle of operation Spline with cover closed = no interferen



The information on this sketch is, to the best of our knowledge correct at the time of printing. However Saint-Gobain are constantly looking at ways of improving their products and services therefore reserve the right to change without prior notice, any of the data shown. Any orders placed will be subject to our Standard Conditions of Sale, available on request.

COPYRIGHT AND DESIGN RIGHT: This drawing is the exclusive property of Saint-Gobain PAM UK and is confidential and must not be reproduced or disclosed for any third party without written consent. It must be used only for the purpose for which it has been issued and is returnable on request