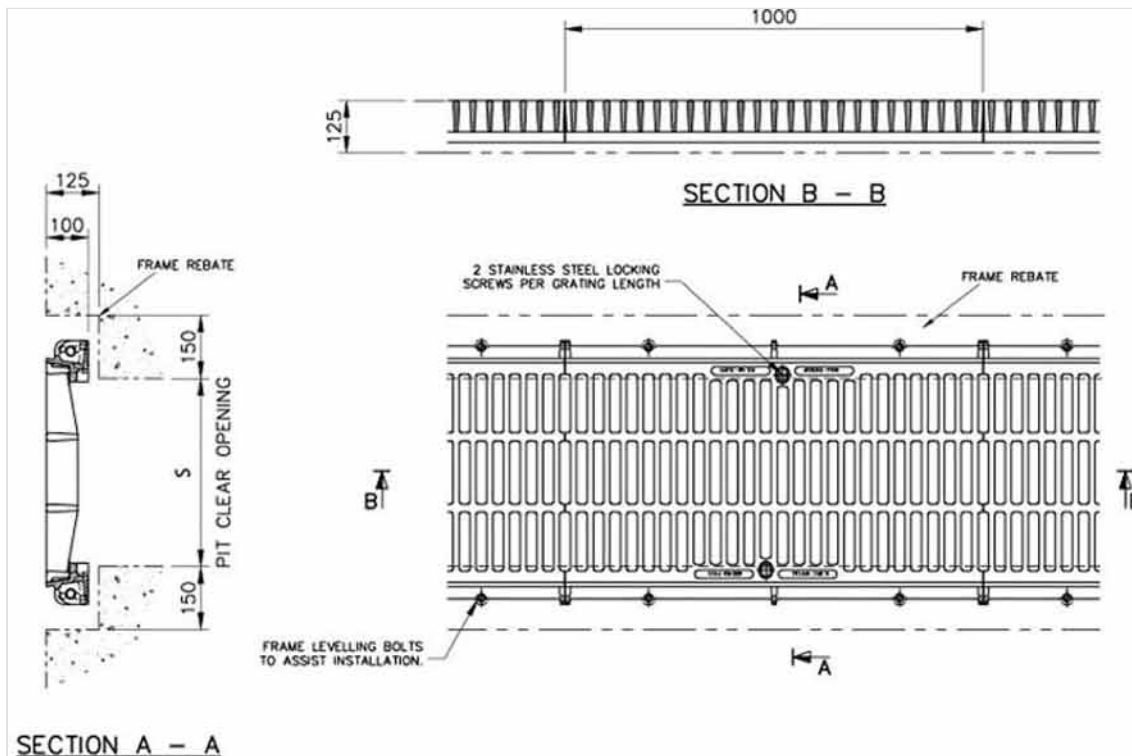


## GATIC Grating on 2 T Section Frame - F900 class - Assembly on channels



Version	Width (mm)	Length (mm)	H (mm)	Waterway area	Mass (kg)
Grating + 2 T section frame	300	1000	100	18.13 dm <sup>2</sup>	91
End plate				-	3.7
Grating + 2 T section frame	450	1000	100	26.29 dm <sup>2</sup>	121
End plate				-	4.9
Grating + 2 T section frame	600	1000	100	34.45 dm <sup>2</sup>	165
End plate				-	6.1
Grating + 2 T section frame	750	1000	100	43.29 dm <sup>2</sup>	216
End plate				-	7.3
Grating + 2 T section frame	810	1000	100	44.66 dm <sup>2</sup>	262
End plate				-	7.7

Important: gratings delivered in the frame of large projects: minimum quantities 100 pieces per type



### Material and coating:

- Grating and frame in Ductile Iron: bituminous varnish

### Field of application:

- F900 class (Group 6) according to standard EN124-2, areas imposing particularly high wheel loads, such as aircraft pavements, etc...

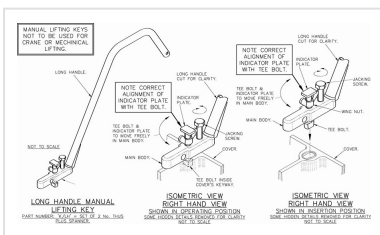
### Main characteristics:

- Machined and greased bearing surfaces.
- Adjusting screw for levelling of the frame.
- Locked gratings on their T section frame.
- Accessories of handling: Set of keys D17, [D18](#) or [D20](#) reference.

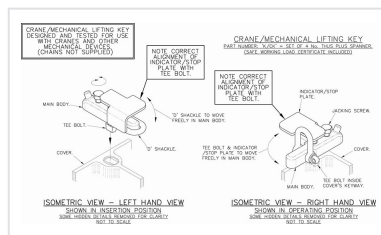
**Nota:**

- In addition to the grating on section frame, please buy a plate at each end of the channel
- Provide a junction (expansion) every 25 m

**Linked products**



**Long handle manual lifting key**



**Mechanical key**

The information on this sketch is, to the best of our knowledge correct at the time of printing. However Saint-Gobain are constantly looking at ways of improving their products and services therefore reserve the right to change without prior notice, any of the data shown. Any orders placed will be subject to our Standard Conditions of Sale, available on request.

**COPYRIGHT AND DESIGN RIGHT :** This drawing is the exclusive property of Saint-Gobain PAM UK and is confidential and must not be reproduced or disclosed for any third party without written consent. It must be used only for the purpose for which it has been issued and is returnable on request