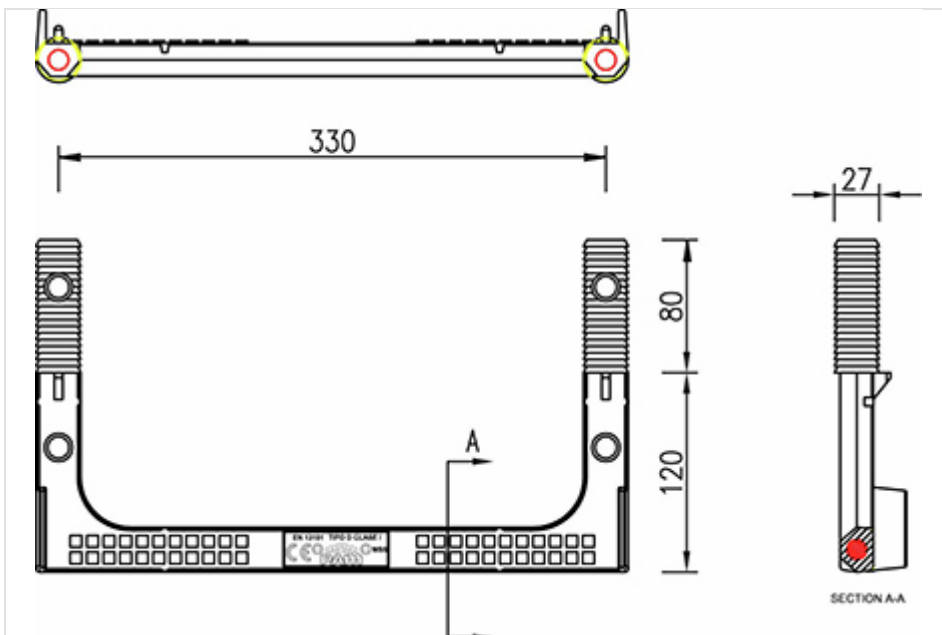


Manhole step of polypropylene 330mm



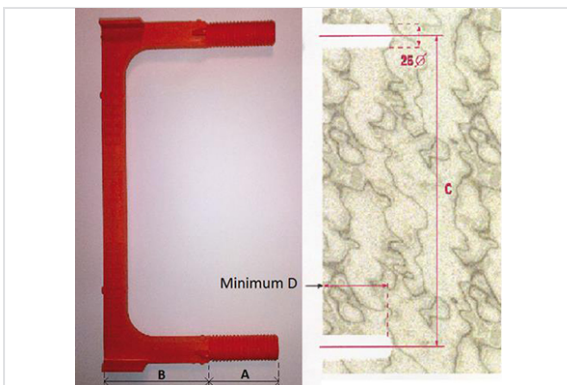
Packaging	Mass	References
	0.78 kg	C67



Main characteristics:

- Material and coating: corrugated steel core of 12mm covered with Copolymer Polypropylene of high impact resistance.
- Manhole steps have patterned surface to avoid falls.
- In accordance with EN 13101:
 - Test of load: deflection $\leq 10\text{mm}$ on a vertical load of 2 kN, with permanent deflection $\leq 2\text{mm}$ - deflection $\leq 50\text{mm}$ on 4 kN, class I
 - Unfix: minimal effort of 5 kN
 - Impact: mass 20 kg drop shot to fall down from a height of 1 m
 - Twisting: $\leq 5\text{mm}$ in the whole extension of the front bar

Installation



Once concrete is hardened two 25 mm diameter holes are drilled to install the step. There should be a distance of 330/300mm between the center points of the two holes and a 85/105mm depth (it depends upon the model).

The manhole step should be tapped on each end alternately until fully inserted to a depth of 80/100mm.

It is essential to check that the holes are drilled accurately. Otherwise there will be necessary to fill in with mortar or filler.

The information on this sketch is, to the best of our knowledge correct at the time of printing. However Saint-Gobain are constantly looking at ways of improving their products and services therefore reserve the right to change without prior notice, any of the data shown. Any orders placed will be subject to our Standard Conditions of Sale, available on request.

COPYRIGHT AND DESIGN RIGHT : This drawing is the exclusive property of Saint-Gobain PAM UK and is confidential and must not be reproduced or disclosed for any third party without written consent. It must be used only for the purpose for which it has been issued and is returnable on request