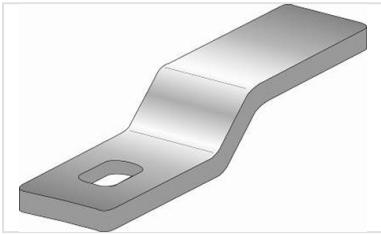


## ¼ turn locks - Bars

### Stainless steel bar

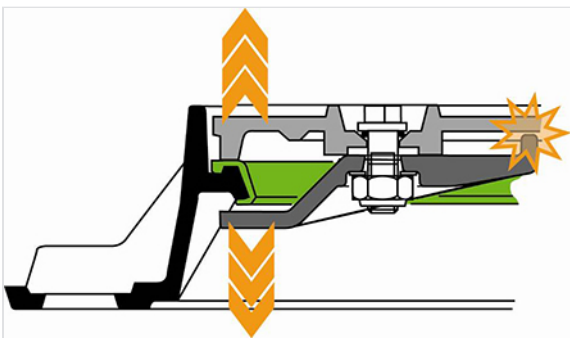


Under the action of a crowbar, the steel bar of a ¼ turn lock can bend, and to escape from its housing under the track of ring and so not to more provide the function of locking of the cover. It corresponds to a weak need of security.

### Ductile iron bar



The geometry of the cast iron bars makes it possible to resist important efforts thanks to its rib (increase in rigidity) and with the reuse of the effort on the cover. Although being able to develop several tonnes of effort, a man with a crowbar cannot open the protected product with a cast iron bar.



*The information on this sketch is, to the best of our knowledge correct at the time of printing. However Saint-Gobain are constantly looking at ways of improving their products and services therefore reserve the right to change without prior notice, any of the data shown. Any orders placed will be subject to our Standard Conditions of Sale, available on request.*

*COPYRIGHT AND DESIGN RIGHT : This drawing is the exclusive property of Saint-Gobain PAM UK and is confidential and must not be reproduced or disclosed for any third party without written consent. It must be used only for the purpose for which it has been issued and is returnable on request*