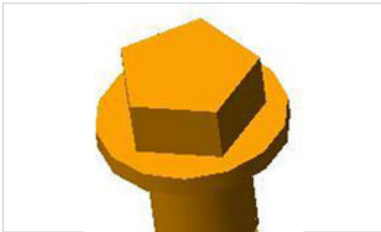


¼ turn locks - Heads of handling

Pentagonal form requiring the use of the handling key PENTA



[Handling key PENTA](#)

Head of control to the complex form, difficult to read by the people badly disposed and incompatible with the usual tools.



Require the [handling key SCS](#).


This key is solidarized in head of handling. It can be to release only by voluntary action.

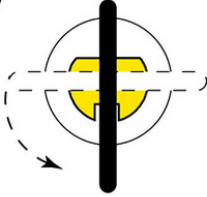
It is not conceived for the rising of the covers nor of the gratings and it is strongly disadvised using it for the handling of those.

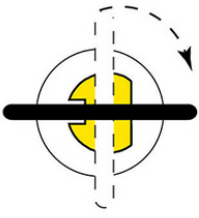
It is important to think of withdrawing the key before back in circulation of the inspected manhole covers or gratings.

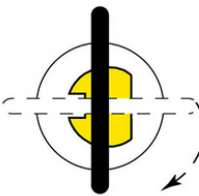
USE OF **SCS** KEY

(UNLOCKED COVER)

- 

Lift the trigger.
Push the key onto the bolt.
- 


Turn 90° to the left to secure
the key on the bolt.
- 

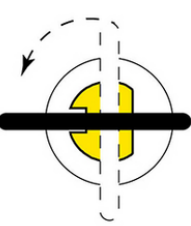
Turn 90° to the right to lock
the cover.
- 

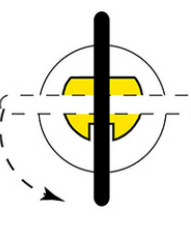
Release the key.
Lift the trigger.
Turn 90° to the right.

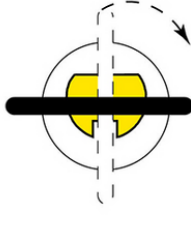
USE OF SCS KEY

(LOCKED COVER)

- 

Lift the trigger.
Push the key onto the bolt.
- 

Turn 90° to the left to secure
the key on the bolt.
- 

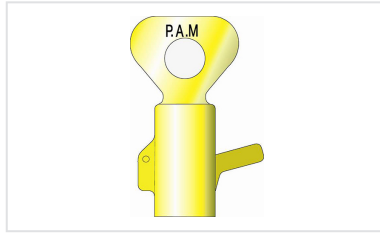
Turn 90° to the left to
unlock the cover.
- 

Release the key.
Lift the trigger.
Turn 90° to the right.

Linked products



Handling key PENTA



Handling key SCS

The information on this sketch is, to the best of our knowledge correct at the time of printing. However Saint-Gobain are constantly looking at ways of improving their products and services therefore reserve the right to change without prior notice, any of the data shown. Any orders placed will be subject to our Standard Conditions of Sale, available on request.

COPYRIGHT AND DESIGN RIGHT : This drawing is the exclusive property of Saint-Gobain PAM UK and is confidential and must not be reproduced or disclosed for any third party without written consent. It must be used only for the purpose for which it has been issued and is returnable on request