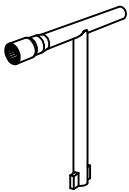


MBU INFORMATION SHEET

See "Opt-Emax Lock Kits" & "Opt-Emax Lock" Information Sheets for Kits and fitting instructions

When fitted with SCS lock covers need std lifting keys.

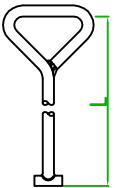


Locking/Lifting Key for Hex Head locked Units

- 190664 (RMA41) 175mm Long
- 205435 600mm Long

USE LIFTING KEY(S):

- 190668 (RMA57) 610mm LONG
- 190667 (RMA56) 467mm LONG
- 190666 (RMA55) 381mm LONG
- C50 (RMA62) 152mm LONG

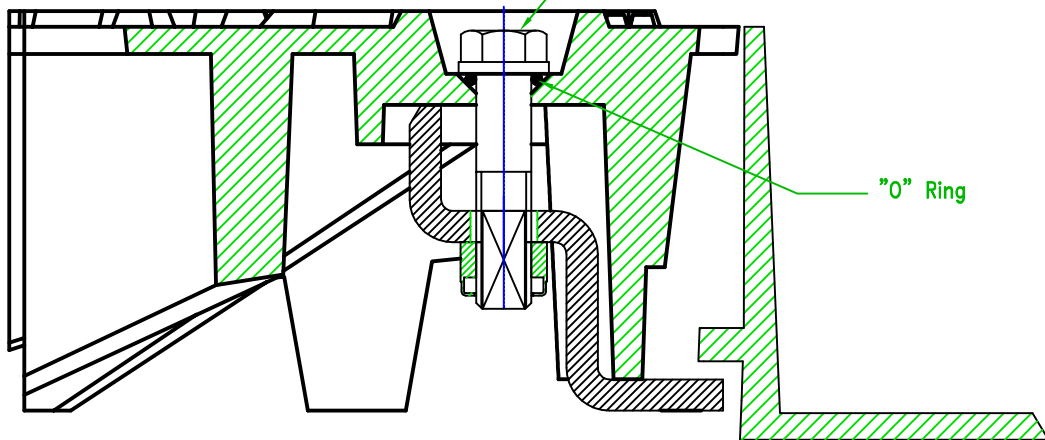


SCS Locking Key C18 (HM402)



Lock head, Hex type or SCS.

To operate the Lock - Hex head requires 19mm socket SCS requires C18 key



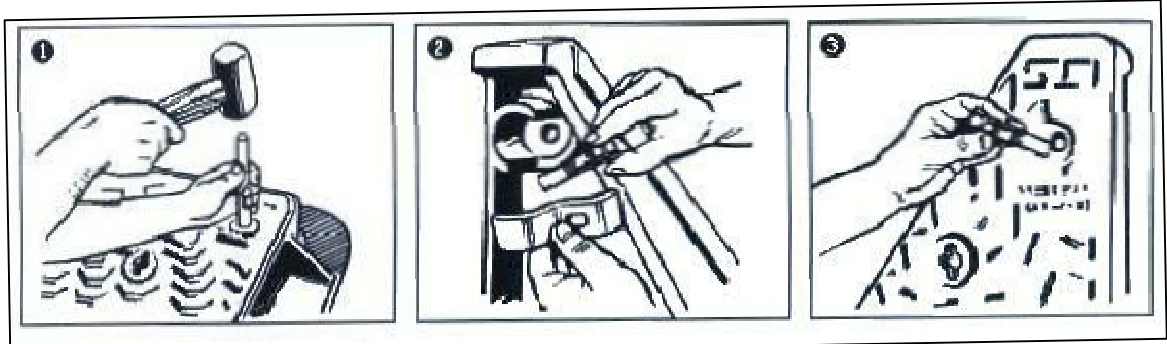
"O" Ring

Section through Opt-Emax lock, cover and frame.

Reference	TURN BUCKLE LOCK		ISSUE No	3
	TURN BUCKLE LOCK RETRO FITTING INSTRUCTIONS FOR LOCKING SYSTEM		Date	19/05/11
			Scale	N.T.S.
			Drawn	SPB

MBU INFORMATION SHEET

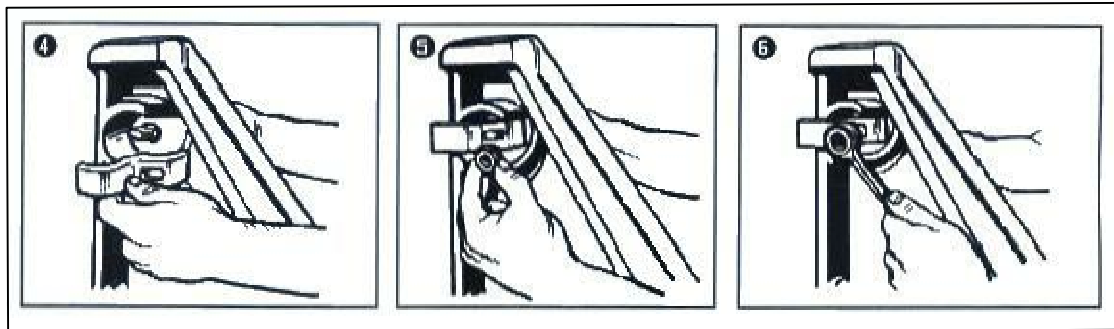
This Quarter-Turn locking system is used on Aquamax, Opt-Emax and Rexus units. Fitting principles are common to all units, however lock components may vary. Ensure correct Locking Kit is used. (Illustration shows Opt-Emax unit)



Using the knock out punch supplied (or similar rod/punch of 15mm diameter) and a heavy hammer, simply tap out the "knockout" hole in the cover.

Above shows the bolt (with black 'O' ring, neoprene washer, underneath the bolt head) and the locking bracket.

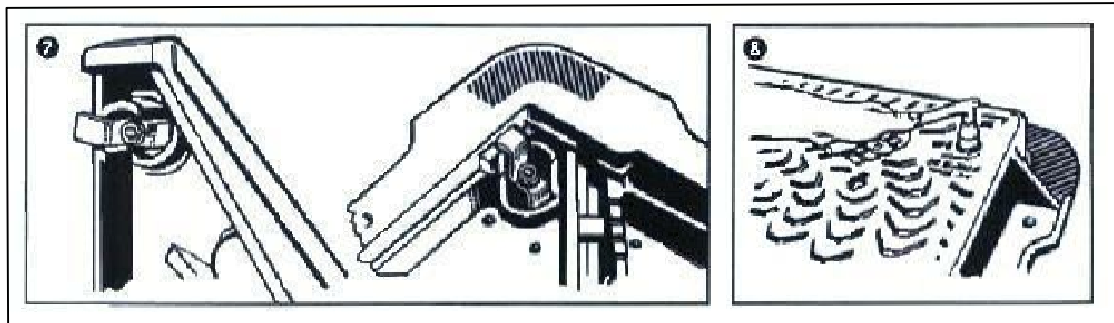
Place the bolt in position, through the hole from the top side of the cover.



Offer the bracket up to the bolt, correctly seating the squared-off shank of the bolt into the rectangular slot with the bottom face of the bracket protruding over the rim of the cover as shown.

Place the nut supplied onto the bolt and tighten with fingers.

Tighten with 22mm socket drive, open-ended spanner or similar, taking care not to over-tighten. (NOTE: The nut should be tightened enough to remove play but not inhibit lock assembly rotation.)



Above shows how the locking bracket swivels to engage underneath the retaining lip cast on the underside of the frame.

Shows how the lock is operated using a socket drive as a key, turning it 90° to the 'OPEN' and 'CLOSED' positions as appropriate.

Please note that the above installation instructions are guidelines only and the recommendations are given by us in good faith to assist in the correct installation of our products.