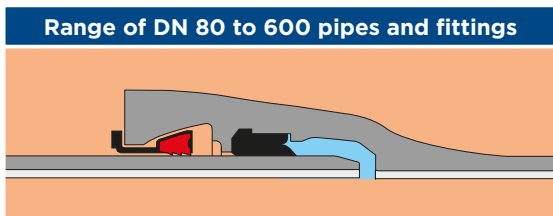


# UNIVERSAL Vi joint



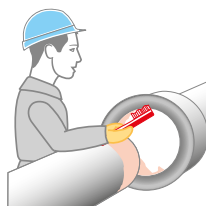
This joint requires the use of **UNIVERSAL STANDARD pipes** featuring a double chamber **socket** to receive the:

- **STANDARD gasket**, which ensures a watertight seal
- **UNIVERSAL Vi locking ring with inserts**; the inserts anchor the assembly during interlocking.

## 1 CLEAN

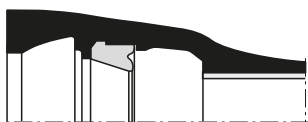
Carefully **clean** the inside of the socket, the spigot, the gasket and the locking ring.

**Keep** all parts clean until assembly has been completed.

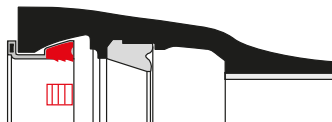


## 2 POSITION THE RINGS

The joint must be **perfectly aligned** during assembly.



STANDARD gasket

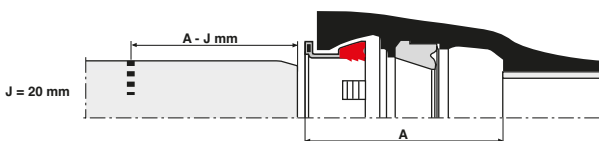


UNIVERSAL Vi locking ring with inserts

## 3 MARK THE INSERTION DEPTH

Mark the spigot if there is no original marking.

DN	A (mm)	DN	A (mm)	DN	A (mm)	DN	A (mm)
80	147	150	155	300	187	450	198
100	147	200	162	350	192	500	210
125	147	250	173	400	186	600	217

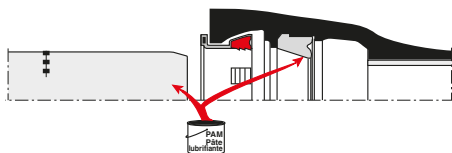


# UNIVERSAL Vi joint

## 4 LUBRICATE

Using the lubricant paste, **coat** the:

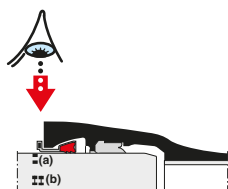
- **Exposed side** of the gasket
- **Chamfer and spigot**



## 5 ASSEMBLE

**Center** and **introduce** the spigot into the perfectly aligned socket:

- Up to the line corresponding to A-20 mm** in case of a cut pipe or standard spigot
- Between the two lines** if they are original markings on the Universal pipes



## 6 INFORMATION

### Angular deflection

#### Maximum admissible deflection:

DN	$\Delta \theta$ (°)	L m	$\Delta d$ (cm) for L
80 to 450	3°	5.95	32
500	2°	5.97	21
600	2°	5.97	21

