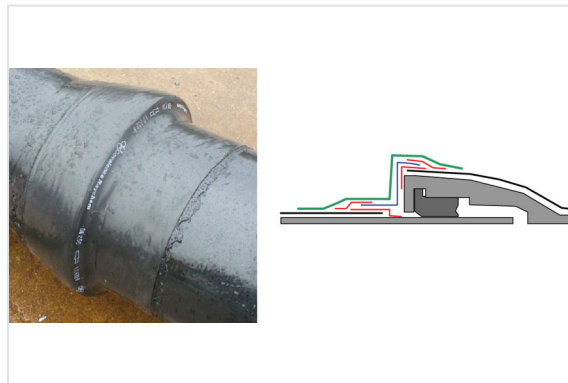


Assembly of the aluminium sleeve on TT pipes

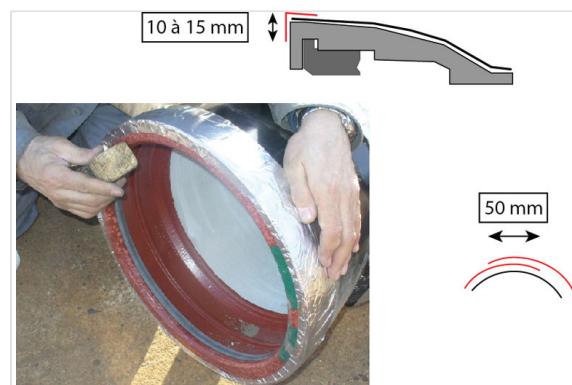
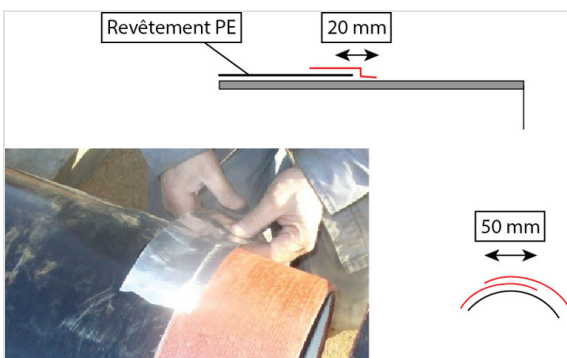


The installation must be done in a clean and dry environment.

Necessary equipment to install the aluminium sleeve

- Aluminium adhesive tape width 75mm
- Tool (in wood) for the completions
- Gas-burner

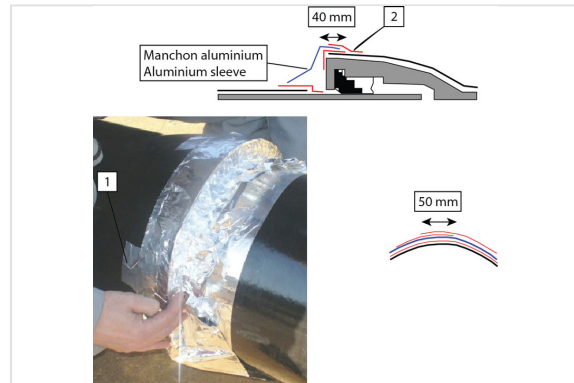
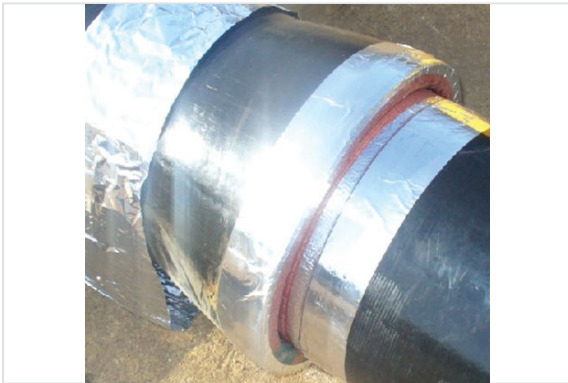
Assembling



1- To put in place an adhesive tape on all the circumference of the spigot between the PE coating and the ductile iron. To check that the pipe is clean and dry so that the aluminium adheres well. The adhesive tape shall cover all the circumference plus 50 mm mini.

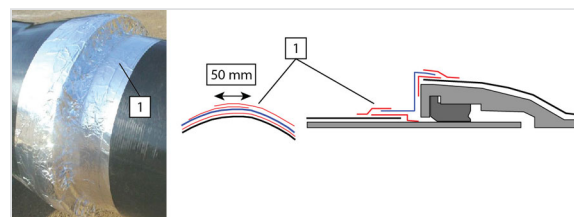
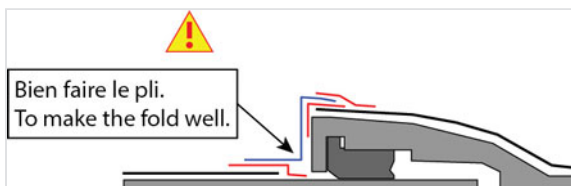
2- To put in place an adhesive tape on all the circumference of the socket between the PE coating and the ductile iron. To check that the pipe is clean and dry so that the aluminium adheres well. The adhesive tape shall cover

all the circumference plus 50 mm mini. To fold back the tape on the face of the socket and to smooth it with a tool (in wood).



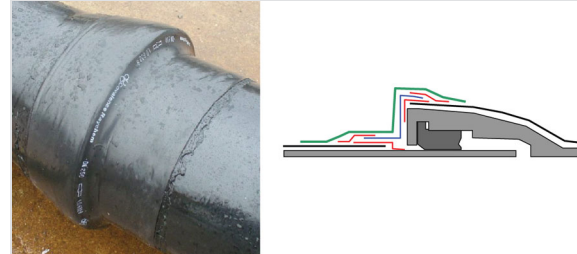
3- To check that the aluminium sleeve doesn't have tears. To put in place the heat-shrinkable tubular sleeve and the aluminium sleeve on the socket of the pipe. To lubricate the spigot, the joint and to joint the pipes.

4- To put in place the aluminium sleeve on the socket (surface of 40mm). The aluminium tape stuck on all the circumference of the socket must remain visible. To put in place pieces of aluminium adhesive tape around the sleeve (1) to position this one on the socket. To fold the aluminium sleeve so that it comes in contact with the socket. To put in place an aluminium adhesive tape between the sleeve and the PE (2). This one must cover all the circumference + 50mm mini.



5- To fold the aluminium sleeve so that it comes in contact with the face of the socket then with the barrel of the pipe. The aluminium sleeve must imperatively be plated in the angle between the face of the socket and the barrel of the pipe. To maintain the sleeve on the barrel with pieces of adhesive tape.

6- To put an aluminium strip between the aluminium sleeve and the barrel of the pipe (1). The aluminium strip shall cover all the circumference + 50mm mini.



7- To smooth the sleeve in order to reduce the folds to the maximum with a tool (in wood), with rounded angles and sliding well in order not to damage this sleeve.

8- To heat the junction with a soft flame to reach approximately 50°C. To install the heat-shrinkable tubular sleeve so that it covers completely the aluminium sleeve. To proceed to retraction by heating in a homogeneous way the circumference of the sleeve while starting with the central part then at the ends.

9- Before or after the installation, a small tear on the aluminium sleeve can be repaired with aluminium adhesive tape.

Important: when installing on an anchored joint, it is necessary to stress the junction before the laying of the anti-permeation sleeve. This also applies in the case of trenchless pipe laying.

The information on this sketch is, to the best of our knowledge correct at the time of printing. However Saint-Gobain are constantly looking at ways of improving their products and services therefore reserve the right to change without prior notice, any of the data shown. Any orders placed will be subject to our Standard Conditions of Sale, available on request.