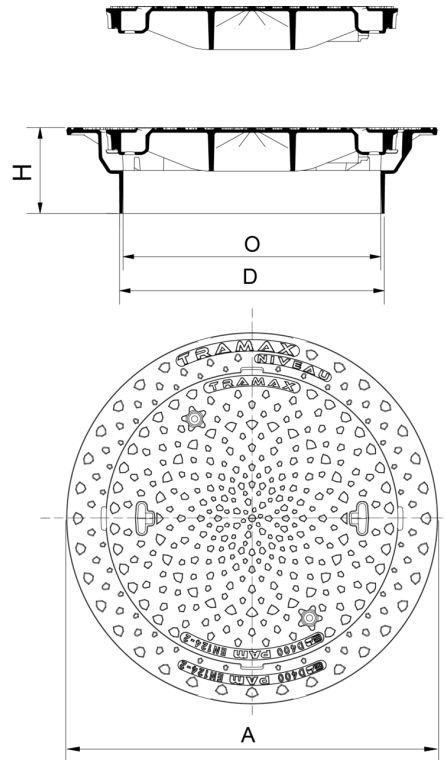


Manhole cover TRAMAX NIVEAU D400 class - Round frame - Non ventilated



A (mm)	D (mm)	O (mm)	H (mm)	Total Mass (kg)	Cover mass (kg)	Packaging	References
865	617	600	200	87.00	44.1	5	CDTM60QG



Last Update 08/06/2026
Visit website for latest version



Material and coating

- Frame and cover in Ductile Iron EN GJS 400-15: water base coating
- [Ring in elastomer](#)

Field of application:

- D400 class (Group 4) according to standard DIN EN 124-2, carriageways of roads, hard shoulders and parking areas for all types of road vehicles.
- Heavy traffic zones and frequent visits.

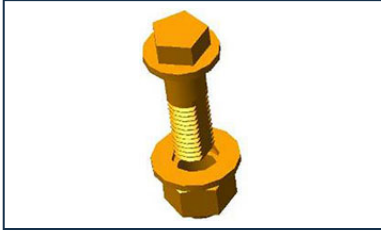
Main characteristics:

- Frame can be rolled in, levelling range 140 mm to 180 mm
- For flush installation in bituminous road surfaces and decoupling of manhole cover and manhole structure
- Compatible with mudpan in accordance with DIN 1221
- Compatible with concrete levelling rings in accordance with DIN 4034
- Compatible with covers in accordance with DIN 19584
- Maximised contact area of the flange frame to reduce contact pressure
- 4-part cushioning insert made of SBR
- Cover with non-slip surface and 2 snap fasteners
- Ergonomic multi-tool opening pocket
- Available with SW, RW or WASSER lettering
- Cover top surface up to 80% customisable
- Can be locked retrospectively

Accessories

- Pentagonal or SCS locks (C36)
- TRAMAX NIVEAU auxiliary formwork (C70)
- TRAMAX insert kit (C71)

Accessories



1/4 turn locks

The information on this sketch is, to the best of our knowledge correct at the time of printing. However Saint-Gobain are constantly looking at ways of improving their products and services therefore reserve the right to change without prior notice, any of the data shown. Any orders placed will be subject to our Standard Conditions of Sale, available on request.