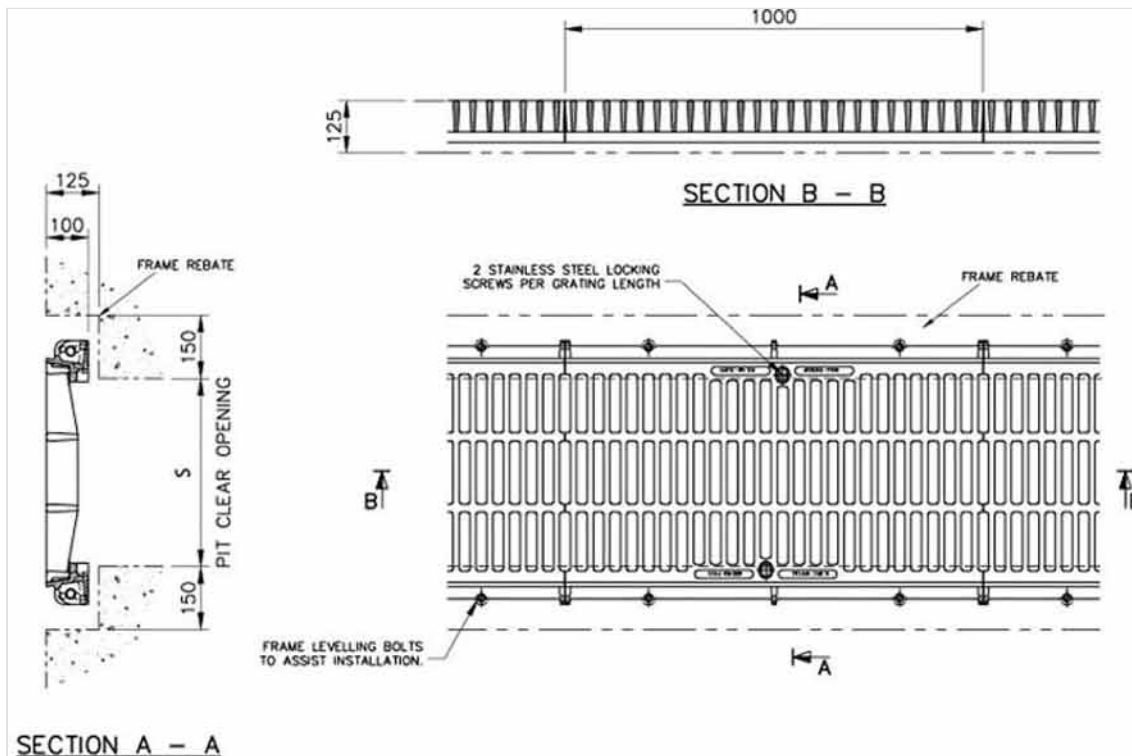


## GATIC Grating on 2 T Section Frame - F900 class - Assembly on channels



Version	Width (mm)	Length (mm)	H (mm)	Waterway area	Mass (kg)
Grating + 2 T section frame	300	1000	100	18.13 dm <sup>2</sup>	91
End plate				-	3.7
Grating + 2 T section frame	450	1000	100	26.29 dm <sup>2</sup>	121
End plate				-	4.9
Grating + 2 T section frame	600	1000	100	34.45 dm <sup>2</sup>	165
End plate				-	6.1
Grating + 2 T section frame	750	1000	100	43.29 dm <sup>2</sup>	216
End plate				-	7.3
Grating + 2 T section frame	810	1000	100	44.66 dm <sup>2</sup>	262
End plate				-	7.7

Important: gratings delivered in the frame of large projects: minimum quantities 100 pieces per type



### Material and coating:

- Grating and frame in Ductile Iron: bituminous varnish

### Field of application:

- F900 class (Group 6) according to standard EN124-2, areas imposing particularly high wheel loads, such as aircraft pavements, etc...

### Main characteristics:

- Machined and greased bearing surfaces.
- Adjusting screw for levelling of the frame.
- Locked gratings on their T section frame.
- Accessories of handling: Set of keys D17, [D18](#) or [D20](#) reference.

