

“Y” Type Strainer



All “Y” type strainer valves offered by SAINT-GOBAIN PAM are designed:

- To protect all downstream installed valves by retaining all debris which could be conveyed by the fluid inside the water distribution pipeline.
- To get the best hydraulic working conditions and also an efficient protection in the water distribution system due to its “Y” body shape and the filtering cartridge position.

Range

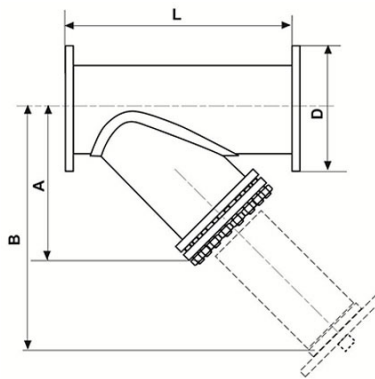
- From DN350 to DN700.
- Designed for a pressure rating of 16 bars.
- Flanges drilling connection in accordance with (to be stated when ordering):

ISO 7005 - 2 table 9 ISO PN 16 = BS 4504 section 3.2 table 11 - C2 PN16 = DIN 2501 PN16

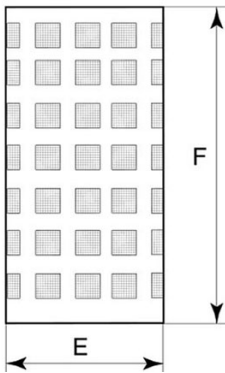
ISO 7005 - 2 table 8 ISO PN 10 = BS 4504 section 3.2 table 10 - C2 PN10 = DIN 2501 PN10

DN (mm)	PN	L (mm)	D (mm)	A (mm)	B (mm)	Mass (kg)	References
350	10	980	505	590	1060	203.00	RCB35QABHL
350	16	980	520	590	1060	234.00	RCB35QAAHL
400	10	1100	565	670	1195	275.00	RCB40QABHL
400	16	1100	580	670	1195	313.00	RCB40QAAHL
450	10	1200	615	740	1320	341.00	RCB45QABHL
450	16	1200	640	740	1320	393.00	RCB45QAAHL
500	10	1250	670	800	1425	400.00	RCB50QABHL
500	16	1250	715	800	1425	475.00	RCB50QAAHL
600	10	1450	780	935	1665	541.00	RCB60QABHL

DN (mm)	PN	L (mm)	D (mm)	A (mm)	B (mm)	Mass (kg)	References
600	16	1450	840	935	1665	711.00	RCB60QAAHL
700	10	1650	895	1080	1920	774.00	RCB70QABHL
700	16	1650	910	1080	1920	912.00	RCB70QAAHL



Filtering Cartridge material

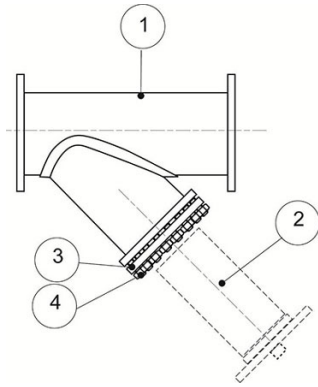


The filtering element is a meshed screen of size 2 mm, supported inside of a 1mm thickness cylindrical metal sheet of with square aperture area of section 10mmx10mm.

DN	E	F
mm	mm	mm
350	306	592
400	341	672
450	386	742

DN	E	F
mm	mm	mm
500	431	802
600	525	952
700	620	1092

Material and coating



Item	Description	Material	Coating
1	Body	Steel EN 10025 S235JR	Epoxy 250 microns
2	Filtering element	Steel type Z6 CN 18-9	
3	Lid fitted with a drain plug of size ½ inch	Steel EN 10025 S235JR	Epoxy 250 microns
4	Screws and bolts	Steel EN 10025 Grade 6/8	Zinc coated

Hydraulic characteristics

Headloss calculation

With “Kv” flow coefficient it is possible to determinate the headloss inside the filter by application of the hereunder stated formula:

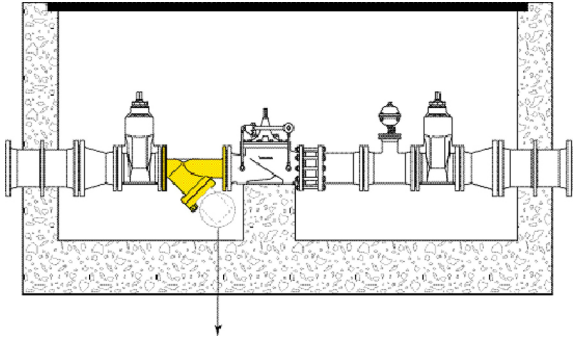
$$\Delta P = \frac{Q^2}{Kv^2}$$

with ΔP = headloss in bar, Q = flow rate in m^3 /hour, K_v = flow coefficient in m^3 /hour

Headloss with new filter

DN	350	400	450	500	600	700
K_v	1790	2341	2961	3661	5275	7184

Installation



The double flanged "Y" type strainer valve must be installed on the upstream side of the valve to be protected.

When valve installing instructions :

- On valve body an arrow indicating the water way circulation inside the filtering cartridge.
- The filtering cartridge must be placed at the bottom position for cleaning and drainage

Typical installation of "Y" type strainer valve

Attention: Before the "Y" type strainer valve installation in valve chamber, take care to get enough space in order to take off the filtering cartridge for maintenance

Maintenance

The filtering cartridge must be regularly inspected and cleaned.

After each damage on the main, systematically it must be inspected and cleaned out of all debris. Take care when pipeline washing operation does not damage the filter cartridge.

After the filtering cartridge removal and in order to get a perfectly compression of the sealing gasket between the valve body and the lid, it is recommended to screw on bolting one to one opposite side .

The filtering cartridge and its sealing gasket are such as spare parts

The information on this sketch is, to the best of our knowledge correct at the time of printing. However Saint-Gobain are constantly looking at ways of improving their products and services therefore reserve the right to change without prior notice, any of the data shown. Any orders placed will be subject to our Standard Conditions of Sale, available on request.