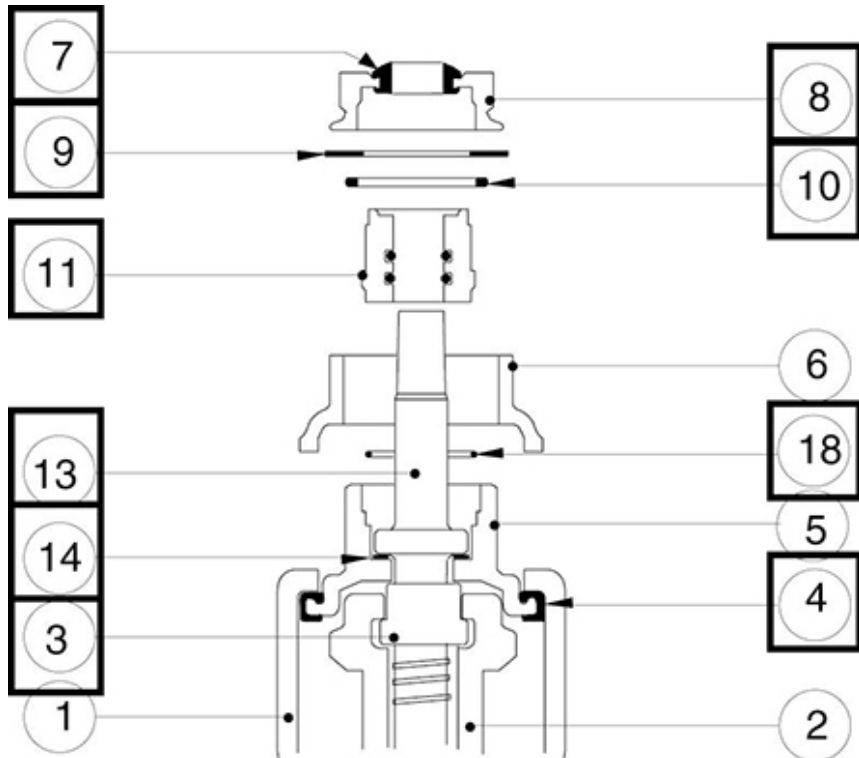


## Spare parts for EURO20 NG - Operating system complete replacement



- Close upstream and downstream isolation valves for close the water main.
- Disassembly various accessories installed on the valve.
- Shutting the E20 valve totally.
- Loose the bearing nut 8 with the key recommended on the technical data sheet spare parts, and to entirely unscrew it.
- Remove the lock washer 9, the O’ring 10 and the Yoke 6
- Open the valve of a quarter of turn
- Unscrew the sealing bush 11 (make sure that the operating stem 13 does not turn )
- Unscrew and remove the operating stem 13
- After that the bonnet 5 falls on the gate 2.
- Extract the bonnet 5 from the body: for that make it swivel vertically on 90°, then to upwards draw it by one from its ends (see data sheet R1 635)
- Remove body bonnet gasket 4 enclosed on the circumference of the bonnet 5
- Install the new gasket 4 on the bonnet 5.
- Remove the O’ ring 18. Remove the lock washer 14.
- Release the operating nut 3 of the gate 2.
- Install the operating nut 3 on the gate 2.
- Lubricate the new operating 13 with lubricating paste compatible with drinking water.

- Verify the good state of the elastomer gate 2.
- Proceed in direction reverses for the reassembly, and immobilize the lock washer 9 by a blow of punch at the level of the notch envisaged on the yoke 6.
- Test the tightness and the correct operation of the operating system.

*The information on this sketch is, to the best of our knowledge correct at the time of printing. However Saint-Gobain are constantly looking at ways of improving their products and services therefore reserve the right to change without prior notice, any of the data shown. Any orders placed will be subject to our Standard Conditions of Sale, available on request.*