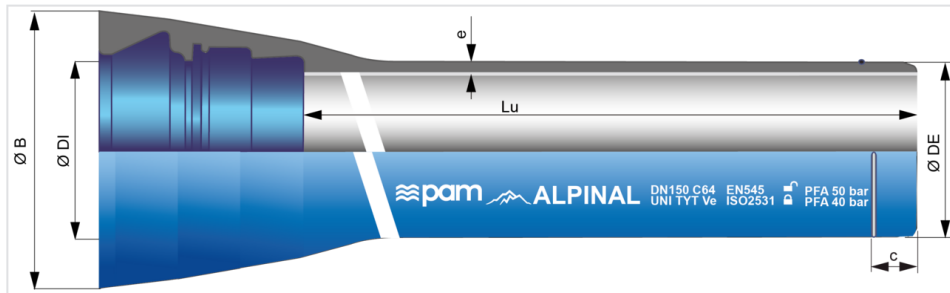


ALPINAL Blue pipes DN80 to 300 with UNIVERSAL TYTON socket + Weld bead Ve



DN	Lu (m)	Class	e (mm)	ØDE (mm)	ØDI (mm)	P (mm)	ØB (mm)	Bead position c (mm)	NV	V	Mass (kg/m)	References
80	5.97	C100	6.1	98	100.5	143	158	85	100 bar	100 bar	15.78	AKA80B60ADB
100	5.97	C100	6.1	118	120.5	140	188	90	100 bar	85 bar	19.60	AKB10B60ADB
100	5.97	C145	7.2	118	120.5	140	188	90	145 bar	100 bar	21.90	AKB10Y60ADB
125	5.97	C64	6.1	144	146.5	139.9	203	95	64 bar	63 bar	24.30	AKB12C60ADB
125	5.97	C100	7.5	144	146.5	139.9	203	95	100 bar	100 bar	28.00	AKB12B60ADB
150	5.97	C64	6.2	170	172.5	148	230	95	64 bar	63 bar	29.10	AKB15C60ADB
150	5.97	C100	7.8	170	172.5	148	230	95	100 bar	100 bar	34.53	AKB15B60ADB
200	5.97	C64	6.5	222	224.5	155	290	100	64 bar	63 bar	40.15	AKB20C60ADB
200	5.97	C100	9.2	222	224.5	155	290	100	100 bar	100 bar	52.33	AKB20B60ADB
250	5.97	C50	6.8	274	276.5	166	350	100	50 bar	50 bar	52.50	AKB25D60ADB
250	5.97	C85	9.7	274	276.5	166	350	110	85 bar	78 bar	68.87	AKB25R60ADB
250	5.97	C100	11.1	274	276.5	166	350	110	100 bar	100 bar	77.31	AKB25B60ADB
300	5.97	C50	7.4	326	328.5	180	408	115	50 bar	41 bar	67.26	AKB30D60ADB
300	5.97	C75	10.1	326	328.5	180	408	115	75 bar	70 bar	85.54	AKB30P60ADB
300	5.97	C85	11.2	326	328.5	180	408	115	85 bar	80 bar	94.50	AKB30R60ADB
300	5.97	C100	12.9	326	328.5	180	408	115	100 bar	100 bar	105.77	AKB30B60ADB

Legend:



NV



V

- DN: nominal diameter

- Lu: laying length, in m
- Class: pressure class according to EN 545 and ISO 2531
- e: nominal thickness according to ISO 2531, in mm
- ØDE: external nominal diameter of the barrel according to EN 545 and ISO 2531, in mm
- ØDI: internal nominal diameter of the socket, in mm
- P: nominal depth of the socket, in mm
- ØB: nominal diameter of the socket, in mm
- c: weld bead position, in mm
- Mass: total mass per metre (including cement coating and socket), determined with the nominal thickness, in kg/m
- PFA: allowable operating pressure, in bar
NV When pipe is not anchored (only with gasket) - V when pipe is anchored (with gasket and anchoring system)
- Reference: commercial reference Saint-Gobain PAM

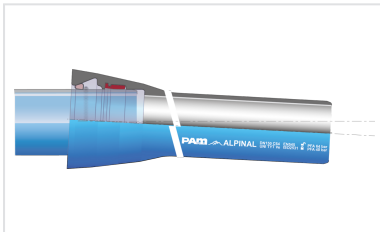
Field of use:

- For connecting and water supply of snow guns
- Working networks under very high pressures

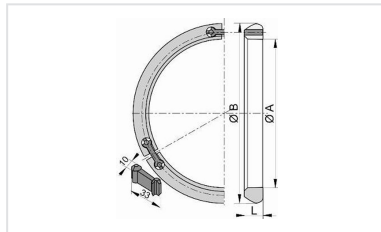
Main characteristics:

- Internal lining : spun mortar cement
- External coating: a layer of zinc-aluminium 85/15 alloy with a minimum surface density of 400g/m²), applied by spraying molten metal onto the surface of the iron, using an electric arc spray gun, from ZnAl (Cu) alloy wire and a protective layer of Aquacoat (semi-permeable), a water-based blue acrylic of average thickness 80 microns applied using a spray gun
- The pipes are supplied with a plug at each end up to DN300 included
- Thickness of ductile iron adapted to the pressure
- Elastomer of quality EPDM
- Class : pressure class according to EN 545 and ISO 2531

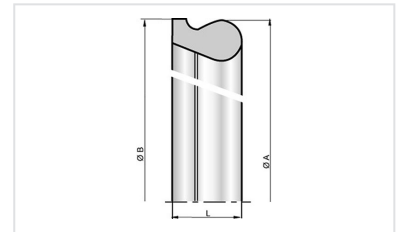
Linked products



Kit Universal Tyton Ve
 ALPINAL Pipe + Universal
 Tyton Ve Joint



Locking Ring for UNI Ve
 joint DN80-1800



TYT Gasket for TYT Pipes
 and Fittings DN80-300



Lubricating paste -
 BLUPAM



Lubricating paste -
 NATURAL, INTEGRAL, and
 PLUVIAL ranges

The information on this sketch is, to the best of our knowledge correct at the time of printing. However Saint-Gobain are constantly looking at ways of improving their products and services therefore reserve the right to change without prior notice, any of the data shown. Any orders placed will be subject to our Standard Conditions of Sale, available on request.