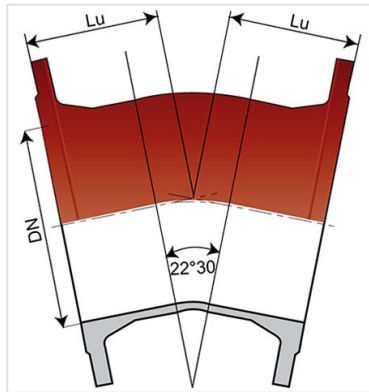


Bend 22°30 (1/16) INTEGRAL with 2 Fixed Flanges



Angle	DN (mm)	Lu (mm)	PN 10		PN 16		PN 25	
			Mass (kg)	References	Mass (kg)	References	Mass (kg)	References
22°30	80	100	11.00	BBA80CD10FF	11.00	BBA80CD10FF	11.00	BBA80CD10FF
22°30	100	110	11.60	BBB10CD10FF	11.60	BBB10CD10FF		
22°30	150	109	17.80	BBB15CD10FF	17.80	BBB15CD10FF		
22°30	200	138			27.50	BBB20CD20FF		
22°30	250	190			43.50	BBB25CD20FF		
22°30	300	210			54.40	BBB30CD20FF		
22°30	350	210			83.00	BBB35CD20FF		
22°30	400	239			107.00	BBB40CD20FF		
22°30	450	349			135.00	BBB45CD20FF		
22°30	500	375			176.00	BBB50CD20FF		
22°30	600	426			267.00	BBB60CD20FF		
22°30	700	300	261.00	BBB70CD10FF	258.00	BBB70CD20FF		
22°30	800	335	340.00	BBB80CD10FF	336.00	BBB80CD20FF		
22°30	900	375	442.00	BBB90CD10FF	437.00	BBB90CD20FF		
22°30	1000	410	587.00	BBC10CD10FF				
22°30	1200	467.5	905.00	BBC12CD10FF	1018.00	BBC12CD20FF		
22°30	1400	524	1220.00	BBC14CD10FF	1324.00	BBC14CD20FF		
22°30	1500	524			1501.00	BBC15CD20FF		

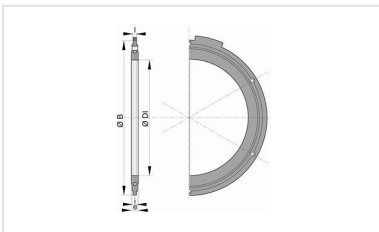
Field of use:

- Separate sewer system and combined sewer system
- Application: gravity flow and rising main sewerage systems
- Type of effluent: domestic wastewater and rainwater
- For networks with rising main under pressure
- For effluents between pH1 and pH13

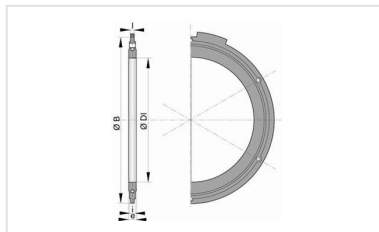
Main characteristics:

- External and internal coating: red epoxy powder 250µm (PECR)
- EN 598 / CE Marking
- Declaration of performances [DoP-INTEGRAL005EN](#)
- Designed according to the regulatory texts:
 - NF EN 476: general prescriptions for components used in the networks
 - NF EN 752: Conception of sewage projects
 - NF EN 1610: Reception of the works
 - CCTG: Fascicule 70 (sewage work)

Linked products



Flanged joint with hot galvanized steel bolts, nuts and washers for sewage



Flanged joint with hot galvanized steel bolts, nuts and washers

The information on this sketch is, to the best of our knowledge correct at the time of printing. However Saint-Gobain are constantly looking at ways of improving their products and services therefore reserve the right to change without prior notice, any of the data shown. Any orders placed will be subject to our Standard Conditions of Sale, available on request.