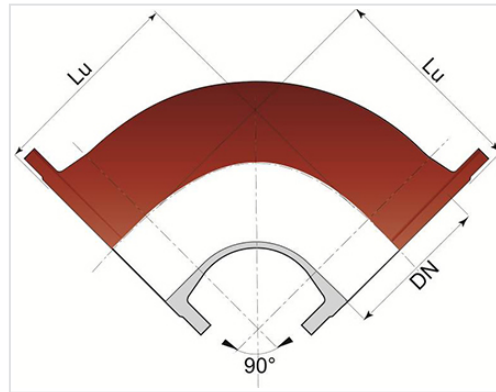


Bend 90° (1/4) INTEGRAL with 2 Fixed Flanges



Angle	DN (mm)	Lu (mm)	PN 10		PN 16		PN 25	
			Mass (kg)	References	Mass (kg)	References	Mass (kg)	References
90°	80	165	9.70	BBA80CA10FF	9.70	BBA80CA10FF	9.70	BBA80CA10FF
90°	100	180	11.90	BBB10CA10FF	11.90	BBB10CA10FF		
90°	150	220	20.00	BBB15CA10FF	20.00	BBB15CA10FF		
90°	200	260			30.50	BBB20CA20FF		
90°	250	350			49.00	BBB25CA20FF		
90°	300	400			69.50	BBB30CA20FF		
90°	350	450			96.00	BBB35CA20FF		
90°	400	500			121.00	BBB40CA20FF		
90°	450	550			221.00	BBB45CA20FF		
90°	500	600			287.00	BBB50CA20FF		
90°	600	700			431.00	BBB60CA20FF		
90°	700	800	564.00	BBB70CA10FF	561.00	BBB70CA20FF		
90°	800	900	782.00	BBB80CA10FF	778.00	BBB80CA20FF		
90°	900	1000	1030.00	BBB90CA10FF	1025.00	BBB90CA20FF		
90°	1000	1100	1354.00	BBC10CA10FF	1348.00	BBC10CA20FF		
90°	1200	1355	2552.00	BBC12CA10FF	2625.00	BBC12CA20FF		

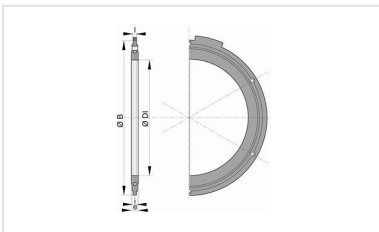
Field of use:

- Separate sewer system and combined sewer system
- Application: gravity flow and rising main sewerage systems
- Type of effluent: domestic wastewater and rainwater
- For networks with rising main under pressure
- For effluents between pH1 and pH13

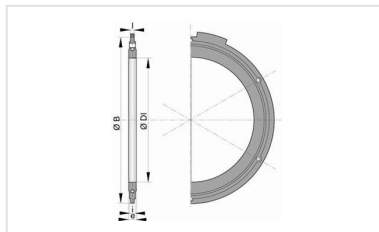
Main characteristics:

- External and internal coating: red epoxy powder 250µm (PECR)
- EN 598 / CE Marking
- Declaration of performances [DoP-INTEGRAL005EN](#)
- Designed according to the regulatory texts:
 - NF EN 476: general prescriptions for components used in the networks
 - NF EN 752: Conception of sewage projects
 - NF EN 1610: Reception of the works
 - CCTG: Fascicule 70 (sewage work)

Linked products



Flanged joint with hot galvanized steel bolts, nuts and washers for sewage



Flanged joint with hot galvanized steel bolts, nuts and washers

The information on this sketch is, to the best of our knowledge correct at the time of printing. However Saint-Gobain are constantly looking at ways of improving their products and services therefore reserve the right to change without prior notice, any of the data shown. Any orders placed will be subject to our Standard Conditions of Sale, available on request.