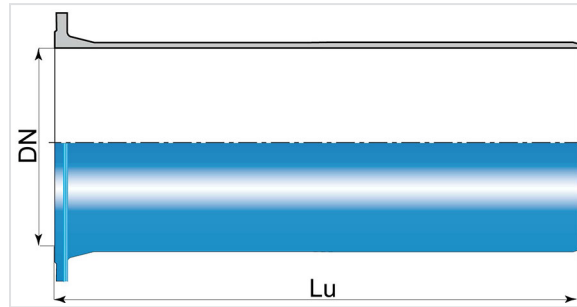


Cast Flange Spigot piece



DN	Lu (mm)	PN 10		PN 16		PN 25	
		Mass (kg)	References	Mass (kg)	References	Mass (kg)	References
250	1000	82.00	BBB25MB1CTT	83.00	BBB25MB2CTT		
300	1500			152.00	BBB30MB2DTT		
400	1500	233.00	BBB40MB1DTT				
400	1000			157.60	BBB40MB2CTT		
450	1000			171.00	BBB45MB2CTT		
500	1000			205.00	BBB50MB2CTT		
600	1000			315.00	BBB60MB2CTT		
700	1000			400.00	BBB70MB2CTT		
800	1000			482.00	BBB80MB2CTT	546.00	BBB80MB3CTT
800	2000			905.70	BBB80MB2ETT	969.00	BBB80MB3ETT
800	3000			1346.00	BBB80MB2GTT		
900	1000			618.00	BBB90MB2CTT		
1200	2000	1590.00	BBC12MB1ETT				
1400	1000			986.00	BBC14MB2CTT		
1400	2000			1746.00	BBC14MB2ETT		

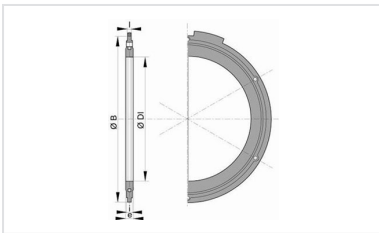
Field of use:

- For drinking water networks

Main characteristics:

- External and internal coating : Blue epoxy powder 250 microns average thickness with a minimum of 200 microns, conforming to EN 14901 (PECB)
- In conformity with EN 545:2010 and ISO 2531:2009

Linked products



Flanged joint with hot galvanized steel bolts, nuts and washers

The information on this sketch is, to the best of our knowledge correct at the time of printing. However Saint-Gobain are constantly looking at ways of improving their products and services therefore reserve the right to change without prior notice, any of the data shown. Any orders placed will be subject to our Standard Conditions of Sale, available on request.