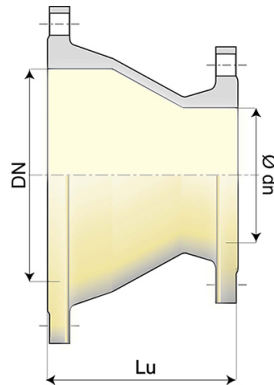


Taper PUR PUX with 2 Fixed Flanges



			PN 10	
DN (mm)	Ødn (mm)	Lu (mm)	Mass (kg)	References
1200	1000	860	656.00	BBC12VE1VUU
1400	1200	760	846.00	BBC14VE1BUU
1600	1200	1085	1194.00	BBC16VE1BUU
1600	1400	890	1259.00	BBC16VE1CUU
1800	1200	1445	1822.00	BBC18VE1BUU
1800	1400	1250	1798.00	BBC18VE1CUU
2000	1600	1350	2440.00	BBC20VE1EUU

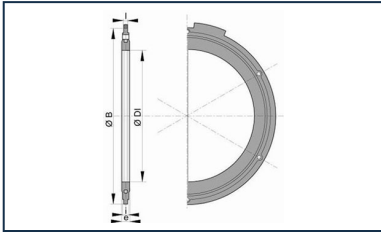
Field of use:

- Aggressive or soft waters
- For high corrosive soils, industrial pollution zones

Main characteristics:

- Internal-external coating : polyurethane coating in accordance with Standard EN 15655
- In conformity with EN 545:2010 and ISO 2531:2009

Linked products



Flanged joint with hot
galvanized steel bolts,
nuts and washers

The information on this sketch is, to the best of our knowledge correct at the time of printing. However Saint-Gobain are constantly looking at ways of improving their products and services therefore reserve the right to change without prior notice, any of the data shown. Any orders placed will be subject to our Standard Conditions of Sale, available on request.