

EURO 20 Type 21 motorizable and motorized - Sewage Version



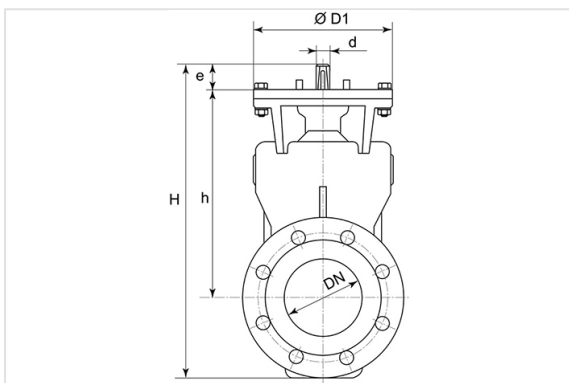
The EURO 20 type 21:

- is composed of flanges with standard face to face dimensions
- type NG : DN65-300

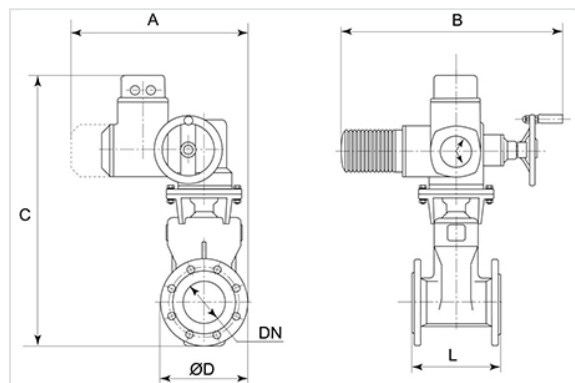
DN (mm)	Version	H (mm)	h (mm)	e (mm)	PN 10 Mass (kg)	References
200	Motorizable - Adaptor F14 / Ø305 / 4 holes 15 on Ø140	695	480	45	85.00 kg	175915
250	Motorizable - Adaptor F14 / Ø305 / 4 holes 15 on Ø140	815	570	45	129.00 kg	175939
300	Motorizable - Adaptor F14 / Ø305 / 4 holes 15 on Ø140	940	655	57	173.00 kg	175940

(*) please contact us

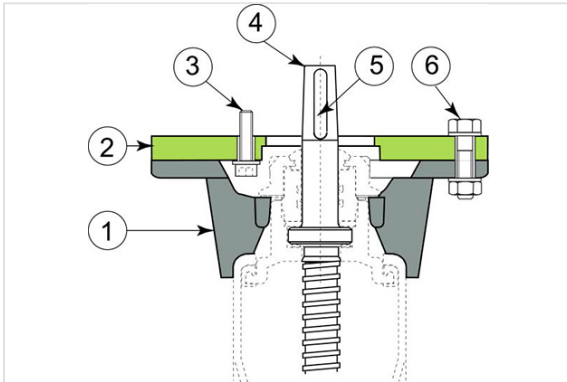
Motorizable version



Motorized version

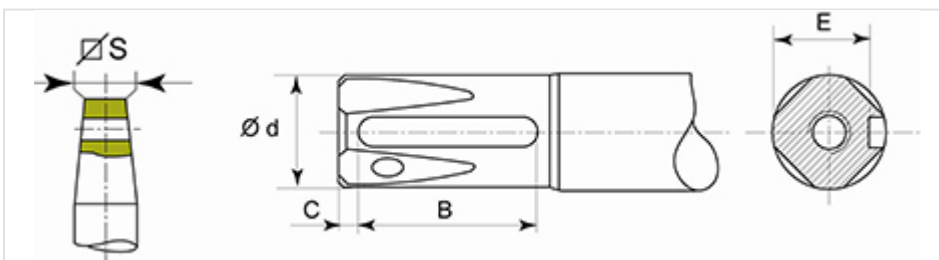


Material and coating



Item	Designation	Material	Coating
1	Yoke - Flange	Ductile iron	Epoxy 250 microns
2	Adaptor	Carbon steel	Epoxy 250 microns
3	4 bolts CHC M10/30, 4 washers M10 / 2	Steel	Zinc plated
4	CC operating stem	Stainless steel	
5	Key	Steel	
6	4 bolts H 10/45, 8 washers M10 / 2	Steel	Zinc plated

Detail of key dimensions of the operating stem (CC)



DN mm	Square S mm	d mm	B mm	C mm	E mm	Key mm
65	17.3	20 f 8	28	4	16.5	6 x 6 x 28
80	17.3	20 f 8	28	4	16.5	6 x 6 x 28
100	19.3	22 f 8	36	4	18.5	6 x 6 x 36
125	19.3	22 f 8	36	4	18.5	6 x 6 x 36
150	19.3	22 f 8	36	4	18.5	6 x 6 x 36
200	24.3	28 f 8	45	5	20.0	8 x 7 x 45
250	27.3	32 f 8	50	5	27.0	10 x 8 x 50

DN	Square S	d	B	C	E	Key
mm	mm	mm	mm	mm	mm	mm
300	27.3	32 f 8	50	5	27.0	10 x 8 x 50

Choice of the servomotor: values in Nm

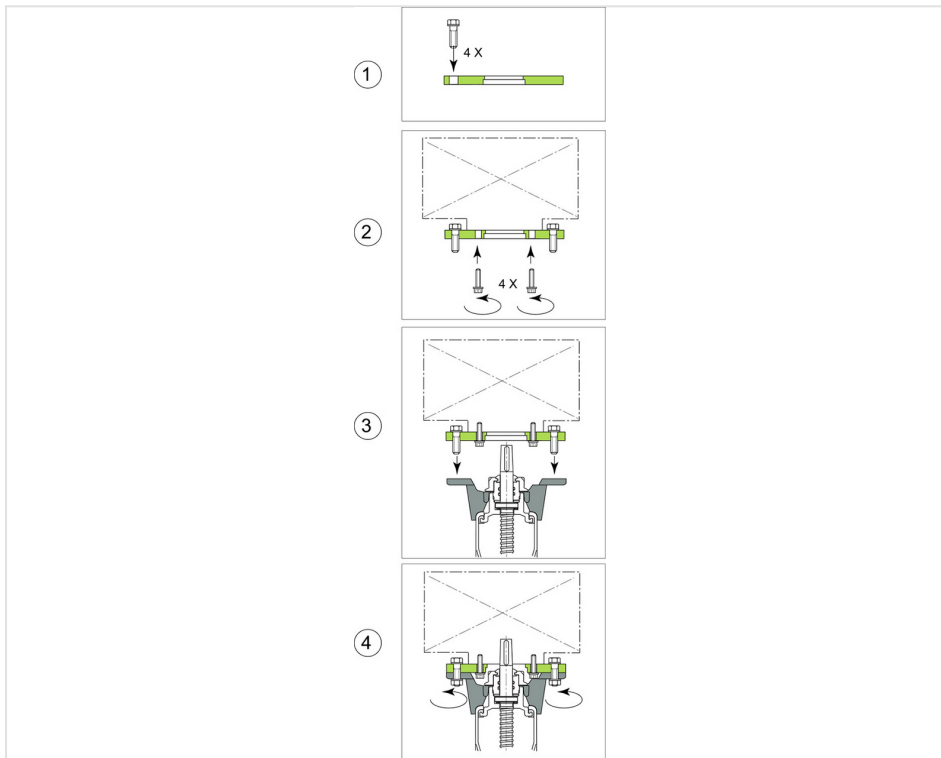
DN	Nominal torque	Setting the torque switch valve closing	
		Initial torque in factory	Maxi torque
65	40	50	60
80	40	50	60
100	60	80	100
125	60	80	100
150	70	95	120
200	170	200	250
250	200	250	300
300	250	300	400

The nominal torque of the motor must be equal or greater than the maximum setting of the torque switch.

Closing the valve: motor stops through torque switch. Limit switch on security.

Opening the valve: motor stops through limit switch. Torque switch on security.

Assembly of the motor



1. Put the 4 bolts H
2. Assemble the adaptor on the motor with the 4 CHC bolts
3. Assemble the motor/adaptor on top of the operating stem of the valve
4. Tighten the bolts.

The information on this sketch is, to the best of our knowledge correct at the time of printing. However Saint-Gobain are constantly looking at ways of improving their products and services therefore reserve the right to change without prior notice, any of the data shown. Any orders placed will be subject to our Standard Conditions of Sale, available on request.