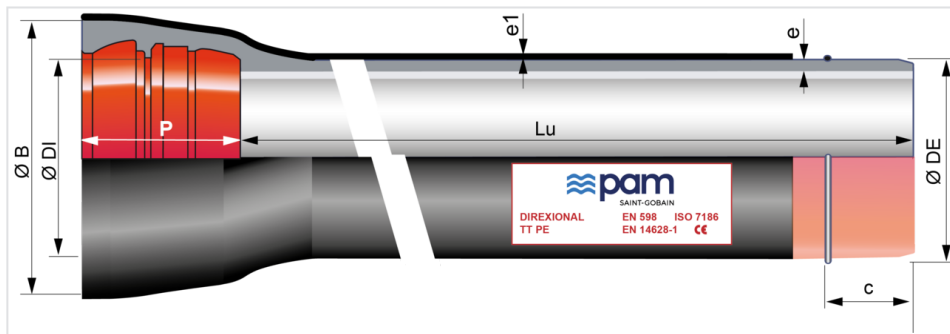


## DIREXIONAL INT TT PE pipes DN150 to 700 with UNIVERSAL STANDARD socket + Weld bead Ve



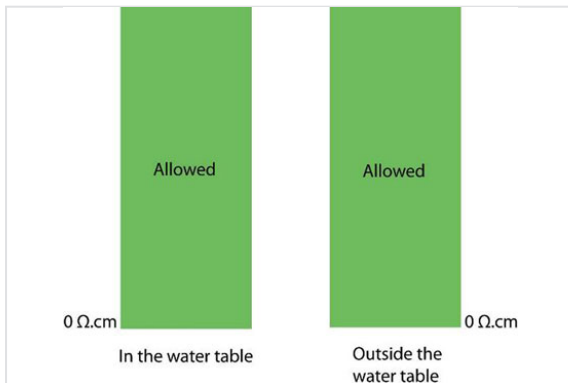
DN	Lu (m)	e (mm)	e1 (mm)	ØDE (mm)	ØDI (mm)	P (mm)	ØB (mm)	Bead position c (mm)	Mass (kg/m)	PFA	References
150	5.97	6.2	2	170	173.4	148	230	95	29.90	60 bar	TIB15N60BG
200	5.97	6.5	2	222	225.2	155	290	100	41.30	52 bar	TIB20N60BG
250	5.97	6.8	2	274	276.8	166	350	110	53.80	46 bar	TIB25N60BG
300	5.97	7.4	2.2	326	328.8	180	408	115	69.50	41 bar	TIB30N60BG
350	5.97	7.7	2.2	378	380.9	184	463	115	85.90	38 bar	TIB35N60BG
400	5.97	8.1	2.2	429	431.9	176	510	113	100.90	35 bar	TIB40N60BG
450	5.97	8.6	2.2	480	483	190	570	120	120.40	32 bar	TIB45N60BG
500	5.97	9.3	2.5	532	535	200	625	125	143.00	30 bar	TIB50N60BG
600	5.97	10.9	2.5	635	638.2	209	740	135	192.90	30 bar	TIB60N60BG
700	5.97	10.8	2.5	738	741.7	250	855	158	234.90	27 bar	TIB70N60BG

### Legend

- DN: nominal diameter
- Lu: laying length, in m
- e: nominal thickness according to EN 598 + A1-2009, in mm
- e1: according to EN14628-2006, in mm
- ØDE: external nominal diameter of the barrel, in mm
- ØDI: internal nominal diameter of the socket, in mm
- P: nominal depth of the socket, in mm
- ØB: nominal diameter of the socket, in mm
- c: weld bead position, in mm
- Mass: total mass per meter (including cement coating and socket), determined with the nominal thickness, in kg/m

- Reference: commercial reference Saint-Gobain PAM

### Field of use:



- Separate sewer system and combined sewer system
- Application: rising main sewerage systems and trenchless pipe laying
- Type of effluent: domestic wastewater and rainwater
- Perfectly watertight
- For effluents between pH4 and pH12
- Extremely corrosive soils
- Protection of the joints with elastomer collar (DN100-300 - DN350-700 - DN800-1000) and HDD metal cones
- Adapted for trenchless pipe laying (horizontal direction drilling and pipe bursting)
- Resistivity of the soils: please refer to drawing

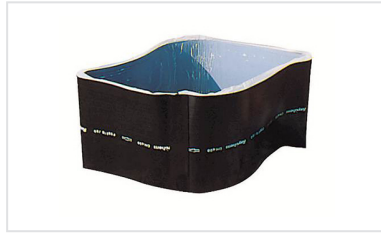
### Main characteristics:

- Elastomer quality: NBR
- External coating:
  - on the barrel: zinc 200 g/m<sup>2</sup> + polyethylene according to NF EN 14628-2006,
  - on the spigot: zinc rich paint 40 µm + red epoxy 200 µm
- Internal coating: aluminous cement mortar CALCOAT
- Conformity to EN 598 and ISO 7186

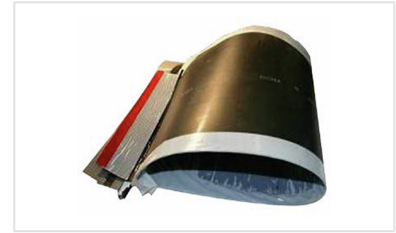
## Accessories



Elastomer Sleeve TT PE -  
Protection of joints of pipes  
and fittings DN60 to 300



Heat-shrink Collar for TT PE  
Standard and Universal



Heat-shrink Collar for TT PE  
Standard et Universal - Roll



HDD metal protection cone  
for DIREXIONAL Universal  
Ve pipes

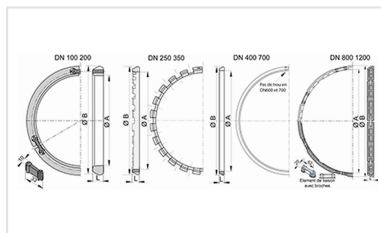


Pulling head for horizontal  
directional drilling

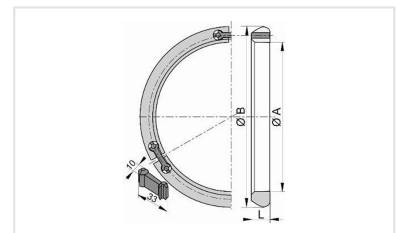
## Linked products



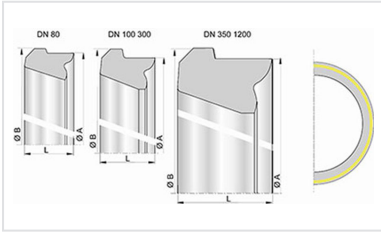
Kit Universal Standard Ve  
DIREXIONAL Pipe TT PE +  
Universal Standard Ve Joint



UNI STD Ve joint for  
INTEGRAL® Pipes and  
Fittings DN100-1600



Locking Ring for UNI Ve  
joint DN80-1800



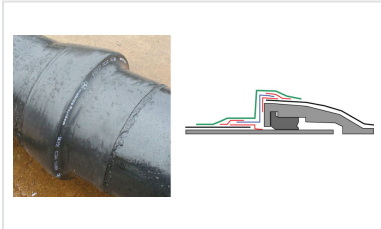
Nitrile STD Gasket  
DN80-2000



Lubricating paste -  
BLUPAM



Lubricating paste -  
NATURAL, INTEGRAL, and  
PLUVIAL ranges



Assembly of the aluminium  
sleeve on TT pipes

*The information on this sketch is, to the best of our knowledge correct at the time of printing. However Saint-Gobain are constantly looking at ways of improving their products and services therefore reserve the right to change without prior notice, any of the data shown. Any orders placed will be subject to our Standard Conditions of Sale, available on request.*