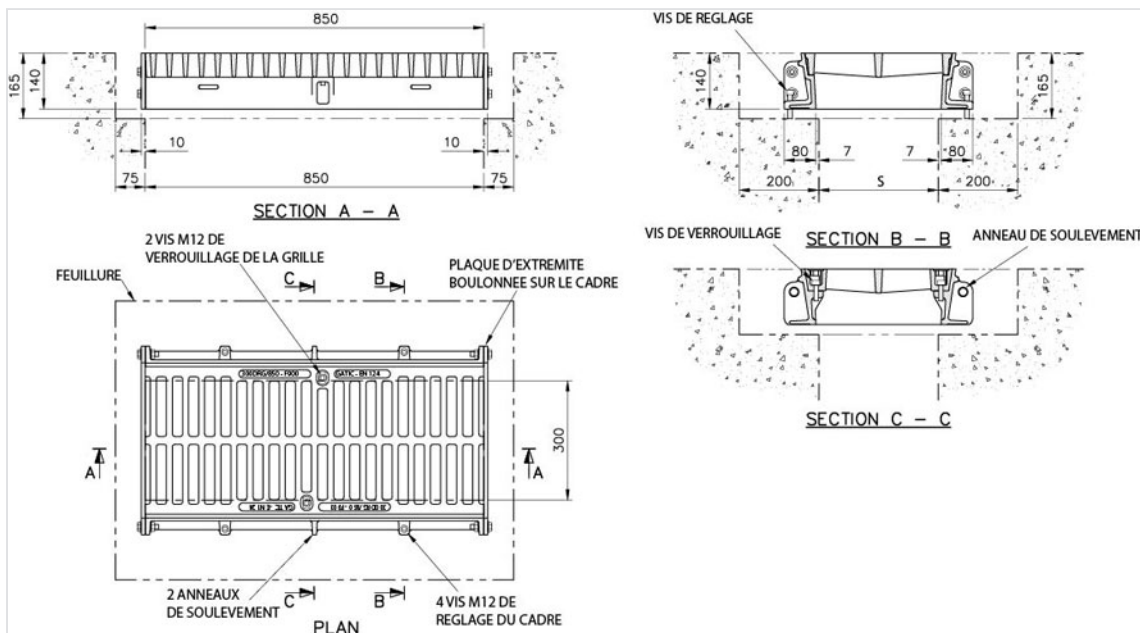


**GATIC Grating on frame - F900 class - Assembly on channels**



CxD (mm)	H (mm)	Waterway area	Mass (kg)	References
300x850	140	12.56 dm <sup>2</sup>	96.00	EFGR83ZX
450x850	140	22.15 dm <sup>2</sup>	122.00	EFGR84ZX
600x850	140	27.68 dm <sup>2</sup>	227.00	EFGR86ZX
750x700	140	22.90 dm <sup>2</sup>	248.00	EFGR77ZX



## Material and coating:

- Grating and frame in Ductile Iron: bituminous varnish

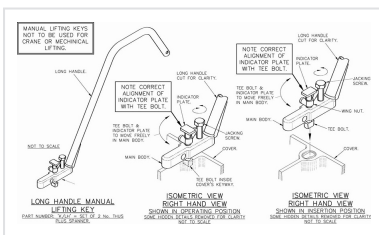
## Field of application:

- F900 class (Group 6) according to standard EN124-2, areas imposing particularly high wheel loads, such as aircraft pavements, etc...

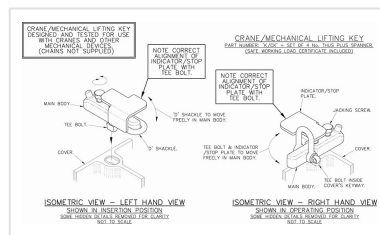
## Main characteristics:

- Machined and greased bearing surfaces.
- Adjusting screw for levelling of the frame.
- Locked gratings on their T section frame.
- Accessories of handling: Set of keys D17, [D18](#) or [D20](#) reference.

## Linked products



Long handle manual lifting key



Mechanical key

The information on this sketch is, to the best of our knowledge correct at the time of printing. However Saint-Gobain are constantly looking at ways of improving their products and services therefore reserve the right to change without prior notice, any of the data shown. Any orders placed will be subject to our Standard Conditions of Sale, available on request.