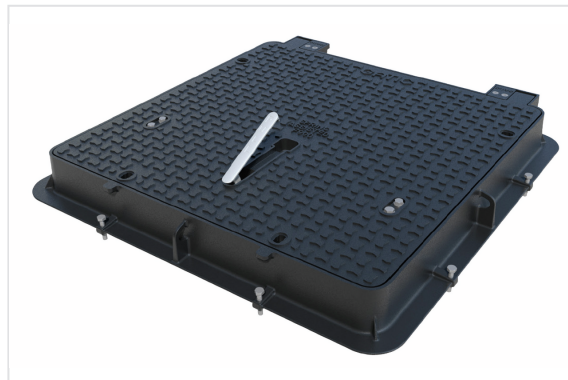
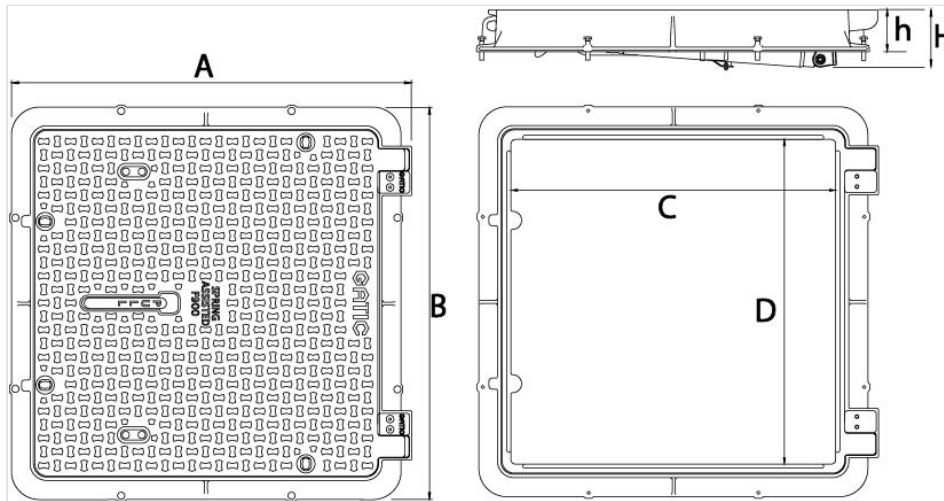


## GATIC Type LFA F900



Type	AxA (mm)	CxD (mm)	H (mm)	h (mm)	Mass (kg)	References
LFA750	983x958	750x750	142	118	202.00	DFAL75AX75X99
LFA900	1133x1108	900x900	162	118	249.00	DFAL90AX90X99



### Material and coating:

- Frame and cover in Ductile Iron EN GJS 600-3: black water base coating
- Assisted gas arm M-STRUTS - 304 stainless steel

### Field of application:

- Assisted LFA duct covers withstand the load and permanent set specified by EN124:2015 for F900 class (Areas imposing particularly high wheel loads, e.g. aircraft pavements)
- The LFA gates are suitable for installation in slow traffic areas, such as aircraft pavements, taxiways of civil airports and dockyards

### Main characteristics:

- Assisted opening: allows opening and closing by a single operator. The lifting effort is about 25 kg
- Mechanical gas arm M-Struts
  - M-Struts® are designed for demanding environments and provide a maintenance free alternative to conventional gas struts. M-Struts® are made of grade 304 stainless steel. Unlike gas and pneumatic models, M-Struts® have no internal gases to leak or seals to fail in extreme conditions.
  - Made in 304 stainless steel
- Functions
  - Automatically engaging anti-accidental closure mechanism
  - Slam latch
  - Locking feature – single Allen key required for opening
  - Integrated lifting handle
  - For assisted tightness products, consult specific range

*The information on this sketch is, to the best of our knowledge correct at the time of printing. However Saint-Gobain are constantly looking at ways of improving their products and services therefore reserve the right to change without prior notice, any of the data shown. Any orders placed will be subject to our Standard Conditions of Sale, available on request.*