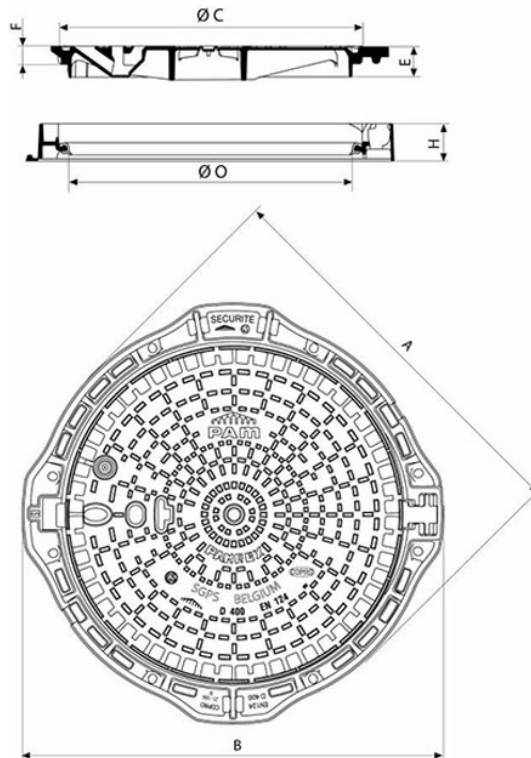


Manhole cover PAMREX 700 Safety D400 class Round frame - Non ventilated



A (mm)	B (mm)	C (mm)	E (mm)	F (mm)	H (mm)	O (mm)	Total Mass (kg)	Cover mass (kg)	Packaging	References
900	950	763	85	50	100	700	115.00	71 kg	10	CDPA70EC



Material and coating:

- Frame and cover in Ductile Iron EN GJS 400-15: water base coating
- [Ring in elastomer](#)

Field of application:

- D400 class (Group 4) according to standard EN124-2, carriageways of roads, hard shoulders and parking areas for all types of road vehicles.
- Heavy traffic zones and frequent visits.

Main characteristics:

- [Hinged cover and ergonomic handling box](#)
- Interchangeable covers
- Frame fitted for optimized bedding
- Opens to 130°, blocks at 90° when closing
- [Identification of the versions](#)
- [Operating Key C24](#)

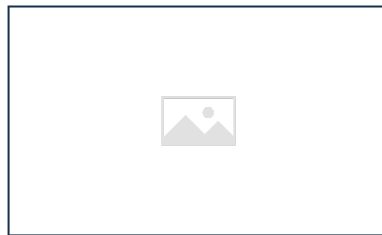
Security

- [Quarter turn locking system](#)
- [Anti-theft pins](#)
- [Limitation of the run-off water entries](#)

Accessories



PAMREX / VIATOP
manhole covers

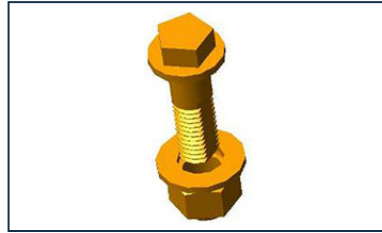


Identification of PAMREX
manhole covers versions

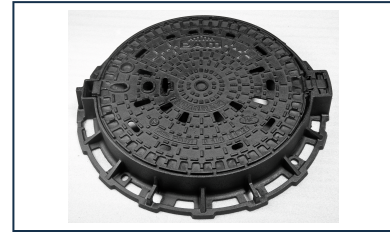
Linked products



Elastomer Ring



1/4 turn locks



Anti-theft pins for
PAMREX / VIATOP 600
and 700 / VIATOP 2
manhole cover



Accessories for Manhole
Covers: operating key
C24 for PAMREX, VIATOP
and VIATOP 2 Manhole
covers

The information on this sketch is, to the best of our knowledge correct at the time of printing. However Saint-Gobain are constantly looking at ways of improving their products and services therefore reserve the right to change without prior notice, any of the data shown. Any orders placed will be subject to our Standard Conditions of Sale, available on request.