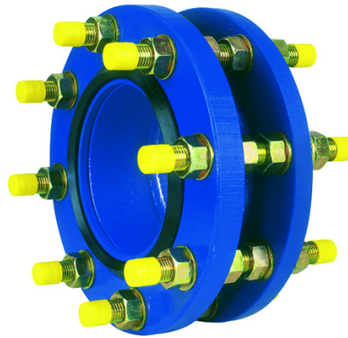


Self restrained dismantling joint stroke 8-10mm type steel PA DN50-600



The self restrained dismantling joint Type PA for flanged valves allow the installation or removal of equipment between two fixed flanges of a pipeline.

The short stroke sliding system reaches a 8 to 10 mm displacement depending on the DN. The displacement is obtained by taking away the adjustment ring.

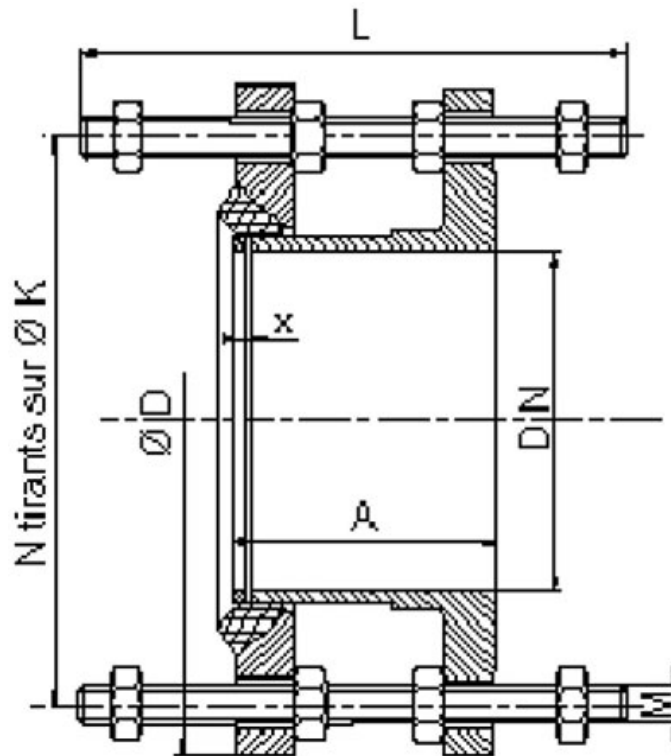
For this type of self restrained dismantling joint the locking of the valve to the pipeline is made by the tie bars and the gland.

Range

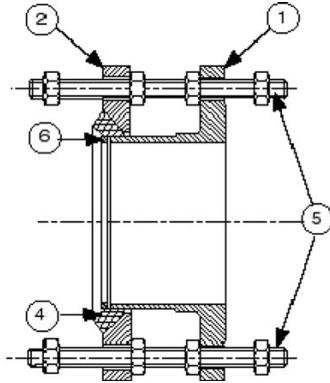
The self restrained dismantling joint **Type PA** exists in a range from **DN40 to 600, PFA10 or PFA16**.

DN (mm)	PN	A (mm)	ØD (mm)	ØK (mm)	N	M	L (mm)	X (mm)	Mass (kg)	References
50	10 - 16	100	165	125	4	M16	180	8	6.00	MDA50EACH
65	10 - 16	100	185	145	4	M16	180	8	7.50	MDA65EACH
80	10 - 16	100	200	160	8	M16	180	8	9.00	MDA80EACH
100	10 - 16	100	220	180	8	M16	180	8	13.00	MDB10EACH
125	10 - 16	100	250	210	8	M16	180	10	17.00	MDB12EACH
150	10 - 16	100	285	240	8	M20	195	10	21.00	MDB15EACH
200	10	100	340	295	8	M20	195	10	29.00	MDB20EABH
200	16	100	340	295	12	M20	195	10	29.00	MDB20EAAH
250	10	110	395	350	12	M20	215	10	38.00	MDB25EABH
250	16	120	405	355	12	M24	225	10	44.00	MDB25EAAH
300	10	110	445	400	12	M20	215	10	46.00	MDB30EABH

DN (mm)	PN	A (mm)	ØD (mm)	ØK (mm)	N	M	L (mm)	X (mm)	Mass (kg)	References
300	16	120	460	410	12	M24	225	10	55.00	MDB30EAAH
350	10	120	505	460	16	M20	215	10	57.00	MDB35EABH
350	16	120	520	470	16	M24	250	10	77.00	MDB35EAAH
400	10	120	565	515	16	M24	230	10	72.00	MDB40EABH
400	16	130	580	525	16	M27	250	10	98.00	MDB40EAAH
450	10	120	615	565	20	M24	230	10	80.00	MDB45EABH
450	16	130	640	585	20	M27	250	10	122.00	MDB45EAAH
500	10	120	670	620	20	M24	230	10	90.00	MDB50EABH
500	16	150	715	650	20	M30	285	10	156.00	MDB50EAAH
600	10	120	780	725	20	M27	240	10	120.00	MDB60EABH
600	16	150	840	770	20	M33	300	12	222.00	MDB60EAAH



Material and coating



Item	Description	Material	Coating
1	Fixed body	Steel E24	
2	Gland	Steel E24	Blue epoxy powder 250 microns medium thickness with a minimum of 200 microns, in accordance with EN 14901-1 (PECB) - RAL 5005
3	Sliding body	Steel E24	
4	Gasket	EPDM	
5	Tie bars	Zinc plated steel	Zinc plating 15 µ
6	Adjustment ring	Steel E24	Blue epoxy powder 250 microns medium thickness with a minimum of 200 microns, in accordance with EN 14901-1 (PECB) - RAL 5005

Compliance to Standards

For the PA Joint

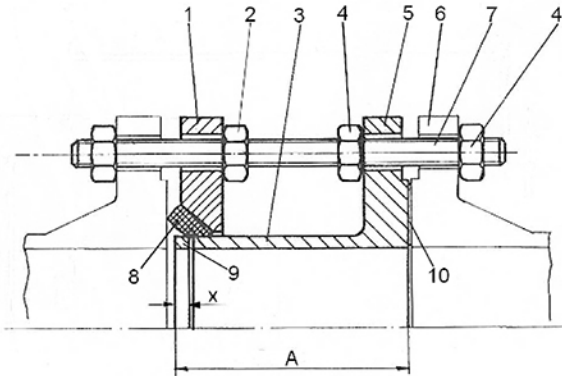
These equipments comply with the standard **NFE 29220**, especially concerning the flanges dimensions according to the **NFE 29203 and 29209**.

The full-flange sliding body: the flange is according to **ISO 7005** standard.

Installation

- Fits flanged parts equipped with flanges complying with: ISO 7005-2 - ISO 2531 - EN 1092-2
- The « X » stroke is obtained by taking away the metallic adjustment ring.
- In case of substitution of the contiguous equipment, this dismantling joint can be used only if the face to face of the equipment is maintained or reduced of a limit value equal to the X dimension.
- If on the other hand the new adjoining equipment is smaller, this dismantling joint is not appropriate. It is then necessary to add an adaptor or to use a large stroke dismantling joint

Instructions of assembly



The self-restrained dismantling joint **Type PA** for flanged valves allows the installation or removal of equipment between two fixed flanges of a pipeline.


Before the assembly of the piece on the pipe, it is first of all necessary to bring the tightening flange (1) and then the sealing joint (8) on the pipe (3). Then, install the piece on the pipe.

Thread the tie rods in the various flanges maintaining the ring (9) in position according to the above drawing. After having centered the joint (10), provided by the customer, between the flanges (5) and (6), please tighten the nuts (4).

You can now put the tightening flange in position and tighten it using the nuts (2). The sealing joint (8) is compressed and is used thus as sealing piece.

The self-restrained dismantling joint is ready and can receive all the axial thrust of the pipe.

Marking

		PONT-A-MOUSSON	
JOINT DE DEMONTAGE AUTOBUTE POUR TUYAU FONTE			
TYPE	<input type="text"/>	DN / PN	<input type="text"/>
MAT / CORPS	<input type="text"/>	DATE FAB.	<input type="text"/>
CUE PAM SA	<input type="text"/>		
PORV	<input type="text"/>		
MADE IN GERMANY			

The information on this sketch is, to the best of our knowledge correct at the time of printing. However Saint-Gobain are constantly looking at ways of improving their products and services therefore reserve the right to change without prior notice, any of the data shown. Any orders placed will be subject to our Standard Conditions of Sale, available on request.