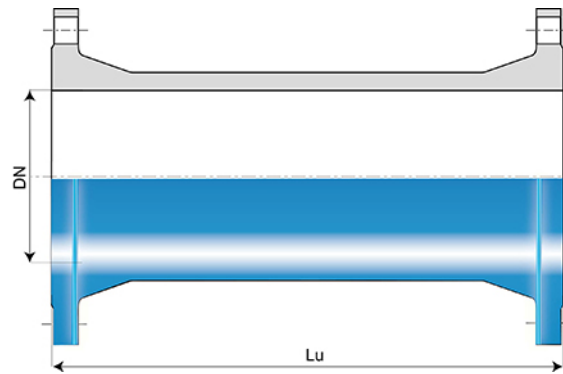


Short Double Flanged Pipe (PECB) with Fixed Flanges



DN (mm)	Lu (mm)	PN 10		PN 16		PN 25	
		Mass (kg)	References	Mass (kg)	References	Mass (kg)	References
80	100	7.20	BBA80MT1UTT	7.20	BBA80MT1UTT	7.20	BBA80MT1UTT
80	150	7.78	BBA80MT1ZTT	7.78	BBA80MT1ZTT	7.78	BBA80MT1ZTT
80	200	8.80	BBA80MT1VTT	8.80	BBA80MT1VTT	8.80	BBA80MT1VTT
80	250	9.60	BBA80MT1ATT	9.60	BBA80MT1ATT	9.60	BBA80MT1ATT
80	300	10.40	BBA80MT1WTT	10.40	BBA80MT1WTT	10.40	BBA80MT1WTT
80	400	12.00	BBA80MT1XTT	12.00	BBA80MT1XTT	12.00	BBA80MT1XTT
80	600	13.70	BBA80MT1QTT	13.70	BBA80MT1QTT	13.70	BBA80MT1QTT
100	100	8.35	BBB10MT1UTT	8.35	BBB10MT1UTT		
100	200	10.10	BBB10MT1VTT	10.10	BBB10MT1VTT		
100	250	11.00	BBB10MT1ATT	11.00	BBB10MT1ATT	11.98	BBB10MT3ATT
100	300	12.70	BBB10MT1WTT	12.70	BBB10MT1WTT	16.00	BBB10MT3WTT
100	400	15.00	BBB10MT1XTT	15.00	BBB10MT1XTT		
100	500	16.80	BBB10MT1BTT	16.80	BBB10MT1BTT		
150	200	16.50	BBB15MT1VTT	16.50	BBB15MT1VTT	22.00	BBB15MT3VTT
150	250	16.70	BBB15MT1ATT	16.70	BBB15MT1ATT	18.73	BBB15MT3ATT
150	300	19.70	BBB15MT1WTT	19.70	BBB15MT1WTT		
150	400	23.50	BBB15MT1XTT	23.50	BBB15MT1XTT		
200	200			21.10	BBB20MT2VTT		
200	250	25.00	BBB20MT1ATT	23.10	BBB20MT2ATT		
200	300	28.80	BBB20MT1WTT	25.00	BBB20MT2WTT		
200	400	39.00	BBB20MT1XTT	31.50	BBB20MT2XTT		

		PN 10		PN 16		PN 25	
DN (mm)	Lu (mm)	Mass (kg)	References	Mass (kg)	References	Mass (kg)	References
250	250			31.50	BBB25MT2ATT		
250	300			34.20	BBB25MT2WTT		
250	500			50.50	BBB25MT2BTT	57.90	BBB25MT3BTT
250	800	81.30	BBB25MT1STT	80.50	BBB25MT2STT		
300	300	46.80	BBB30MT1WTT	44.80	BBB30MT2WTT		
300	250			41.42	BBB30MT2ATT		
300	500			65.80	BBB30MT2BTT		
350	300					85.00	BBB35MT3WTT
450	250			82.78	BBB45MT2ATT		
500	250	86.00	BBB50MT1ATT	119.00	BBB50MT2ATT		
500	500	162.60	BBB50MT1BTT	167.80	BBB50MT2BTT	196.00	BBB50MT3BTT
500	600	182.00	BBB50MT1QTT				
600	250			169.90	BBB60MT2ATT		
600	500	219.50	BBB60MT1BTT	235.70	BBB60MT2BTT	274.00	BBB60MT3BTT
700	250			190.00	BBB70MT2ATT		
700	500	289.00	BBB70MT1BTT	293.00	BBB70MT2BTT		
800	250	228.00	BBB80MT1ATT	223.00	BBB80MT2ATT		
800	500	373.20	BBB80MT1BTT	329.00	BBB80MT2BTT	458.00	BBB80MT3BTT
900	250					426.00	BBB90MT3ATT
900	500	447.50	BBB90MT1BTT	393.00	BBB90MT2BTT	556.00	BBB90MT3BTT
1000	500	549.60	BBC10MT1BTT	564.00	BBC10MT2BTT	711.00	BBC10MT3BTT

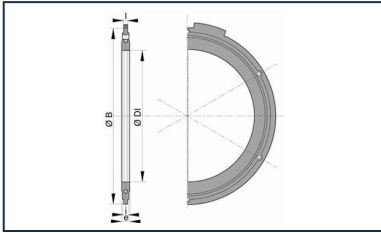
Field of use:

- For drinking water networks

Main characteristics:

- External and internal coating : Blue epoxy powder 250 microns average thickness with a minimum of 200 microns, conforming to EN 14901 (PECB)
- In conformity with EN 545:2010 and ISO 2531:2009

Linked products



Flanged joint with hot galvanized steel bolts, nuts and washers

The information on this sketch is, to the best of our knowledge correct at the time of printing. However Saint-Gobain are constantly looking at ways of improving their products and services therefore reserve the right to change without prior notice, any of the data shown. Any orders placed will be subject to our Standard Conditions of Sale, available on request.