

ADVICE FOR LAYING

IZIFIT

SAFETY FOR ALL TYPES OF PIPELINE

DUCTILE IRON FITTINGS
FOR PRESSURISED PLASTIC PIPES IN
PVC-U – PVC-BO – PEE



IZIFIT® assembly video
www.youtube.com/PamLineTV



THE IZIFIT® RANGE 3

FITTINGS AND JOINTS 3

ADVICE FOR LAYING 8

SUPPLY OF FITTINGS AND JOINTS 8

LUBRICATING PASTE 10

INSTALLATION METHODS 11

- Assembling fittings using a crowbar 11
- Assembling fittings using a ratchet strap 11
- Assembling fittings using a ratchet chain winch 13
- Assembling fittings using an assembly tool 15

WHY SHOULD I USE IZIFIT®? 17

- The advantages of IZIFIT® fittings 17
- Locking 18
- Using the component parts 18

CONNECTIONS 19

DETAILED ASSEMBLY INSTRUCTIONS 19

COMPATIBILITY 21

FITTINGS AND JOINTS

Fittings range



IZIFIT® PN 10-16 bar 90° bend	
DN/OD	Weight in kg
63	3.30
75	4.40
90	5.50
110	7.10
125	8.80
140	9.50
160	11.69
200	16.42
225	19.40



IZIFIT® PN 10-16 bar 45° bend	
DN/OD	Weight in kg
63	3.07
75	4.20
90	5.10
110	6.20
125	7.00
140	8.65
160	10.10
200	13.26
225	16.01



IZIFIT® PN 10-16 bar 22.5° bend	
DN/OD	Weight in kg
63	2.57
75	3.40
90	4.40
110	5.50
125	6.60
140	6.97
160	8.44
200	11.42
225	13.67



IZIFIT® PN 10-16 bar 11.25° bend	
DN/OD	Weight in kg
75	3.50
90	3.80
110	5.80
125	6.70



IZIFIT® PN 10-16 bar non-sliding sleeve	
DN/OD	Weight in kg
63	2.56
90	4.00
110	4.90
125	5.50
140	6.61
160	8.02
200	10.93
225	12.88



IZIFIT® PN 10-16 bar semi-sliding sleeve	
DN/OD	Weight in kg
75	5.30
90	6.30
110	7.30
125	8.80

IZIFIT

FITTINGS AND JOINTS



IZIFIT® PN 10-16 bar taper		
DN/OD	Ø mm	Weight in kg
75	63	2.89
90	75	3.70
110	75	4.60
	90	5.00
125	75	5.00
	90	5.20
140	110	5.50
	90	5.51
	110	5.91
160	125	6.29
	75	6.02
	90	6.37
	110	6.72
200	125	7.01
	140	7.43
	125	8.97
	140	9.28
225	160	9.87
	110	9.94
	140	10.50
	160	10.96
	200	11.94



IZIFIT® PN 10-16 bar T-piece 2 x tubular sockets with one fixed flange		
DN/OD		Weight in kg
body	pipeline	
63	40	5.14
	60	6.20
75	40	5.80
	60	7.80
90	65	8.20
	40	6.80
	60	8.60
	65	8.70
110	80	9.40
	40	7.60
	60	9.40
	65	9.50
125	80	11.00
	100	12.20
	40	9.20
	60	10.80
140	65	11.10
	80	11.50
	100	12.20
	125	15.00
160	40	9.34
	60	11.04
	80	12.35
	100	14.03
200	125	16.28
	40	10.60
	60	12.35
	80	13.73
225	100	15.40
	125	17.74
	150	20.16
	40	14.32
	60	16.27
	80	17.74
200	100	19.67
	125	22.05
	150	24.54
	200 (1)	29.09
	200 (2)	29.09
	60	18.23
225	80	19.71
	100	21.75
	150	26.67
	200 (1)	31.62
	200 (2)	31.62

FITTINGS AND JOINTS



IZIFIT® PN 10-16 bar T-piece 3 x tubular sockets		
DN/OD		Weight in kg
body	pipeline	
75	75	5.60
90	75	6.40
	90	6.80
110	75	7.50
	90	7.80
	110	8.70
125	75	8.80
	90	9.20
	110	10.00
140	125	11.00
	110	10.55
	125	11.46
160	140	11.90
	110	11.93
	125	12.66
	140	13.25



IZIFIT® PN 10-16 bar fixed flange		
DN/OD	DN flange	Weight in kg
63	60	3.62
75	60	4.15
75	65	4.15
90	80	4.70
110	100	6.00
125	125	7.90
140	125	8.56
160	150	10.64
200	200 (1)	14.78
	200 (2)	14.78
225	225 (1)	15.51
	225 (2)	15.51



IZIFIT® PN 10-16 bar female socket flange		
DN/OD	DN flange	Weight in kg
63	60	3.88
75	60	5.30
75	65	5.30
90	80	5.50
110	100	6.70
125	125	8.20
140	125	9.15
160	150	11.22
200	200 (1)	15.18
	200 (2)	15.18
225	200 (1)	16.38
	200 (2)	16.38



IZIFIT® PN 10-16 bar duckfoot bend		
DN/OD	DN flange	Weight in kg
75	80	8.30
90	80	8.00
110	80	11.40
125	80	13.60

IZIFIT® fittings are delivered with joints in place.

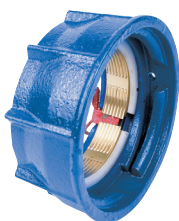
(1) PN10

(2) PN16

Data and photographs are non-contractual.



IZIFIT® PN 10-16 plug	
DN/OD	Weight in kg
75	1.60
90	2.00
110	2.20
125	3.00
140	3.51
160	4.24



PN 10-16 bar locking backing flange	
DN/OD	Weight in kg
63	1.56
140	2.80
160	3.10
200	4.18
225	4.64

FITTINGS AND JOINTS

Range of joints
DN/OD 75, 90, 110, 125

PVC-U

PE






PVC-BO

- Fittings with pre-installed joints



Allowable operating pressure

Reference standard EN 12842 Ductile Iron Fittings for PVC-U or PE piping systems.

Materials	PVC-U				PE		PVC-O	
	unlocked 		locked 		locked 		unlocked 	locked 
DN/OD	PN10	PN16	PN10	PN16	PN10	PN16	PN16	PN16
63	10	16	10*	16*	10	16	16	-
75	10	16	10	16	10	16	16	10
90	10	16	10	16	10	16	16	10
110	10	16	10	16	10	16	16	10
125	10	16	10	16	10	16	16	10
140	10	16	10*	16*	10	16		
160	10	16	10*	16*	10	16		
200	10	16	10*	16*	10	16		
225	10	16	10*	16*	10	16		

* with locking flange

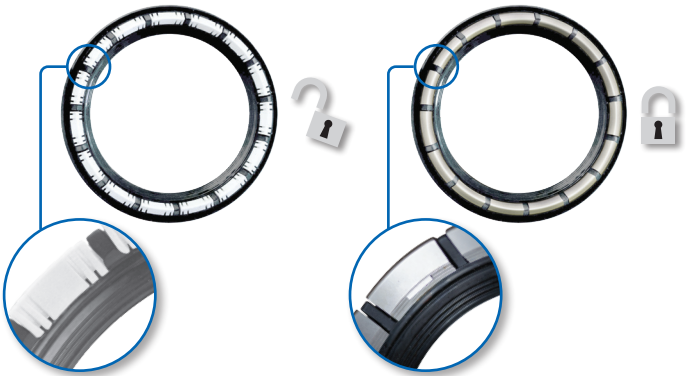
IZIFIT® fittings

- Palletized packing;
- Protective foam to avoid shocks;
- Keep on the protective foam until the fitting is to be installed.



SUPPLY OF FITTINGS AND JOINTS

IZIFIT® locking rings



- Packed in tubes:
 - Tube of 15 joints in DN/OD 75 and 90
 - Tube of 20 joints in DN/OD 110 and 125
- Do not take the joints out of their tubes before use;
- Use the joints progressively;
- In freezing temperatures ensure the joints remain flexible. If possible, keep them above 0 °C.



■ IMPORTANT

Each tube of joints is delivered with **assembly instructions**.

■ IMPORTANT

Analysing the risks inherent to the installation of a pipe, a fitting or an accessory and controlling these **are the responsibility of the company in charge** (particularly the use of personal protective equipment).

IZIFIT LUBRICATING PASTE

Lubricant

Using a silicone-based lubricant guarantees that the gasket positioning and the pipe-fitting assembly are fully dependable. This lubricant reduces the pushing strength by 20% to 30%* compared to usual lubricants.

* depending on DN



850 g box with applicator brush:
part number **158128**

Ambient temperature: 5 °C		Ambient temperature: 16 °C	
DN/OD	One box per	DN/OD	One box per
75	40 joints	75	60 joints
90	36 joints	90	55 joints
110	34 joints	110	50 joints
125	30 joints	125	45 joints

Using the applicator brush
Ensures the product remains clean
throughout its working life.



■ ATTENTION

The IZIFIT® range must be assembled with the specified lubricating paste.
No other lubricant, including Lub A (Natural®), should be used.



ADVICE FOR LAYING

Assembling fittings using a crowbar

The design of the joints as well as the use of silicon lubricating paste means that joints can be assembled using a crowbar.

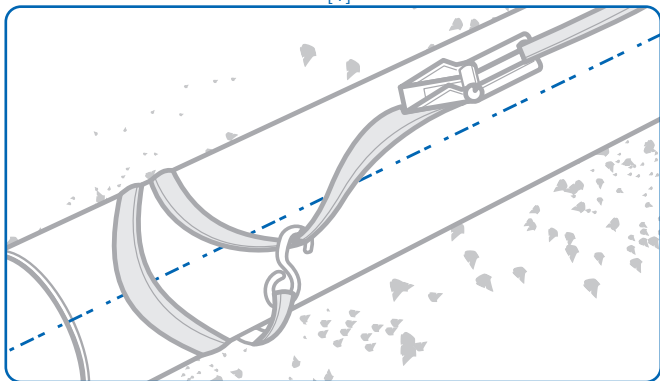
ASSEMBLE PARTS ONLY WHEN PERFECTLY ALIGNED.

Assembling fittings using a ratchet strap

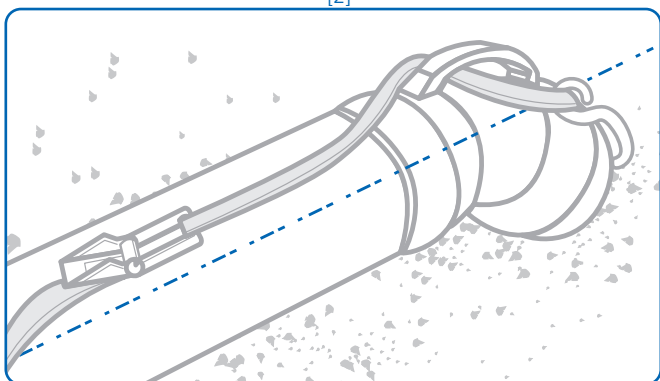
(diagrams on following page)

- Pass the longer of the two straps around the pipe barrel [1];
- Fit the shorter strap through the handle of the fitting [2];
- Tighten the straps;
- Assemble by tightening the ratchet [3] while keeping the fitting aligned with the pipe barrel;
- Comply with the assembly depth rules;
- Make any desired angular adjustment after assembly.

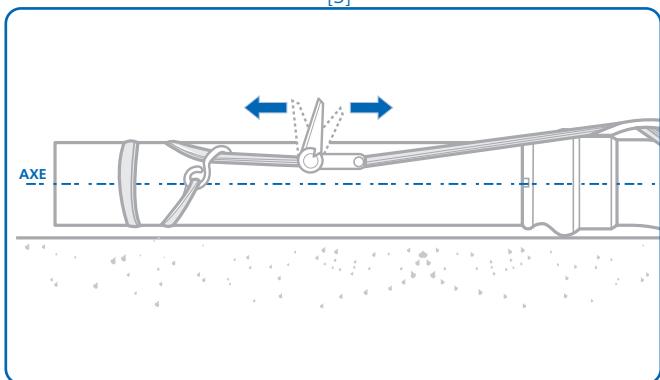
[1]



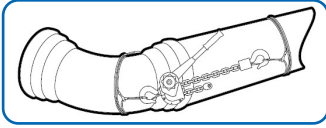
[2]



[3]

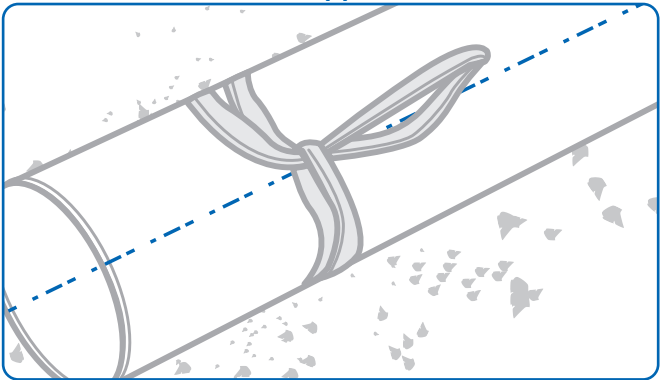


ADVICE FOR LAYING

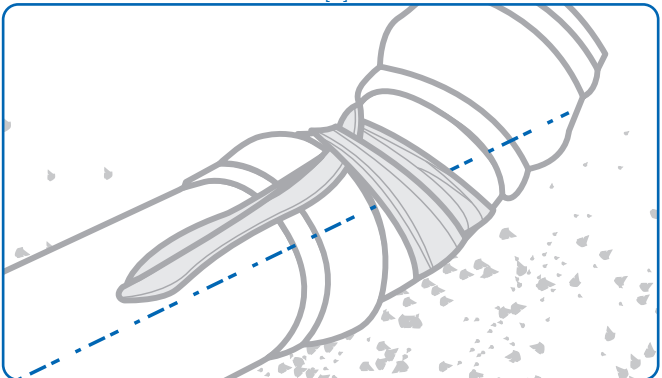
Assembling fittings using a ratchet chain winch

- Pass a strap around the pipe barrel [1];
- Pass a second strap around the fitting [2];
- Connect the ratchet chain winch between the 2 straps [3];
- Assemble by tightening the ratchet chain winch [4] while keeping the fitting aligned with the pipe barrel;
- Comply with the assembly depth rules;
- Make any desired angular adjustment after assembly.

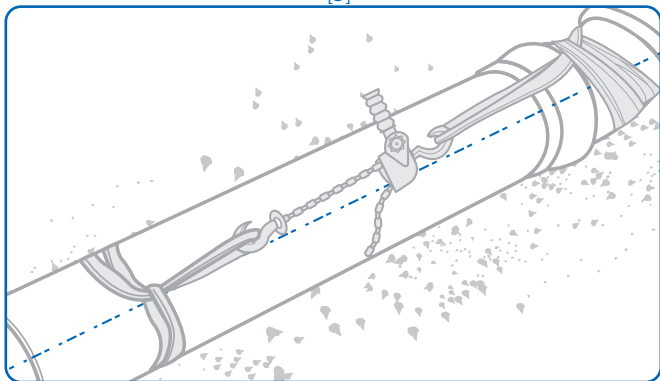
[1]



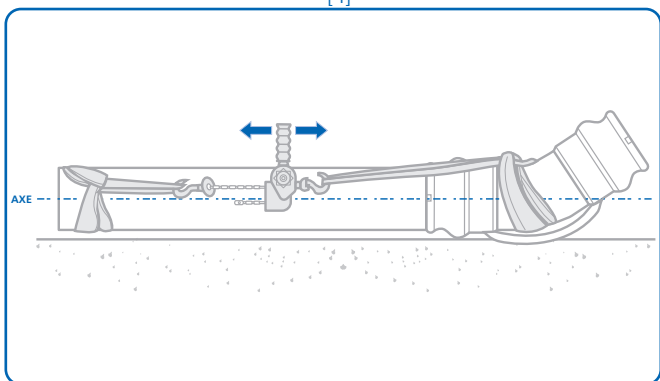
[2]



[3]



[4]

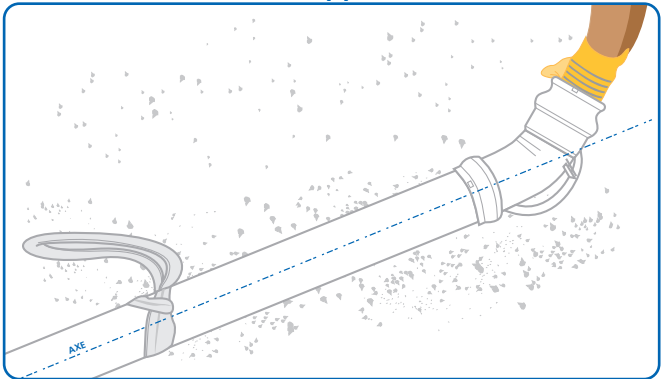


ADVICE FOR LAYING

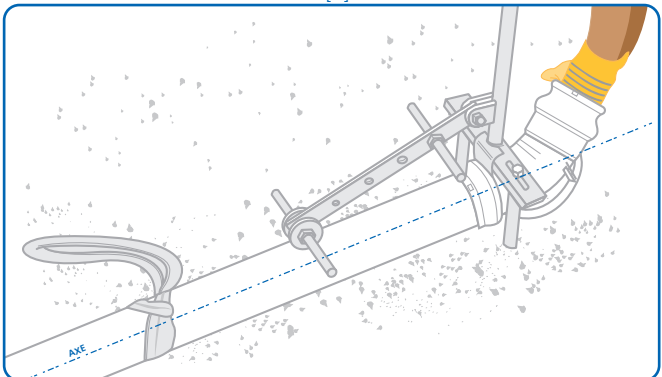
Assembling fittings using an assembly tool

- Pass a strap around the pipe barrel [1];
- Position the assembly tool with the fork directly above the fitting [2];
- Attach the strap to the pivoting arm of the assembly tool. Tighten the strap [3];
- Pull the lever to complete the assembly [4];
- Comply with the assembly depth rules;
- Make any desired angular adjustment after assembly.

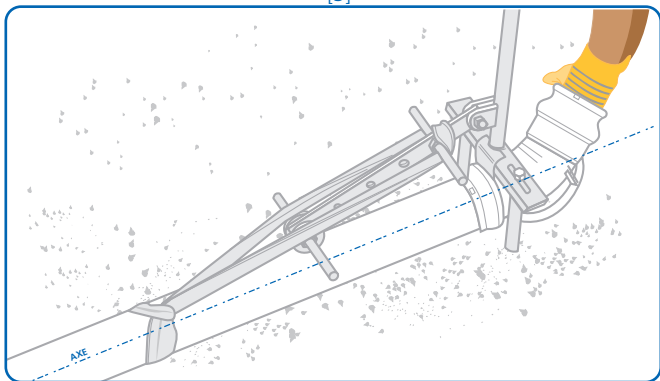
[1]



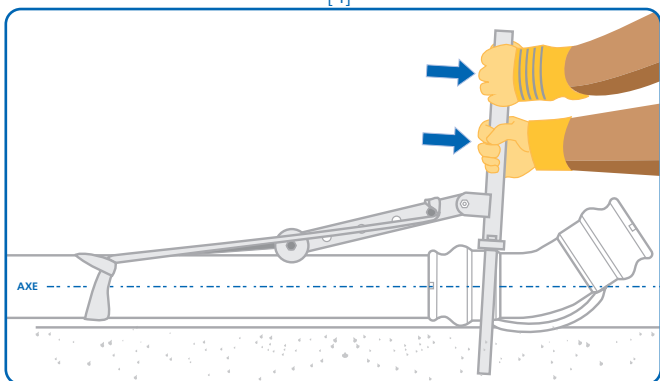
[2]



[3]



[4]



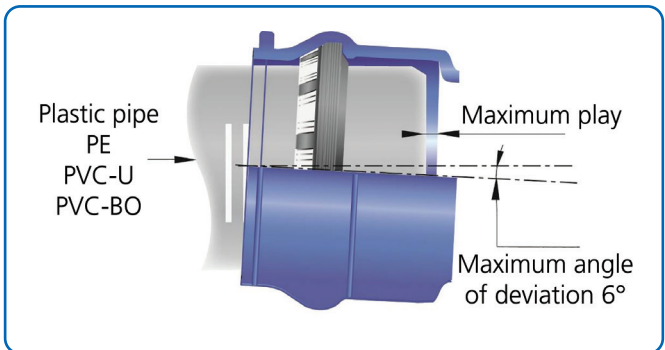
WHY SHOULD I USE IZIFIT®?

The advantages of IZIFIT® fittings

- Strength and ease of handling



- Maximum angular play



IZIFIT

WHY SHOULD I USE IZIFIT®?

Locking

- Locking = no concrete thrust block (thus saving time)



- L = Length to lock

Using the component parts

■ IMPORTANT

Analysing the risks inherent to the installation of a pipe, a fitting or an accessory and controlling these **are the responsibility of the company in charge** (particularly the use of personal protective equipment).



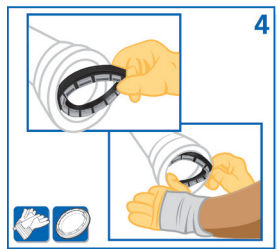
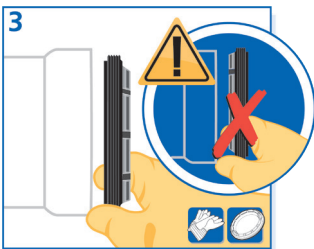
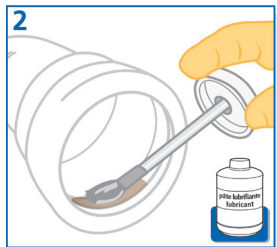
IMPLEMENTATION

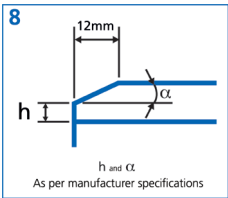
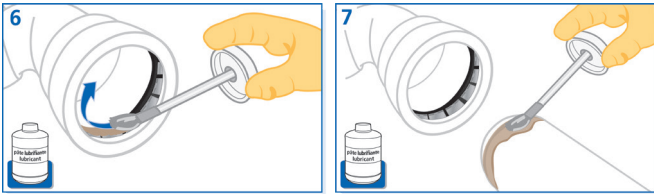
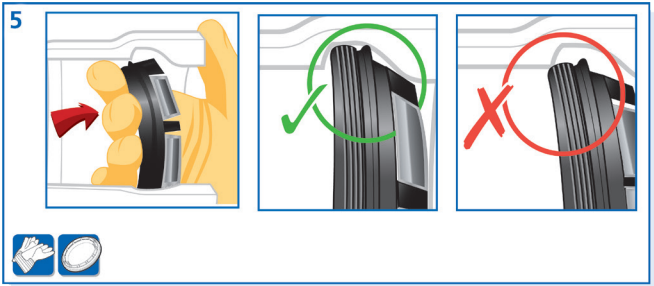
Detailed assembly instructions

- Clean the inside of the socket [1];
- Lubricate the inside of the fitting [2];
- present the joint with its segmented part facing the outside [3];
- Gentle pressure is sufficient to insert it into the base of its housing in the fitting [4];
- Make sure the joint is in place in its housing, pulling it outwards against its edge [5] until it sits firmly in the socket;
- Lubricate the inside of the joint along all its circumference [6];
- Lubricate the spigot end of the pipe to be assembled [7];
- Chamfer its end [8];
- Assemble the aligned components [9] using an appropriate tool (see Pages 11 to 16 – installation methods);
- Comply with the assembly depth rules [10];
- Check the position of the joint using a metal ruler [11];
- Make any desired angular adjustment (6° max.) [12].

Useful tip

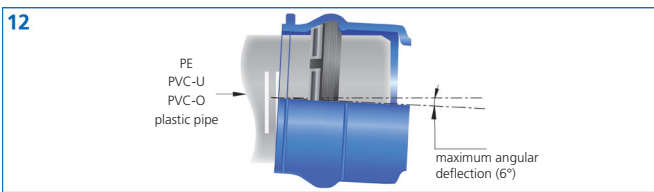
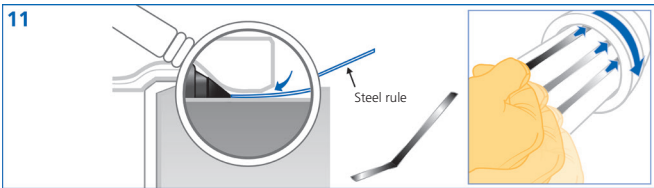
To make sure the whole joint is lubricated, apply the lubricant by rotating the applicator brush over a turn and a half.





10

DN	75	90	110	125	140	160
P	80	82	87	90	90	90



COMPATIBILITIES

IZIFIT® compatibility

- Spigots of:
 - PVC pipes to EN 1452
 - PEHD pipes to EN 12201
 - Molecularly-oriented pipes to NFT54948
 can be assembled with IZIFIT® fittings.
- The PFA or PN of the joint is then that of the plastic tube or pipe (marked on the product).

PVC-U

PE

PVC-BO



For in-line assembly, only PVC-U or PVC-BO pipes can be assembled with an unlocked IZIFIT® joint. For assembling with HDPE pipe, the use of a locked IZIFIT® joint is recommended for DN 75, 90, 110 and 125 pipes and a locking backing flange for other DN's.

Anchored junction with IZIFIT® fitting (PVC and HDPE)

For assembly with a PVC pipe, or an HDPE pipe with a fitting in the IZIFIT® range, it is necessary to use a locked IZIFIT® joint for DN 75, 90, 110 and 125 pipes.



For assembly with a PVC pipe, or an HDPE pipe with a fitting in the IZIFIT® range, it is necessary to use a locking backing flange for DN 63 and pipes in the 140 to 225 range.

Commissioning and satisfaction

Compliance with all the implementation recommendations in this document will ensure reliability and safety in the distribution network being installed.

All of the supply components have been designed by professionals to be used alongside the guidelines contained in this document.



HOW TO CONTACT PAM

AUSTRIA

Saint-Gobain Rigips AUSTRIA
GesmbH
Vertriebsbüro PAM
Archenweg 52
6020 Innsbruck
Tel: + 43 512 34 17 17 -0

BELGIUM

Saint-Gobain PAM BELGIUM
Raatshovenstraat, n°2
3400 – LANDEN
Tel: + 32 11 88 01 00

FINLAND

Saint-Gobain PAM FINLAND
Strömberginkuja 2
00380 HELSINKI
Tel: +358 207 424 600

GREECE

Saint-Gobain HELLAS
5 KLEISOURAS STR,
14452 METAMORGOSI
,ATHENS GREECE
Tel: +30 210 2831804

NORWAY

Saint-Gobain BYGGEVARER
Nils Hansens vei 13,
0667 OSLO
Tel: + 47 23 17 58 60

THE NETHERLANDS

Saint-Gobain PAM Nether-
lands
Markerkant 10-17
1316 AB ALMERE
Tel: + 31 36 53 333 44

POLAND

Saint-Gobain Construction
Products POLSKA SP Z O.O.
Ul. Cybernetyki 9+
PL - 02-677 WARSZAWA
Tel: + 48 22 751 41 72

PORTUGAL

Saint-Gobain PAM PORTUGAL,
S.A.
Rua das Marinhas do Tejo ,
n° 15 2690-361 SANTA IRIA DE
AZÓIA
Tel: + 351 218 925 000

CZECH REPUBLIC

Saint-Gobain PAM CZ
Budova DOCK II,
Smrčkova ulice,
Praha 8 – Libeň
Tel: + 420 311 712 611

ROMANIA

Saint-Gobain Construction
Products Romania S.r.l.
SGCPro SRL
Soseaua Pipera nr.43, Cladirea
Floreasca Park, corpul A, etajul
3, birourile 25-41, cod 014254,
sector 2, Bucuresti, Romania
Tel: + 40 21 207 57 29

SLOVAKIA

Saint-Gobain Construction
Products, s.r.o.
Dlha 1780/6
90031 Stupava
Tel: +421 (0) 2 654 569 61

Enquiries from other EU
and overseas countries:
please consult Saint-
Gobain PAM Canalisation



Saint-Gobain PAM Canalisation •
Head office

21, avenue Camille Cavallier
54705 Pont-à-Mousson Cedex • FRANCE
Phone : +33 (0) 383 807 350
www.pamline.com