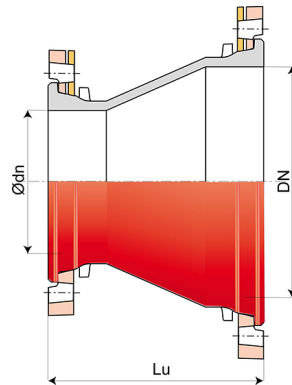


## Taper INTEGRAL with 2 Rotatable Flanges



DN (mm)	Ødn (mm)	Lu (mm)	PN 10		PN 16	
			Mass (kg)	References	Mass (kg)	References
100	80	200	10.70	BAB10VE1IEFF	10.70	BAB10VE1IEFF
200	150	304	23.50	BAB20VE1JFF	23.50	BAB20VE2JFF
200	100	385			22.70	BAB20VE2FFF
200	125	326.5			23.00	BAB20VE2GFF
250	150	319	34.00	BAB25VE1JFF		
250	200	300			33.00	BAB25VE2KFF
300	150	424	45.00	BAB30VE1JFF		
300	200	323	49.00	BAB30VE1KFF		
400	350	300	79.30	BAB40VE1YFF		
400	300	380			78.40	BAB40VE2MFF
450	400	300	92.50	BAB45VE1NFF		
500	400	600			144.80	BAB50VE2NFF
600	400	600	183.00	BAB60VE1NFF	212.00	BAB60VE2NFF
600	500	600	173.80	BAB60VE1QFF		

(\*) please contact us

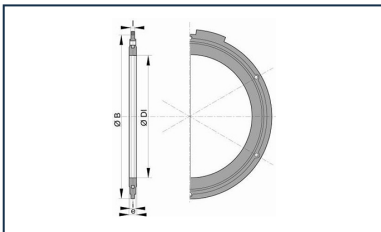
## Field of use:

- Separate sewer system and combined sewer system
- Application: gravity flow and rising main sewerage systems
- Type of effluent: domestic wastewater and rainwater
- For networks with rising main under pressure
- For effluents between pH1 and pH13

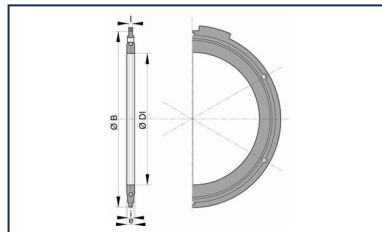
## Main characteristics:

- External and internal coating: red epoxy powder 250µm (PECR)
- EN 598 / CE Marking
- Declaration of performances [DoP-INTEGRAL005EN](#)
- Designed according to the regulatory texts:
  - NF EN 476: general prescriptions for components used in the networks
  - NF EN 752: Conception of sewage projects
  - NF EN 1610: Reception of the works
  - CCTG: Fascicule 70 (sewage work)

## Linked products



Flanged joint with hot galvanized steel bolts, nuts and washers for sewage



Flanged joint with hot galvanized steel bolts, nuts and washers

*The information on this sketch is, to the best of our knowledge correct at the time of printing. However Saint-Gobain are constantly looking at ways of improving their products and services therefore reserve the right to change without prior notice, any of the data shown. Any orders placed will be subject to our Standard Conditions of Sale, available on request.*