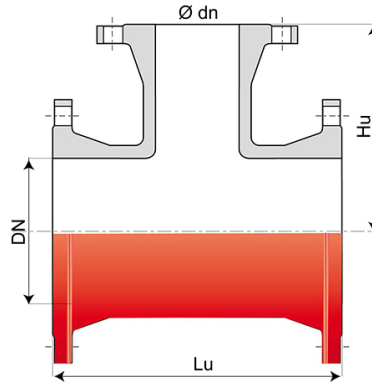


## Tee INTEGRAL with 3 Fixed Flanges



DN (mm)	Ø dn (mm)	Lu (mm)	Hu (mm)	PN 10		PN 16		PN 25	
				Mass (kg)	References	Mass (kg)	References	Mass (kg)	References
80	80	330	165	15.60 kg	BBA80TE1EFF	15.60 kg	BBA80TE1EFF	15.60 kg	BBA80TE1EFF
100	50	369	185	17.80 kg	BBB10TE1BFF	17.80 kg	BBB10TE1BFF		
100	80	360	175	18.40 kg	BBB10TE1EFF	18.40 kg	BBB10TE1EFF		
100	80	360	180	19.30 kg	BBB10TE1FFF	19.30 kg	BBB10TE1FFF		
150	80	440	205	24.00 kg	BBB15TE1EFF	24.00 kg	BBB15TE1EFF		
150	100	440	210	29.50 kg	BBB15TE1FFF	29.50 kg	BBB15TE1FFF		
150	150	440	220	32.50 kg	BBB15TE1JFF	32.50 kg	BBB15TE1JFF		
200	80	520	235			33.70 kg	BBB20TE2EFF		
200	100	520	240			42.50 kg	BBB20TE2FFF		
200	150	520	250			40.70 kg	BBB20TE2JFF		
200	200	520	260			49.10 kg	BBB20TE2KFF		
250	80	700	265			45.30 kg	BBB25TE2EFF		
250	100	700	275			47.20 kg	BBB25TE2FFF		
250	150	700	300			53.40 kg	BBB25TE2JFF		
250	200	700	325			60.00 kg	BBB25TE2KFF		
250	250	700	350			72.00 kg	BBB25TE2LFF		
300	200	800	350			103.00 kg	BBB30TE2KFF		
300	80	800	290			94.50 kg	BBB30TE2EFF		
300	100	800	300			88.70 kg	BBB30TE2FFF		
300	150	800	325			100.00 kg	BBB30TE2JFF		
300	250	800	380			85.00 kg	BBB30TE2LFF		

DN (mm)	Ø dn (mm)	Lu (mm)	Hu (mm)	PN 10		PN 16		PN 25	
				Mass (kg)	References	Mass (kg)	References	Mass (kg)	References
300	300	800	400			115.00 kg	BBB30TE2MFF		
350	80	850	325			120.00 kg	BBB35TE2EFF		
350	100	850	325			122.00 kg	BBB35TE2FFF		
350	150	850	325			123.00 kg	BBB35TE2JFF		
350	200	850	325			141.50 kg	BBB35TE2KFF		
350	250	850	325			132.00 kg	BBB35TE2LFF		
350	300	850	425			144.00 kg	BBB35TE2MFF		
350	350	850	425			153.00 kg	BBB35TE2YFF		
400	80	900	350			167.00 kg	BBB40TE2EFF		
400	100	900	350			154.00 kg	BBB40TE2FFF		
400	150	900	350			155.00 kg	BBB40TE2JFF		
400	200	900	350			159.00 kg	BBB40TE2KFF		
400	250	900	350			161.00 kg	BBB40TE2LFF		
400	300	900	450			177.00 kg	BBB40TE2MFF		
400	350	900	450			185.00 kg	BBB40TE2YFF		
400	400	900	450			173.20 kg	BBB40TE2NFF		
450	80	950	375			187.00 kg	BBB45TE2EFF		
450	100	950	375			188.00 kg	BBB45TE2FFF		
450	150	950	375			190.00 kg	BBB45TE2JFF		
450	200	950	375			193.00 kg	BBB45TE2KFF		
450	250	950	375			197.00 kg	BBB45TE2LFF		
450	300	950	475			213.00 kg	BBB45TE2MFF		
450	350	950	475			221.00 kg	BBB45TE2YFF		
450	400	950	475			229.00 kg	BBB45TE2NFF		
450	450	950	475			237.00 kg	BBB45TE2PFF		
500	100	1000	400			261.00 kg	BBB50TE2FFF		
500	150	1000	400			241.00 kg	BBB50TE2JFF		
500	200	1000	400			246.00 kg	BBB50TE2KFF		
500	250	1000	400			274.00 kg	BBB50TE2LFF		
500	300	1000	500			290.00 kg	BBB50TE2MFF		
500	350	1000	500			345.00 kg	BBB50TE2YFF		
500	400	1000	500			277.00 kg	BBB50TE2NFF		
500	450	1000	500			290.00 kg	BBB50TE2PFF		

DN (mm)	Ø dn (mm)	Lu (mm)	Hu (mm)	PN 10		PN 16		PN 25	
				Mass (kg)	References	Mass (kg)	References	Mass (kg)	References
500	500	1000	500			304.00 kg	BBB50TE2QFF		
600	80	1100	450			349.00 kg	BBB60TE2EFF		
600	100	1100	450			330.00 kg	BBB60TE2FFF		
600	150	1100	450			398.00 kg	BBB60TE2JFF		
600	200	1100	450			408.00 kg	BBB60TE2KFF		
600	250	1100	450			358.00 kg	BBB60TE2LFF		
600	300	1100	550			417.00 kg	BBB60TE2MFF		
600	350	1100	550			385.00 kg	BBB60TE2YFF		
600	400	1100	550			436.00 kg	BBB60TE2NFF		
700	700	1200	600	510.00 kg	BBB70TE1SFF	510.00 kg	BBB70TE2SFF		
900	900	1500	750	907.00 kg	BBB90TE1UFF	940.00 kg	BBB90TE2UFF	1083.00 kg	BBB90TE3UFF
1000	1000	1650	830	1194.00 kg	BBC10TE1VFF	1260.00 kg	BBC10TE2VFF		
1200	700	1470	900	1586.00 kg	BBC12TE1SFF				
1200	800	1470	915	1602.00 kg	BBC12TE1TFF				
1200	1000	1700	945	1577.00 kg	BBC12TE1VFF	1686.00 kg	BBC12TE2VFF		
1200	1200	1900	950	1810.00 kg	BBC12TE1BFF	1979.00 kg	BBC12TE2BFF		
1400	1400	2470	1100	2676.00 kg	BBC14TE1CFF	2833.00 kg	BBC14TE2CFF		
1500	1500	2470	1100	2807.00 kg	BBC15TE1DFF	3093.00 kg	BBC15TE2DFF		
1600	1000	2065	1150	3216.00 kg	BBC16TE1VFF				
1600	1600	2730	1240	3670.00 kg	BBC16TE1EFF				
1800	800	1885	1230	3290.00 kg	BBC18TE1TFF				
1800	900	1885	1245			3700.00 kg	BBC18TE2UFF		

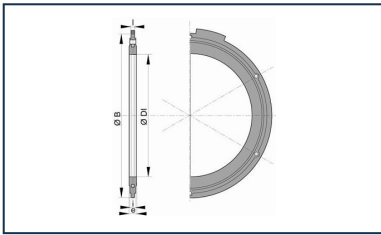
## Field of use:

- Separate sewer system and combined sewer system
- Application: gravity flow and rising main sewerage systems
- Type of effluent: domestic wastewater and rainwater
- For networks with rising main under pressure
- For effluents between pH1 and pH13

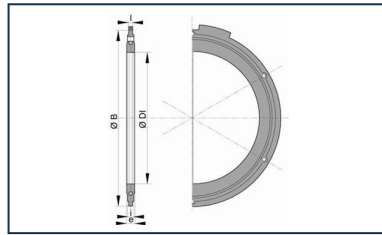
## Main characteristics:

- External and internal coating: red epoxy powder 250µm (PECR)
- EN 598 / CE Marking
- Declaration of performances [DoP-INTEGRAL005EN](#)
- Designed according to the regulatory texts:
  - NF EN 476: general prescriptions for components used in the networks
  - NF EN 752: Conception of sewage projects
  - NF EN 1610: Reception of the works
  - CCTG: Fascicule 70 (sewage work)

## Linked products



Flanged joint with hot galvanized steel bolts, nuts and washers for sewage



Flanged joint with hot galvanized steel bolts, nuts and washers

*The information on this sketch is, to the best of our knowledge correct at the time of printing. However Saint-Gobain are constantly looking at ways of improving their products and services therefore reserve the right to change without prior notice, any of the data shown. Any orders placed will be subject to our Standard Conditions of Sale, available on request.*