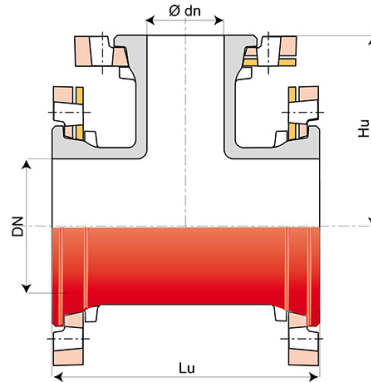


Tee INTEGRAL with 3 Rotatable Flanges



DN (mm)	Ødn (mm)	Lu (mm)	Hu (mm)	PN 10		PN 16		PN 25	
				Mass (kg)	References	Mass (kg)	References	Mass (kg)	References
80	80	330	165	15.60	BAA80UE1EFF	15.60	BAA80UE1EFF	15.60	BAA80UE1EFF
150	150	440	220	35.00	BAB15UE1JFF	35.00	BAB15UE1JFF		
200	100	520	240	44.50	BAB20UE1FFF	44.50	BAB20UE2FFF		
200	200	520	260	52.00	BAB20UE1KFF	51.00	BAB20UE2KFF		
200	40	520	200			41.50	BAB20UE2AFF		
200	50	520	210			42.00	BAB20UE2BFF	44.50	BAB20UE3BFF
200	60	520	220			42.50	BAB20UE2CFF		
200	80	520	235			43.50	BAB20UE2EFF		
200	125	520	240			46.00	BAB20UE2GFF		
200	150	520	250			48.00	BAB20UE2JFF		
250	100	430	270			50.90	BAB25UV2FFF		
250	200	540	290			72.30	BAB25UE2KFF		
250	250	600	300			83.00	BAB25UE2LFF		
300	80	450	298	74.40	BAB30UE1EFF				
300	100	450	300	74.40	BAB30UV1FFF	73.00	BAB30UV2FFF		
300	150	560	310	88.00	BAB30UE1JFF	87.00	BAB30UE2JFF		
300	200	560	320	94.00	BAB30UE1KFF	92.00	BAB30UE2KFF		
300	300	680	340	116.90	BAB30UE1MFF				
300	250	680	305			106.00	BAB30UE2LFF		
350	100	470	330	96.00	BAB35UV1FFF				
350	250	644	360	129.00	BAB35UE1LFF			145.00	BAB35UE3LFF

DN (mm)	Ødn (mm)	Lu (mm)	Hu (mm)	PN 10		PN 16		PN 25	
				Mass (kg)	References	Mass (kg)	References	Mass (kg)	References
350	350	760	380	157.00	BAB35UE1YFF				
350	200	590	350			119.00	BAB35UE2KFF		
400	100	490	360	114.00	BAB40UV1FFF	122.30	BAB40UV2FFF		
400	200	605	380	137.00	BAB40UE1KFF				
400	250	724	390	158.00	BAB40UE1LFF				
400	300	724	400	163.80	BAB40UE1MFF	171.70	BAB40UE2MFF		
400	400	840	420	195.00	BAB40UE1NFF	207.40	BAB40UE2NFF		
450	150	620	400	143.00	BAB45UE1JFF				
450	100	515	395			152.20	BAB45UE2FFF		
500	150	650	430	190.66	BAB50UE1JFF	218.70	BAB50UE2JFF		
500	200	650	440	196.00	BAB50UE1KFF	222.00	BAB50UE2KFF		
500	100	533	420			194.00	BAB50UV2FFF		
500	400	880	480			293.00	BAB50UE2NFF		
500	500	1000	500			345.00	BAB50UE2QFF		
600	100	700	475	205.30	BAB60UE1FFF				
600	400	930	540	344.00	BAB60UE1NFF	398.00	BAB60UE2NFF		
600	600	1100	580	443.00	BAB60UE1RFF	518.00	BAB60UE2RFF		
600	300	812	520			352.10	BAB60UE2MFF		

(*) please contact us

Field of use:

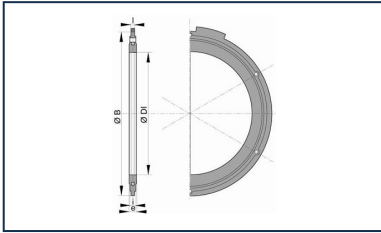
- Separate sewer system and combined sewer system
- Application: gravity flow and rising main sewerage systems
- Type of effluent: domestic wastewater and rainwater
- For networks with rising main under pressure
- For effluents between pH1 and pH13

Main characteristics:

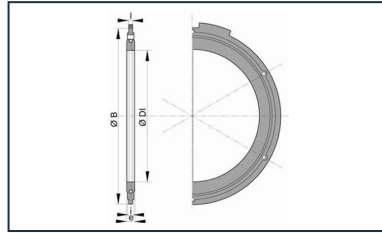
- External and internal coating: red epoxy powder 250µm (PECR)
- EN 598 / CE Marking
- Declaration of performances [DoP-INTEGRAL005EN](#)
- Designed according to the regulatory texts:
 - NF EN 476: general prescriptions for components used in the networks
 - NF EN 752: Conception of sewage projects
 - NF EN 1610: Reception of the works

- CCTG: Fascicule 70 (sewage work)

Linked products



Flanged joint with hot galvanized steel bolts, nuts and washers for sewage



Flanged joint with hot galvanized steel bolts, nuts and washers

The information on this sketch is, to the best of our knowledge correct at the time of printing. However Saint-Gobain are constantly looking at ways of improving their products and services therefore reserve the right to change without prior notice, any of the data shown. Any orders placed will be subject to our Standard Conditions of Sale, available on request.