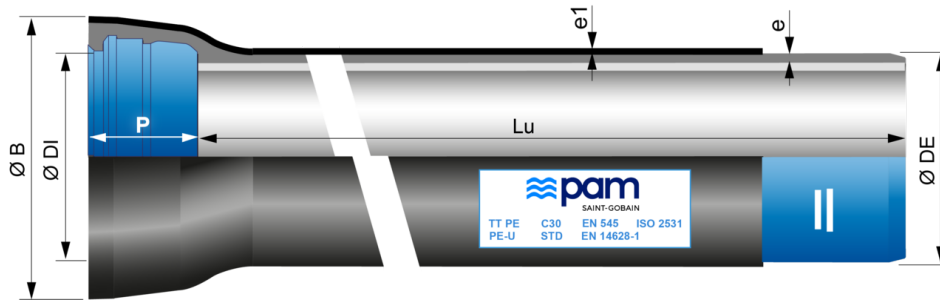


## TT PE pipes DN80 to 1000 with STANDARD socket (preferred pressure classes)



DN	Lu (m)	Class	e (mm)	e1 (mm)	ØDE (mm)	ØDI (mm)	P (mm)	ØB (mm)	Mass (kg/m)	References
80	6.00	C40	4.4	1.8	98	101.4	92.5	147	12.60	SSA80Q60AG
100	6.00	C40	4.4	1.8	118	121.4	94.5	168	15.40	SSB10Q60AG
150	6.00	C40	4.5	2	170	173.4	100.5	222	23.00	SSB15Q60AG
200	6.00	C40	4.7	2	222	225.2	106.5	279	31.40	SSB20Q60AG
250	6.00	C40	5.5	2	274	276.8	105.5	334	43.80	SSB25Q60AG
300	6.00	C40	6.2	2.2	326	328.8	107.5	392	57.40	SSB30F60AG
350	6.00	C30	6.4	2.2	378	380.9	110.5	446	72.50	SSB35G60AG
400	6.00	C30	6.5	2.2	429	431.9	112.5	499.5	83.50	SSB40G60AG
450	6.00	C30	6.9	2.2	480	483	115.5	554	97.80	SSB45G60AG
500	6.00	C30	7.5	2.5	532	535	117.5	608.6	117.10	SSB50G60AG
600	6.00	C30	8.7	2.5	635	638.1	132.5	718	155.40	SSB60G60AG
700	6.00	C25	8.8	2.5	738	741.7	192	830	193.80	SSB70H60AG
700	6.96	C25	8.8	2.5	738	741.7	192	830	190.52	SSB70H70AG
800	6.95	C25	9.6	3	842	845.8	197	935.6	235.29	SSB80H70AG
900	6.95	C25	10.6	3	945	948.9	200	1043.4	286.31	SSB90H70AG
1000	6.96	C25	11.6	3	1048	1052	203	1152.4	342.25	SSC10H70AG

### Legend:

- DN: nominal diameter
- Lu: laying length, in m
- Class: pressure class according to EN 545 and ISO 2531
- e: nominal thickness according to ISO 2531, in mm
- e1: thickness of polyethylene according to EN 14628-1
- ØDE: external nominal diameter of the barrel according to EN 545 and ISO 2531, in mm

- ØDI: internal nominal diameter of the socket, in mm
- P: nominal depth of the socket, in mm
- ØB: nominal diameter of the socket, in mm
- Mass: total mass per metre (including cement coating and socket), determined with the nominal thickness, in kg/m
- Reference: commercial reference Saint-Gobain PAM
- Marking sticker can be different depending on DN

## Field of use:

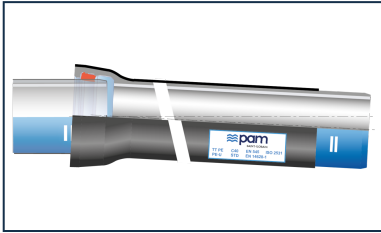
- **Soils characteristics:**  
Ductile iron pipes coated with TT PE may be buried in contact with a large number of soils, normal and highly corrosive soils (low resistivity soil, mixed soils, polluted soils...), also in soils with occurrence of stray currents. Please refer to the informative annex D of EN545.
- **Water characteristics:**  
Ductile iron pipelines supplied with lining sulfate resisting blast furnace cement mortar may be used to convey all types of water intended for human consumption in conformity with the Directive 98/83/EC. For other types of water, the limits of use are as given in below Table. Please refer to the informative annex E of EN545.

	Minimum value	Maximum value			
Parameter	pH	CO2 aggressive	Sulphate	Magnesium	Ammonium
Unit	-	mg/l	mg/l	mg/l	mg/l
Value	5,5	15	3000	500	30

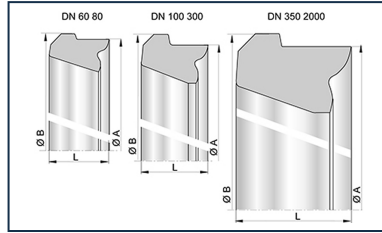
## Main characteristics:

- Pressure class in conformity with Standard EN 545-2010 and ISO 2531-2009
- External coating with 2 barriers, in accordance with EN14628-1:2020 (option PE-G):
  - Back barrier: a metallic layer of ZnAl(Cu) 85/15 alloy (mini surface density 400 g/m<sup>2</sup>) applied by spraying molten metal on to the surface of the ductile iron + finishing acrylic layer (Aquacoat)
  - Front barrier: a continuous thick organic layer of extruded PE + hot melt adhesive layer applied on the back barrier, standard thickness according to DN (table 2 of EN14628-1)
- Internal coating: sulfate resisting blast furnace cement mortar
- EPDM rubber gasket suitable for contact with drinking water (ACS, KTW, WRAS,...)
- Restraining possible with STD Vi joint (without bolts)

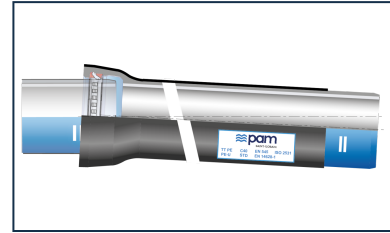
## Linked products



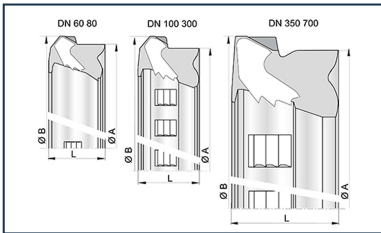
Kit Standard TT PE Pipe + Standard Gasket



Standard gasket for Pipes and Fittings DN60-2000



Kit Standard TT PE Pipe + Standard Vi Gasket



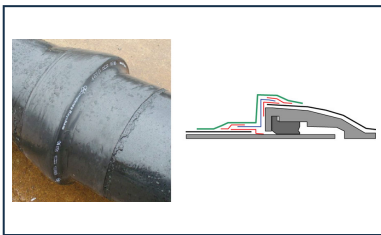
STD Vi gasket for Pipes and Fittings DN60-700



Lubricating paste - BLUPAM



Lubricating paste - NATURAL, INTEGRAL, and PLUVIAL ranges



Assembly of the aluminium sleeve on TT pipes

*The information on this sketch is, to the best of our knowledge correct at the time of printing. However Saint-Gobain are constantly looking at ways of improving their products and services therefore reserve the right to change without prior notice, any of the data shown. Any orders placed will be subject to our Standard Conditions of Sale, available on request.*