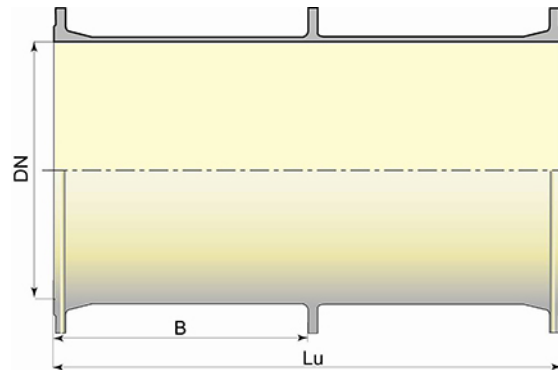


Welded Double Flanged pipe with Anchor flange (central puddle flange) PUR PUX



			PN 10	
DN	B (mm)	Lu (mm)	Mass (kg)	References
1400	1000	2000	2022.00	BBC14MD1EUU
1400	1500	3000	3462.00	BBC14MD1GUU

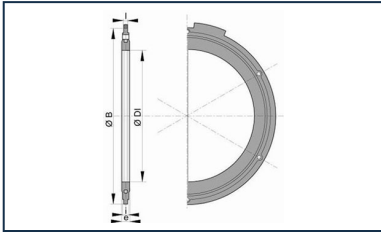
Field of use:

- Aggressive or soft waters
- For high corrosive soils, industrial pollution zones

Main characteristics:

- Internal-external coating : polyurethane coating in accordance with Standard EN 15655
- In conformity with EN 545:2010 and ISO 2531:2009

Linked products



Flanged joint with hot
galvanized steel bolts,
nuts and washers

The information on this sketch is, to the best of our knowledge correct at the time of printing. However Saint-Gobain are constantly looking at ways of improving their products and services therefore reserve the right to change without prior notice, any of the data shown. Any orders placed will be subject to our Standard Conditions of Sale, available on request.