

Welded Flange Spigot pipe



DN	Lu (mm)	PN 10		PN 16		PN 25	
		Mass (kg)	References	Mass (kg)	References	Mass (kg)	References
60	500	8.40	BBA60FB1BAQ	8.40	BBA60FB1BAQ		
60	1000	14.20	BBA60FB1CAQ	14.20	BBA60FB1CAQ		
60	2000	25.70	BBA60FB1EAQ	25.70	BBA60FB1EAQ		
60	3000	37.00	BBA60FB1GAQ	37.00	BBA60FB1GAQ		
60	4000	48.00	BBA60FB1JAQ	48.00	BBA60FB1JAQ		
60	5000	59.00	BBA60FB1LAQ	59.00	BBA60FB1LAQ		
80	500	11.40	BBA80FB1BAQ	11.40	BBA80FB1BAQ		
80	1000	18.50	BBA80FB1CAQ	18.50	BBA80FB1CAQ		
80	2000	33.30	BBA80FB1EAQ	33.30	BBA80FB1EAQ		
80	4000	63.00	BBA80FB1JAQ	63.00	BBA80FB1JAQ		
80	5000	77.70	BBA80FB1LAQ	77.70	BBA80FB1LAQ		
100	1000	23.00	BBB10FB1CAQ	23.00	BBB10FB1CAQ	23.20	BBB10FB3CAQ
100	2000	40.60	BBB10FB1EAQ	40.60	BBB10FB1EAQ		
100	3000	58.70	BBB10FB1GAQ	58.70	BBB10FB1GAQ		
100	4000	76.80	BBB10FB1JAQ	76.80	BBB10FB1JAQ		
100	5000	94.90	BBB10FB1LAQ	94.90	BBB10FB1LAQ		
125	500	16.60	BBB12FB1BAQ	16.60	BBB12FB1BAQ		
125	1000	28.00	BBB12FB1CAQ	28.00	BBB12FB1CAQ		
125	2000	50.00	BBB12FB1EAQ	50.00	BBB12FB1EAQ		
125	3000	72.00	BBB12FB1GAQ	72.00	BBB12FB1GAQ		
125	4000	95.00	BBB12FB1JAQ	95.00	BBB12FB1JAQ		
125	5000	117.00	BBB12FB1LAQ	117.00	BBB12FB1LAQ		

		PN 10		PN 16		PN 25	
DN	Lu (mm)	Mass (kg)	References	Mass (kg)	References	Mass (kg)	References
150	500	20.20	BBB15FB1BAQ	20.20	BBB15FB1BAQ	21.50	BBB15FB3BAQ
150	1000	33.70	BBB15FB1CAQ	33.70	BBB15FB1CAQ	35.00	BBB15FB3CAQ
150	2000	60.70	BBB15FB1EAQ	60.70	BBB15FB1EAQ		
150	3000	87.00	BBB15FB1GAQ	87.00	BBB15FB1GAQ		
150	4000	114.00	BBB15FB1JQAQ	114.00	BBB15FB1JQAQ	116.00	BBB15FB3JQAQ
150	5000	141.00	BBB15FB1LAQ	141.00	BBB15FB1LAQ		
200	500	28.00	BBB20FB1BAQ	27.80	BBB20FB2BAQ	30.70	BBB20FB3BAQ
200	1000	43.00	BBB20FB1CAQ	46.30	BBB20FB2CAQ	49.20	BBB20FB3CAQ
200	2000	83.60	BBB20FB1EAQ	83.40	BBB20FB2EAQ		
200	3000	125.00	BBB20FB1GAQ	120.00	BBB20FB2GAQ		
200	4000	162.00	BBB20FB1JQAQ	158.00	BBB20FB2JQAQ		
200	5000	199.00	BBB20FB1LAQ	195.00	BBB20FB2LAQ		
250	500			36.80	BBB25FB2BAQ	40.20	BBB25FB3BAQ
250	1000	59.80	BBB25FB1CAQ	52.12	BBB25FB2CAQ	102.60	BBB25FB3CAQ
250	2000	107.60	BBB25FB1EAQ	108.50	BBB25FB2EAQ		
250	3000	149.00	BBB25FB1GAQ	149.00	BBB25FB2GAQ		
250	4000	194.00	BBB25FB1JQAQ	195.00	BBB25FB2JQAQ		
250	5000	240.00	BBB25FB1LAQ	240.00	BBB25FB2LAQ		
300	500	48.90	BBB30FB1BAQ	48.70	BBB30FB2BAQ		
300	1000	73.00	BBB30FB1CAQ	74.00	BBB30FB2CAQ		
300	2000	125.07	BBB30FB1EAQ	140.60	BBB30FB2EAQ		
300	3000	180.00	BBB30FB1GAQ	180.00	BBB30FB2GAQ		
300	4000	233.00	BBB30FB1JQAQ	234.00	BBB30FB2JQAQ		
300	5000	286.00	BBB30FB1LAQ	287.00	BBB30FB2LAQ		
350	1000	100.00	BBB35FB1CAQ	102.60	BBB35FB2CAQ	99.00	BBB35FB3CAQ
350	2000	166.00	BBB35FB1EAQ	159.00	BBB35FB2EAQ	165.00	BBB35FB3EAQ
350	3000	232.00	BBB35FB1GAQ	255.40	BBB35FB2GAQ		
350	4000	298.00	BBB35FB1JQAQ	291.00	BBB35FB2JQAQ		
350	5000	409.60	BBB35FB1LAQ	357.00	BBB35FB2LAQ		
400	500	77.50	BBB40FB1BAQ				
400	1000	122.80	BBB40FB1CAQ	122.00	BBB40FB2CAQ		
400	2000	180.00	BBB40FB1EAQ	185.00	BBB40FB2EAQ		
400	3000	256.00	BBB40FB1GAQ	261.00	BBB40FB2GAQ		

		PN 10		PN 16		PN 25	
DN	Lu (mm)	Mass (kg)	References	Mass (kg)	References	Mass (kg)	References
400	4000	332.00	BBB40FB1JAQ	393.80	BBB40FB2JAQ		
400	5000	485.20	BBB40FB1LAQ	484.40	BBB40FB2LAQ		
450	1000	119.00	BBB45FB1CAQ	131.00	BBB45FB2CAQ		
450	2000	208.00	BBB45FB1EAQ	221.00	BBB45FB2EAQ		
450	3000	298.00	BBB45FB1GAQ	310.00	BBB45FB2GAQ		
450	4000	387.00	BBB45FB1JAQ	399.00	BBB45FB2JAQ		
450	5000	476.00	BBB45FB1LAQ	498.00	BBB45FB2LAQ		
500	1000	157.05	BBB50FB1CAQ	153.05	BBB50FB2CAQ		
500	2000	265.00	BBB50FB1EAQ	261.00	BBB50FB2EAQ		
500	3000	371.00	BBB50FB1GAQ	367.00	BBB50FB2GAQ		
500	4000	477.00	BBB50FB1JAQ	473.00	BBB50FB2JAQ		
500	5000	583.00	BBB50FB1LAQ	579.00	BBB50FB2LAQ		
600	1000	192.00	BBB60FB1CAQ	243.00	BBB60FB2CAQ		
600	2000	336.00	BBB60FB1EAQ	386.00	BBB60FB2EAQ		
600	3000	479.00	BBB60FB1GAQ	529.00	BBB60FB2GAQ		
600	4000	622.00	BBB60FB1JAQ	673.00	BBB60FB2JAQ		
600	5000	766.00	BBB60FB1LAQ	816.00	BBB60FB2LAQ		
700	1000	279.00	BBB70FB1CAQ				
700	2000	453.00	BBB70FB1EAQ				
700	3000	626.00	BBB70FB1GAQ				
700	4000	800.00	BBB70FB1JAQ				
700	5000	974.00	BBB70FB1LAQ				
700	6000	1148.00	BBB70FB1NAQ				
800	1000	346.00	BBB80FB1CAQ				
800	2000	559.00	BBB80FB1EAQ				
800	3000	49.00	BBA80FB1GAQ	49.00	BBA80FB1GAQ	49.00	BBA80FB1GAQ
800	4000	985.00	BBB80FB1JAQ				
800	5000	1199.00	BBB80FB1LAQ				
800	6000	1412.00	BBB80FB1NAQ				
900	1000	400.00	BBB90FB1CAQ				
900	2000	660.00	BBB90FB1EAQ				
900	3000	920.00	BBB90FB1GAQ				
900	4000	1180.00	BBB90FB1JAQ				

		PN 10		PN 16		PN 25	
DN	Lu (mm)	Mass (kg)	References	Mass (kg)	References	Mass (kg)	References
900	5000	1440.00	BBB90FB1LAQ				
900	6000	1700.00	BBB90FB1NAQ				
1000	1000	491.00	BBC10FB1CAQ				
1000	2000	803.00	BBC10FB1EAQ				
1000	3000	1114.00	BBC10FB1GAQ				
1000	4000	1426.00	BBC10FB1JAQ				
1000	5000	1737.00	BBC10FB1LAQ				
1000	6000	2049.00	BBC10FB1NAQ				

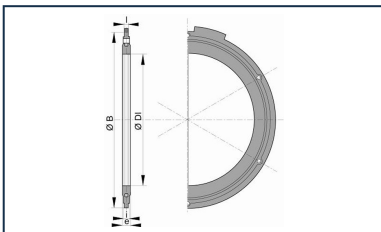
Field of use:

- For drinking water networks

Main characteristics:

- External BioZinalium[®] coating consists of two layers:
 - a layer of zinc-aluminium 85/15 alloy, enriched with copper, with a minimum surface density of 400g/m², applied by spraying molten metal onto the surface of the iron, using an electric arc spray gun, from ZnAl (Cu) alloy wire
 - a protective layer of Aquacoat (semi-permeable), a water-based blue acrylic of average thickness 80 microns applied using a spray gun
- Internal lining: cement mortar
- In conformity with EN 545:2010 and ISO 2531:2009

Linked products



Flanged joint with metallized steel bolts and nuts

Last Update 08/06/2026
Visit website for latest version



The information on this sketch is, to the best of our knowledge correct at the time of printing. However Saint-Gobain are constantly looking at ways of improving their products and services therefore reserve the right to change without prior notice, any of the data shown. Any orders placed will be subject to our Standard Conditions of Sale, available on request.