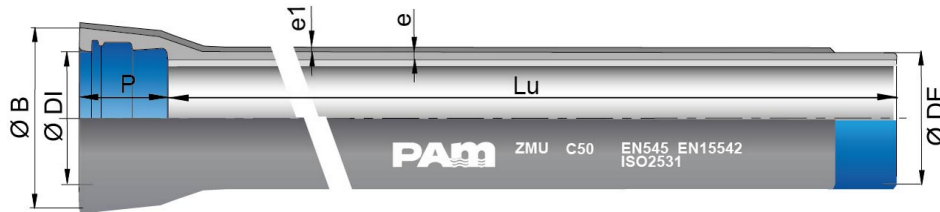


ZMU pipes DN80 to 300 with TYTON socket



DN	Lu (m)	Class	e (mm)	e1 (mm)	ØDE (mm)	ØDI (mm)	P (mm)	ØB (mm)	Mass (kg/m)	References
80	6.00	C50	4.9	5	98	100.5	84	167	16.30	264546
100	6.00	C50	4.9	5	118	120.5	88	188	19.80	264547
125	6.00	C50	4.9	5	144	146.5	91	215	24.40	266034
150	6.00	C50	5	5	170	172.5	94	242	29.30	266036
200	6.00	C50	5.4	5	222	224.5	100	295	40.50	266038
250	6.00	C50	6.4	5	274	276.5	105	352	56.10	177963
300	6.00	C50	7.4	5	326	328.5	110	410	74.10	177968

Legend:

- DN: nominal diameter
- Lu: laying length, in m
- Class: pressure class according to EN 545 and ISO 2531
- e: nominal thickness according to ISO 2531, in mm
- e1: external thickness of ZMU coating, in mm (cement mortar with acrylic fibers and resin) according to EN15542
- ØDE: external nominal diameter of the barrel according to EN 545 and ISO 2531, in mm
- ØDI: internal nominal diameter of the socket, in mm
- P: nominal depth of the socket, in mm
- ØB: nominal diameter of the socket, in mm
- Mass: total mass per metre (including cement coating and socket), determined with the nominal thickness, in kg/m
- Reference: commercial reference Saint-Gobain PAM

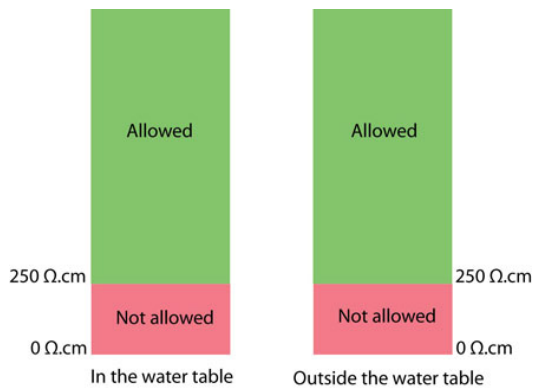
Field of use:

- For drinking water supply networks

Main characteristics:

- Joint in alimentary elastomer EPDM (ACS, KTW, WRAS,...)
- External coating: a layer of zinc-aluminium 85/15 alloy, enriched with copper, with a minimum surface density of 400g/m², applied by spraying molten metal onto the surface of the iron, using an electric arc spray gun, from ZnAl (Cu) alloy wire + a protective layer of Aquacoat (semi-permeable), a water-based blue acrylic of average thickness 80 microns applied using a spray gun + cement mortar ZMU with polymeric additiv and reinforced with PE fibers
- Internal coating: sulfate resisting blast furnace cement mortar
- ZMU pipes are in conformity with EN 545
- ZMU coating in conformity with EN 15542

Type of soils:



ZMU coating can be in contact with nearly all types of soil. Please consider the following matrix based upon resistivity of soils. In case of doubt, please advise.

Type of water:

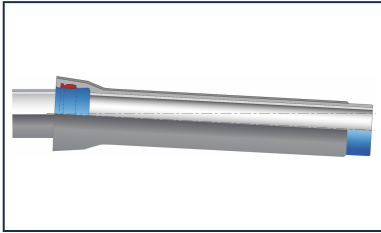
Ductile iron pipes with internal coating of sulphate resisting blast furnace cement mortar (SRC) are adapted to convey all types of drinking water in conformity with Directive EU 2020/2184.

In case of other type of water, please refer to below information to check the compatibility with cement mortar.

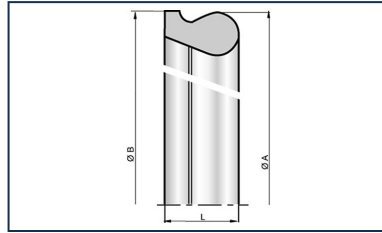
	Minimum value	Maximum value			
Parameter	pH	CO2 aggressive	Sulphate	Magnesium	Ammonium
Unit	-	mg/l	mg/l	mg/l	mg/l
Value	5,5	15	3000	500	30

Other cement lining also available on request.

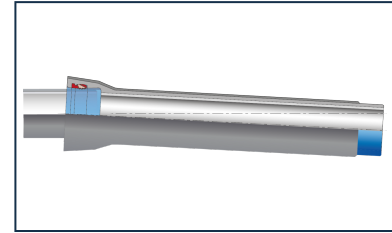
Linked products



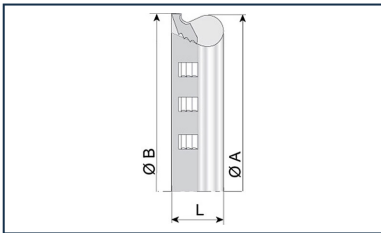
Kit Tyton ZMU Pipe + Tyton gasket



TYT Gasket for TYT Pipes and Fittings DN80-300



Kit Tyton ZMU Pipe + Tyton Vi gasket



Tyton Vi gasket for Tyton Pipes and Fittings



Lubricating paste - BLUPAM



Lubricating paste - NATURAL, INTEGRAL, and PLUVIAL ranges

The information on this sketch is, to the best of our knowledge correct at the time of printing. However Saint-Gobain are constantly looking at ways of improving their products and services therefore reserve the right to change without prior notice, any of the data shown. Any orders placed will be subject to our Standard Conditions of Sale, available on request.