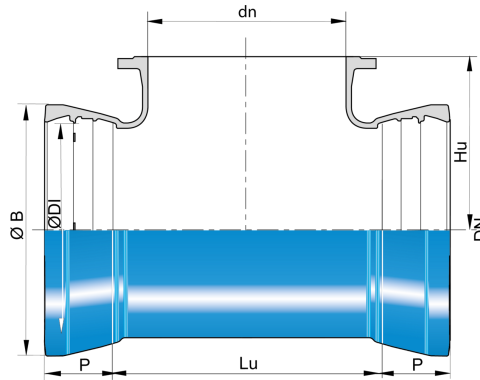


Tee (PECB) with 2 sockets UNIVERSAL STANDARD and Fixed Flange branch



							PN 10		PN 16	
DN (mm)	Ødn (mm)	Lu (mm)	Hu (mm)	P (mm)	ØDI (mm)	ØB (mm)	Mass (kg)	References	Mass (kg)	References
800	800	1015	675	261	845.8	983.8	866.00	SFB80TD1TTT		
1400	1400	1950	1100	330	1468.5	1650.1	3056.00	SFC14TD1CTT	3104.00	SFC14TD2CTT

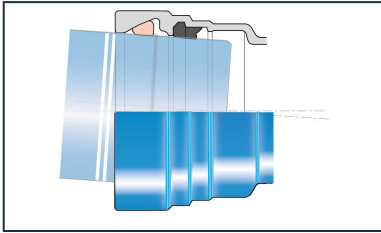
Field of use:

- To use under high to very high pressures

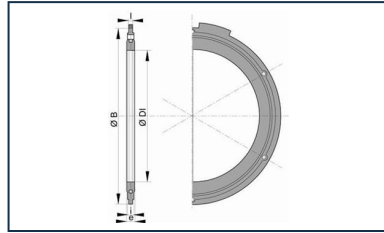
Main characteristics:

- External and internal coating : Blue epoxy powder 250 microns average thickness with a minimum of 200 microns, conforming to EN 14901-1 (PECB)
- In conformity with EN 545:2010 and ISO 2531:2009

Linked products



Kit Universal Standard
Fitting PECB + Universal
Standard Ve Joint



Flanged joint with hot
galvanized steel bolts,
nuts and washers

The information on this sketch is, to the best of our knowledge correct at the time of printing. However Saint-Gobain are constantly looking at ways of improving their products and services therefore reserve the right to change without prior notice, any of the data shown. Any orders placed will be subject to our Standard Conditions of Sale, available on request.