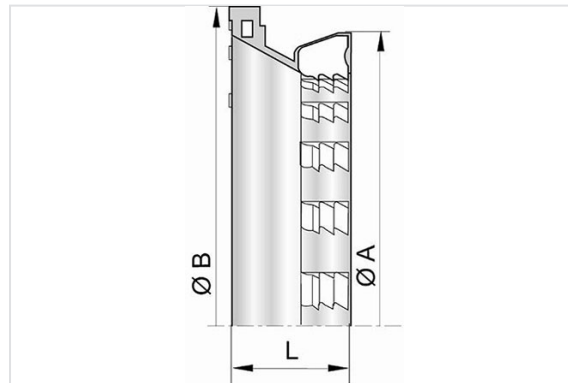


UNI Vi Locked Ring DN80-700



DN (mm)	ØB (mm)	ØA (mm)	L (mm)	Mass (kg)	References
80	130	114	33	0.15	ANA80CA6
100	150	134	33	0.20	ANB10CA6
125	176	160	33	0.26	ANB12CA6
150	202	186	33	0.31	ANB15CA5
200	253	242	38	0.49	ANB20CA4
250	304	293	38	0.61	ANB25CA4
300	357	348	39	0.78	ANB30CA4
350	418	402	42	1.47	JNB35CA
400	471	452	43	1.70	JNB40CA
450	519	503	42	1.87	JNB45CA
500	583	563	45	2.54	JNB50CA
600	677	658	42	3.00	JNB60CA
700	786	768	46.5	3.66	110053

Field of use:

- For drinking water networks used in extreme situations
- Reinforced durability

Main characteristics:

- Elastomer quality: EPDM (EN 681-1)
- Locked ring with metallic inserts Universal Vi
- EN 545
- High angular deflection possible

The information on this sketch is, to the best of our knowledge correct at the time of printing. However Saint-Gobain are constantly looking at ways of improving their products and services therefore reserve the right to change without prior notice, any of the data shown. Any orders placed will be subject to our Standard Conditions of Sale, available on request.