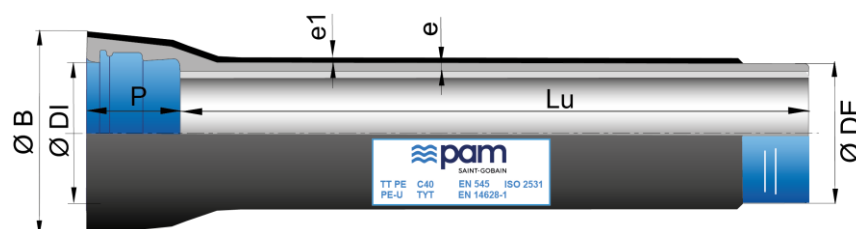


## TT PE pipes DN80 to 300 with TYTON socket (preferred pressure classes)



DN	Lu (m)	Klasse	e (mm)	e1 (mm)	ØDE (mm)	ØDI (mm)	P (mm)	ØB (mm)	Masse (kg/m)	Artikel-Nr.
80	6,00	C50	3,5	1,8	98	100,5	92,5	147	13,60	SYA80D60AG
100	6,00	C50	3,5	1,8	118	120,5	94,5	168	16,60	SYB10D60AG
125	6,00	C50	3,5	2	144	146,5	97,5	195	20,60	SYB12D60AG
150	6,00	C50	3,5	2	170	172,5	100,5	222	25,60	SYB15D60AG
200	6,00	C50	3,9	2	222	224,5	106,5	279	34,80	SYB20D60AG
250	6,00	C40	3,9	2	274	276,5	105,5	334	45,60	209805
300	6,00	C40	4,6	2,2	326	328,5	107,5	392	57,70	209806

### Legend:

- DN: nominal diameter
- Lu: laying length, in m
- Class: pressure class according to EN 545 and ISO 2531
- e: nominal thickness according to ISO 2531, in mm
- e1: thickness of polyethylene according to EN 14628-1
- ØDE: external nominal diameter of the barrel according to EN 545 and ISO 2531, in mm
- ØDI: internal nominal diameter of the socket, in mm
- P: nominal depth of the socket, in mm
- ØB: nominal diameter of the socket, in mm
- Mass: total mass per metre (including cement coating and socket), determined with the nominal thickness, in kg/m
- Reference: commercial reference Saint-Gobain PAM
- Marking sticker can be different depending on DN

## Field of use:

- **Soils characteristics:**

Ductile iron pipes coated with TT PE may be buried in contact with a large number of soils, normal and highly corrosive soils (low resistivity soil, mixed soils, polluted soils...), also in soils with occurrence of stray currents. Please refer to the informative annex D of EN545.

- **Water characteristics:**

Ductile iron pipelines supplied with lining sulfate resisting blast furnace cement mortar may be used to convey all types of water intended for human consumption in conformity with the Directive 98/83/EC.

For other types of water, the limits of use are as given in below Table. Please refer to the informative annex E of EN545.

	Minimum value	Maximum value			
Parameter	pH	CO2 aggressive	Sulphate	Magnesium	Ammonium
Unit	-	mg/l	mg/l	mg/l	mg/l
Value	5,5	15	3000	500	30

## Main characteristics:

- Pressure class in conformity with Standard EN 545-2010 and ISO 2531-2009
- External coating with 2 barriers, in accordance with EN14628-1:2020 (option PE-G):
  - Back barrier: a metallic layer of ZnAl(Cu) 85/15 alloy (mini surface density 400 g/m<sup>2</sup>) applied by spraying molten metal on to the surface of the ductile iron + finishing acrylic layer (Aquacoat)
  - Front barrier: a continuous thick organic layer of extruded PE + hot melt adhesive layer applied on the back barrier, standard thickness according to DN (table 2 of EN14628-1)
- Internal coating: sulfate resisting blast furnace cement mortar
- EPDM rubber gasket suitable for contact with drinking water (ACS, KTW, WRAS,...)
- Restraining possible with Tyton sit plus gasket (without bolts)

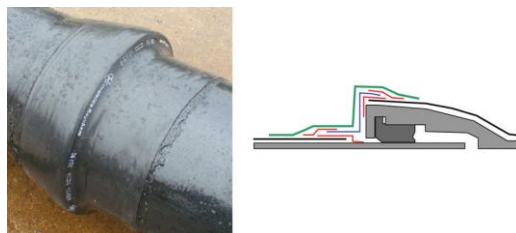
## Linked products



[Lubricating paste - BLUPAM](#)



[Lubricating paste - NATURAL...](#)



[Assembly of the aluminium s...](#)