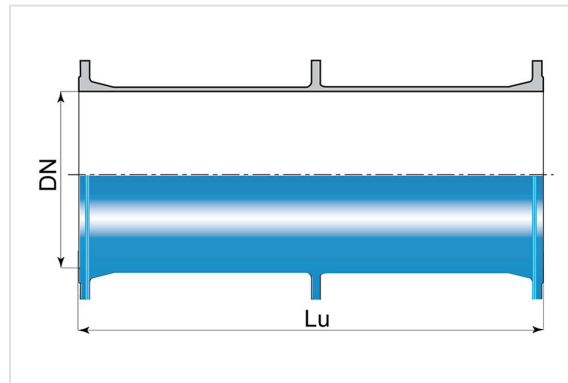


Cast Double Flanged piece with Anchor flange (central puddle flange)



DN	Lu (mm)	PN 10		PN 16		PN 25	
		Mass (kg)	References	Mass (kg)	References	Mass (kg)	References
100	1000	34.10	BBB10MD1CTT	34.10	BBB10MD1CTT		
150	500			26.00	BBB15MD1BTT		
150	1000	54.90	BBB15MD1CTT	54.90	BBB15MD1CTT	49.50	BBB15MD4CTT
200	1000	61.40	BBB20MD1CTT	78.20	BBB20MD2CTT		
250	1000					114.30	BBB25MD3CTT
300	500	89.00	BBB30MD1BTT	89.00	BBB30MD2BTT		
300	1000	134.00	BBB30MD1CTT	135.00	BBB30MD2CTT		
350	1000	168.00	BBB35MD1CTT				
400	500			128.00	BBB40MD2BTT		
400	1000	192.00	BBB40MD1CTT	202.00	BBB40MD2CTT		
500	1000	254.00	BBB50MD1CTT	261.80	BBB50MD2CTT	319.00	BBB50MD3CTT
600	1000	365.00	BBB60MD1CTT	401.00	BBB60MD2CTT		
700	1000	504.00	BBB70MD1CTT			564.00	BBB70MD3CTT
700	2000	808.00	BBB70MD1ETT	841.00	BBB70MD2ETT		
800	1500	858.00	BBB80MD1DTT	847.00	BBB80MD2DTT	943.00	BBB80MD3DTT
1000	1000			895.00	BBC10MD2CTT	1111.00	BBC10MD3CTT
1400	1000	1432.00	BBC14MD1CTT				
1400	2000	2377.00	BBC14MD1ETT	2465.00	BBC14MD2ETT		
1500	2000	2610.00	BBC15MD1ETT	2810.00	BBC15MD2ETT		

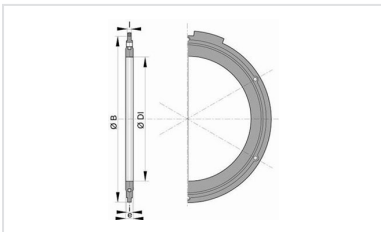
Field of use:

- For drinking water networks

Main characteristics:

- External and internal coating : Blue epoxy powder 250 microns average thickness with a minimum of 200 microns, conforming to EN 14901 (PECB)
- In conformity with EN 545:2010 and ISO 2531:2009

Linked products



Flanged joint with hot galvanized steel bolts, nuts and washers

The information on this sketch is, to the best of our knowledge correct at the time of printing. However Saint-Gobain are constantly looking at ways of improving their products and services therefore reserve the right to change without prior notice, any of the data shown. Any orders placed will be subject to our Standard Conditions of Sale, available on request.