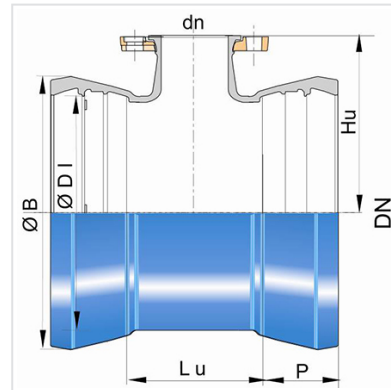
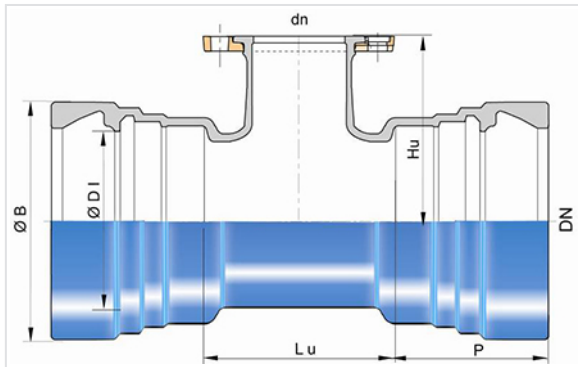


Tee (PECB) with 2 sockets UNIVERSAL STANDARD and Rotatable Flange branch



DN (mm)	Ødn (mm)	Lu (mm)	Hu (mm)	P (mm)	ØDI (mm)	ØB (mm)	PN 10		PN 16		PN 25		PN 40	
							Mass (kg)	References	Mass (kg)	References	Mass (kg)	References	Mass (kg)	References
100	80	170	175	142	121.4	177	21.20	SFB10UD1ETT	21.20	SFB10UD1ETT	21.20	SFB10UD1ETT	21.20	SFB10UD1ETT
100	100	190	180	142	121.4	177	22.50	SFB10UD1FTT	22.50	SFB10UD1FTT	23.00	SFB10UD3FTT	23.00	SFB10UD3FTT
125	100	195	195	148	147.4	201.4	21.50	SFB12UD1FTT	21.50	SFB12UD1FTT				
150	100	195	210	150	173.4	230	31.40	SFB15UD1FTT	31.40	SFB15UD1FTT				
150	150	255	220	150	173.4	230	36.40	SFB15UD1JTT	36.40	SFB15UD1JTT				
200	80	175	235	158	225.5	290	42.90	SFB20UD1ETT	42.90	SFB20UD1ETT	42.90	SFB20UD1ETT	42.90	SFB20UD1ETT
200	100	200	240	158	225.5	290	45.00	SFB20UD1FTT	45.00	SFB20UD1FTT	45.50	SFB20UD3FTT	45.50	SFB20UD3FTT
200	200	315	260	158	225.5	290			57.00	SFB20UD2KTT				
250	80	180	265	166	276.8	347	56.60	SFB25UD1ETT	56.60	SFB25UD1ETT	56.60	SFB25UD1ETT	56.60	SFB25UD1ETT
250	250	375	300	166	276.8	347	80.60	SFB25UD1LTT	80.20	SFB25UD2LTT				
250	200	315	290	166	276.8	347			72.30	SFB25UD2KTT			74.20	SFB25UD4KTT
250	100	200	270	166	276.8	347					59.24	SFB25UD3FTT	59.24	SFB25UD3FTT
300	80	180	295	178	328.8	406	69.50	SFB30UD1ETT	69.50	SFB30UD1ETT	69.50	SFB30UD1ETT	69.50	SFB30UD1ETT
300	100	205	300	178	328.8	406	79.90	SFB30UD1FTT	79.90	SFB30UD1FTT	80.40	SFB30UD3FTT	80.40	SFB30UD3FTT
300	150	260	310	178	328.8	406	86.30	SFB30UD1JTT	86.30	SFB30UD1JTT				
300	200	320	320	178	328.8	406	95.50	SFB30UD1KTT	88.00	SFB30UD2KTT			97.30	SFB30UD4KTT
300	250	435	330	178	328.8	406			108.50	SFB30UD2LTT			118.20	SFB30UD4LTT
300	300	435	340	178	328.8	406			109.00	SFB30UD2MTT				
400	80	185	355	176	432	512	85.40	SFB40UD1ETT	85.40	SFB40UD1ETT	85.40	SFB40UD1ETT		
400	100	210	360	176	432	512	88.00	SFB40UD1FTT	88.00	SFB40UD1FTT	89.00	SFB40UD3FTT		
400	150	270	370	176	432	512	103.16	SFB40UD1JTT	103.16	SFB40UD1JTT	105.20	SFB40UD3JTT		

DN (mm)	Ødn (mm)	Lu (mm)	Hu (mm)	P (mm)	ØDI (mm)	ØB (mm)	PN 10		PN 16		PN 25		PN 40	
							Mass (kg)	References	Mass (kg)	References	Mass (kg)	References	Mass (kg)	References
400	300	440	400	176	432	512	138.30	SFB40UD1MTT	138.10	SFB40UD2MTT	141.70	SFB40UD3MTT		
400	400	560	420	176	432	512	174.68	SFB40UD1NTT	178.80	SFB40UD2NTT				
400	200	325	380	176	432	512			118.00	SFB40UD2KTT	119.00	SFB40UD3KTT		
500	80	215	415	200	535	626	149.70	SFB50UD1ETT	149.70	SFB50UD1ETT	149.70	SFB50UD1ETT		
500	100	215	420	200	535	626	147.00	SFB50UD1FTT	147.00	SFB50UD1FTT	148.00	SFB50UD3FTT		
500	150	330	430	200	535	626	166.00	SFB50UD1JTT	166.00	SFB50UD1JTT	167.10	SFB50UD3JTT		
500	200	330	440	200	535	626	180.00	SFB50UD1KTT	179.90	SFB50UD2KTT				
500	300	450	470	200	535	626	197.30	SFB50UD1MTT	196.60	SFB50UD2MTT				
500	500	680	500	200	535	626	350.00	SFB50UD1QTT	363.00	SFB50UD2QTT	369.00	SFB50UD3QTT		
500	250	450	450	200	535	626			197.20	SFB50UD2LTT				
500	400	565	480	200	535	626			231.80	SFB50UD2NTT				
600	100	340	480	209	638	742	227.80	SFB60UD1FTT	227.80	SFB60UD1FTT	229.00	SFB60UD3FTT		
600	150	340	490	209	638	742	229.16	SFB60UD1JTT	229.16	SFB60UD1JTT	231.20	SFB60UD3JTT		
600	200	340	500	209	638	742	237.00	SFB60UD1KTT	237.00	SFB60UD2KTT				
600	300	570	520	209	638	742	295.00	SFB60UD1MTT	295.00	SFB60UD2MTT				
600	600	800	580	209	638	742	385.00	SFB60UD1RTT	410.00	SFB60UD2RTT				
600	250	570	510	209	638	742			284.20	SFB60UD2LTT				
600	400	570	540	209	638	742			306.80	SFB60UD2NTT				
700	150	365	520	256	740.5	857	403.00	SFB70UD1JTT	403.00	SFB70UD1JTT	405.00	SFB70UD3JTT		
700	200	365	525	256	740.5	857	427.90	SFB70UD1KTT	428.10	SFB70UD2KTT	429.38	SFB70UD3KTT		
700	300	585	530	256	740.5	857	511.00	SFB70UD1MTT	510.00	SFB70UD2MTT	512.00	SFB70UD3MTT		
700	400	585	555	256	740.5	857	566.00	SFB70UD1NTT	570.00	SFB70UD2NTT	579.00	SFB70UD3NTT		
800	200	355	585	261	845.8	983.8	530.00	SFB80UD1KTT	530.00	SFB80UD2KTT	531.00	SFB80UD3KTT		
800	400	580	615	261	845.8	983.8	657.00	SFB80UD1NTT						
800	600	1015	645.8	261	845.8	983.8	820.00	SFB80UD1RTT	878.00	SFB80UD2RTT	848.00	SFB80UD3RTT		
900	600	1145	705	275	948.9	1093	1180.00	SFB90UD1RTT	1205.00	SFB90UD2RTT	1208.00	SFB90UD3RTT		
1000	600	1265	765	272.5	1052	1216	1422.00	SFC10UD1RTT	1404.00	SFC10UD2RTT	1407.00	SFC10UD3RTT		
1200	200	822.5	880	279.5	1260	1419.6	1421.00	SFC12UD1KTT	1421.00	SFC12UD2KTT	1422.00	SFC12UD3KTT		
1200	300	822.5	838	279.5	1260	1419.6	1428.00	SFC12UD1MTT	1428.00	SFC12UD2MTT	1431.00	SFC12UD3MTT		
1200	400	822.5	835	279.5	1260	1419.6	1453.00	SFC12UD1NTT	1457.00	SFC12UD2NTT	1466.00	SFC12UD3NTT		
1200	600	840	885	279.5	1260	1419.6	1485.00	SFC12UD1RTT	1510.00	SFC12UD2RTT	1513.00	SFC12UD3RTT		
1200	250	822.5	873	279.5	1260	1419.6	1423.00	SFC12UV1LTT	1423.00	SFC12UV2LTT	1426.00	SFC12UV3LTT		
1400	600	1010	980	330	1468.5	1650.1	2106.00	SFC14UD1RTT						

(*): please contact us

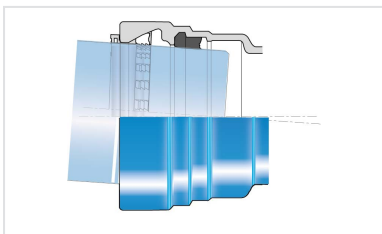
Field of use:

- To use under high to very high pressures

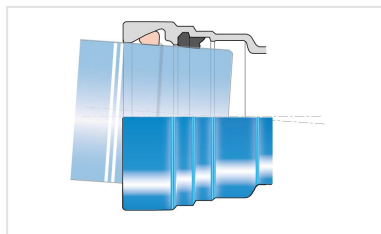
Main characteristics:

- External and internal coating : Blue epoxy powder 250 microns average thickness with a minimum of 200 microns, conforming to EN 14901-1 (PECB)
- In conformity with EN 545:2010 and ISO 2531:2009

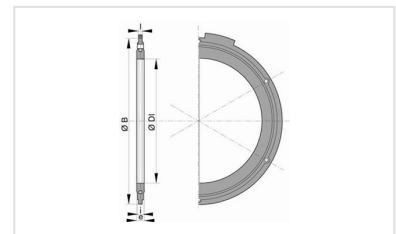
Linked products



Kit Universal Standard Fitting PECB + Universal Standard Vi Joint



Kit Universal Standard Fitting PECB + Universal Standard Ve Joint



Flanged joint with hot galvanized steel bolts, nuts and washers

The information on this sketch is, to the best of our knowledge correct at the time of printing. However Saint-Gobain are constantly looking at ways of improving their products and services therefore reserve the right to change without prior notice, any of the data shown. Any orders placed will be subject to our Standard Conditions of Sale, available on request.