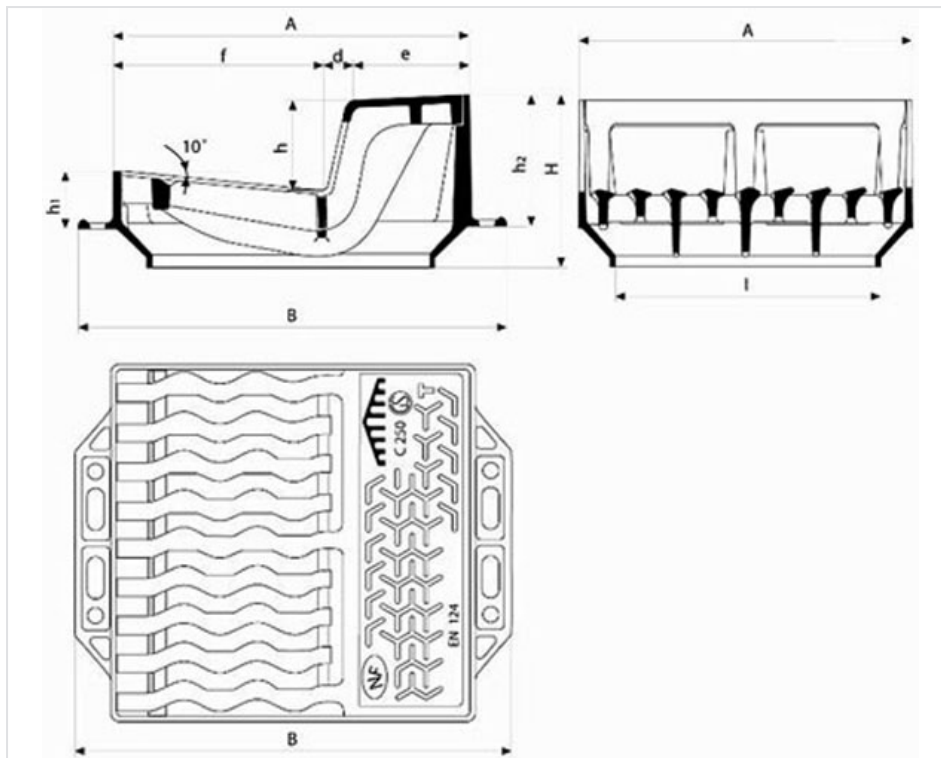


**Gully grating AT - Profile T (1) - C250 class**



AxA (mm)	B (mm)	d (mm)	e (mm)	f (mm)	l (mm)	H (mm)	h (mm)	h1 (mm)	h2 (mm)	Waterway area	Total mass (kg)	Grating mass (kg)	Packaging	References
500x500	605	30	170	300	405	233	140	77	187	10.12 dm <sup>2</sup>	61.60	32	10	ECGA60TF

Holes dimensions: width: 28 mm length: 45 ≤ L ≤ 206 mm





## Material and coating:

- Inlet grating in Ductile Iron EN GJS 400-15: water base

## Origine France Garantie

- This product is made in France in our foundry in Blénod-les-Pont-A-Mousson (54), and is certified Origine France Garantie. This guarantees consumers that the product is made in France in accordance with specifications available on [originefrancegarantie.fr](http://originefrancegarantie.fr). The certification number is: BVCert 6026906.
- *"Origine France Garantie certification is awarded by an independent certification body. Checks are then carried out every year to ensure that the product is indeed 100% made in France and that at least 50% of the product's manufacturing costs (including raw materials) are of French origin".*

## Field of application:

- C250 class (Group 3) according to standard EN 124-2, destined to the circulated pavements and similar locations exposed to the access of vehicles.
- Channelled punctual collection.
- The inlet gratings are fitted on small-gully pots (500 mm).

## Main characteristics:

- AT = Total Absorption design: The profile of the wave-shaped bars improves the conditions of absorption by ensuring the fractionation of the water blade.
- The grating's profile is specially designed to prevent obstruction by leaves or other debris whilst allowing the maximum drainage.

*The information on this sketch is, to the best of our knowledge correct at the time of printing. However Saint-Gobain are constantly looking at ways of improving their products and services therefore reserve the right to change without prior notice, any of the data shown. Any orders placed will be subject to our Standard Conditions of Sale, available on request.*