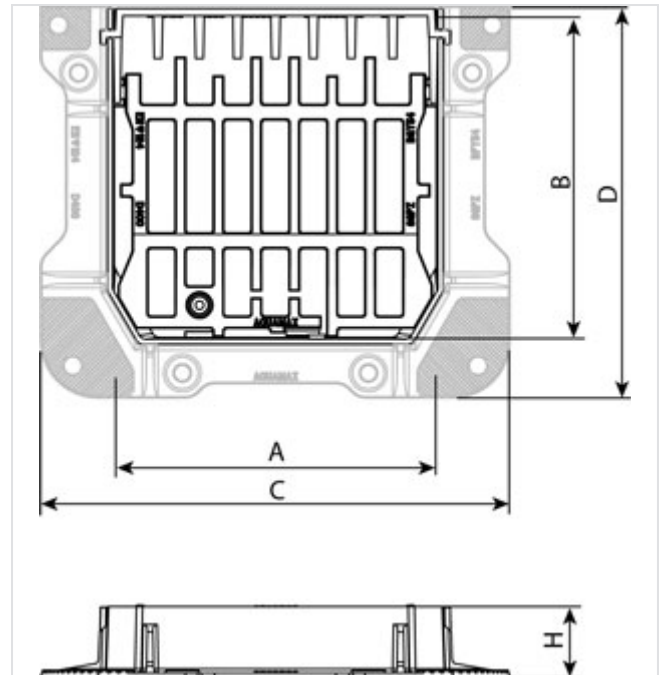
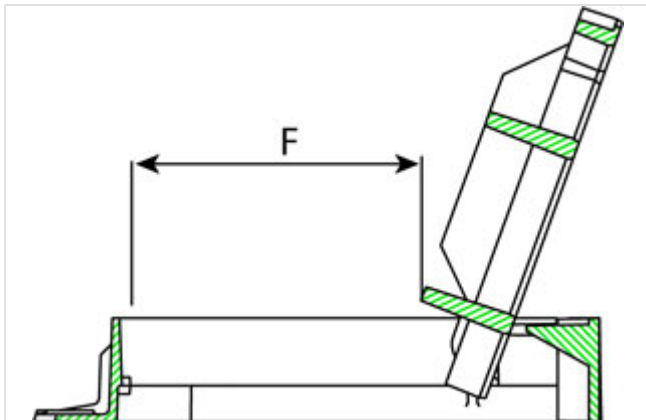




Grating AQUA-MAX Square frame D400 class



CxD (mm)	AxB (mm)	F (mm)	H (mm)	Total Mass (kg)	Waterway area	Packaging	References
660x550	450x450	280	100	45.40	12.4 dm ²	12	205864
660x550	450x450	280	150	48.80	12.4 dm ²	9	205865





Material and coating

- Frame and grating in Ductile Iron EN GJS 400-15: water base

Field of application

- D400 class (Group 4) according to standard EN124
- Multidirectional punctual or kerbside collection

Main characteristics

- Captive hinged grating
- Non-rock design
- Single-piece grating
- LTS installation and durability features
- Automatic grating security locking
- Wedge seating
- HA 104/2 compliant
- Sewers for Adoption 6 compliant

Security

- Options: additional security locking option

The information on this sketch is, to the best of our knowledge correct at the time of printing. However Saint-Gobain are constantly looking at ways of improving their products and services therefore reserve the right to change without prior notice, any of the data shown. Any orders placed will be subject to our Standard Conditions of Sale, available on request.