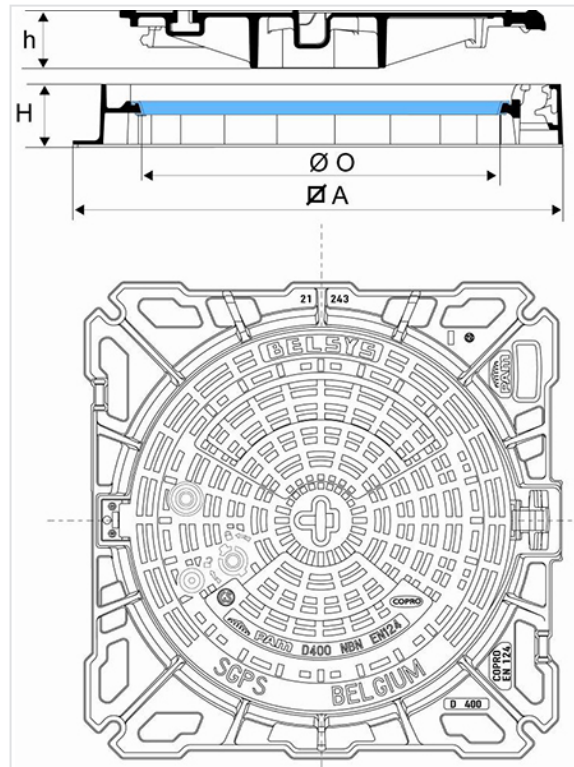


Manhole Cover BELSYS 600 Safety Class D400 Square frame - Non Ventilated



| AxA (mm) | O (mm) | H (mm) | h (mm) | Total Mass (kg) | Cover mass (kg) | Packaging | Type | References |
|----------|--------|--------|--------|-----------------|-----------------|-----------|----------|------------|
| 841x841 | 606 | 104 | 96 | 70.30 | 38 | 10 | Standard | CDBE60MC |

Material and coating:

- Frame and cover in Ductile Iron EN GJS 400-15: water base coating
- [Ring in PEPP](#)

Field of application:

- D400 class (Group 4) according to standard EN124-2, carriageways of roads, hard shoulders and parking areas for all types of road vehicles.
- Heavy traffic zones and frequent visits.



Main characteristics:

- [Automatic locking by ductile iron spring bar](#)
- Hinged cover, opens to 130 °, blocks at 90° when closing
- Frame fitted for optimized bedding

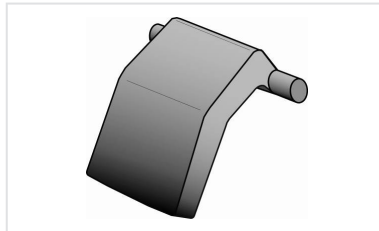
Security

- Kit lock type D50 (reference C47)
- Locking key for lock type D50 (reference C46)
- [Anti-theft spline](#)

Linked products



EVA ring



Cover anti-theft spine for
Manhole cover KOREX 600
and BELSYS 600

The information on this sketch is, to the best of our knowledge correct at the time of printing. However Saint-Gobain are constantly looking at ways of improving their products and services therefore reserve the right to change without prior notice, any of the data shown. Any orders placed will be subject to our Standard Conditions of Sale, available on request.