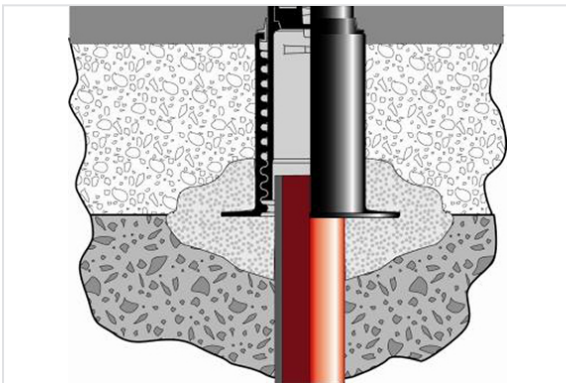


Installation - Surface box PAVA

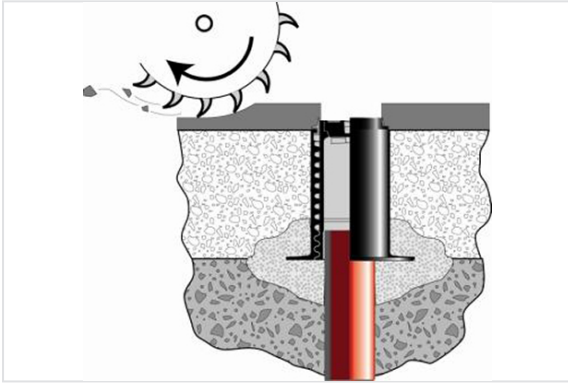


Initial installation:

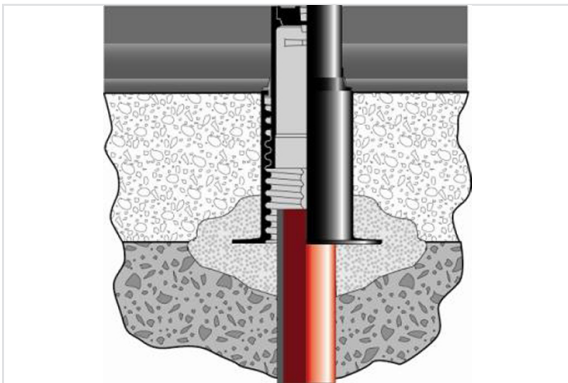


- Compact at support level.
- Cut the tube lengthening-piece.
- Clean well the tube lengthening-piece until the operating nut.
- Level.
- Maintain in place with concrete, cement or similar sand-gravel mix.
- It is recommended to install the surface box as delivered without using its extension.

Roadway repair work:



- Screw the head to release the necessary space with the passage of surfacing mill.



- Check the report of cleanliness of the tube lengthening-piece until the operating nut.
- Regulate in height by unscrewing of the head.

Extension: rotation of the head counter-clockwise

PAVA 10 and 14 = 20 mm by tour

PAVA 19 = 40 mm by tour

The information on this sketch is, to the best of our knowledge correct at the time of printing. However Saint-Gobain are constantly looking at ways of improving their products and services therefore reserve the right to change without prior notice, any of the data shown. Any orders placed will be subject to our Standard Conditions of Sale, available on request.