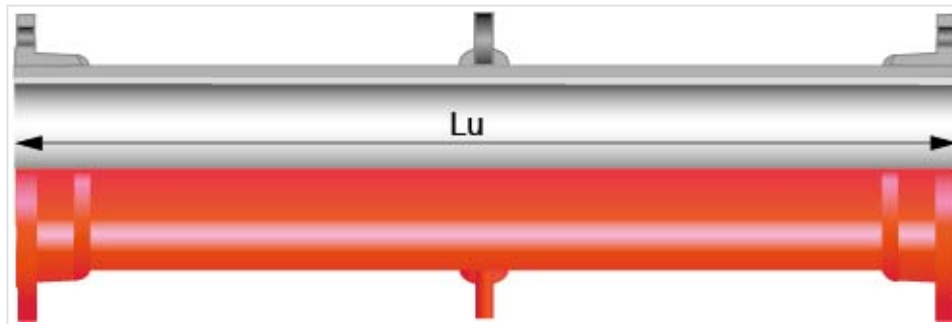
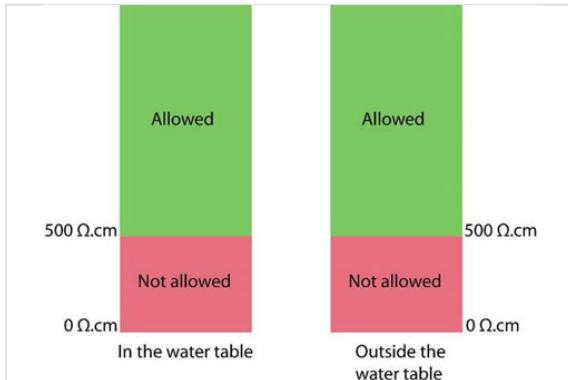


Welded Flanged Pipe with puddle flange (in the middle)



| DN | Lu (mm) | PN 10 | | PN 16 | |
|-----|---------|-----------|-------------|-----------|-------------|
| | | Mass (kg) | References | Mass (kg) | References |
| 150 | 1000 | 47 | BBB15FD1CBP | 47 | BBB15FD1CBP |

Field of use:

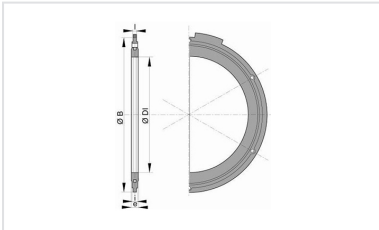


- Separate sewer system and combined sewer system
- Application: gravity flow and rising main sewerage systems
- Type of effluent: domestic wastewater and rainwater
- Perfectly watertight
- For effluents between pH4 and pH12
- For the soils with $6 < \text{pH} < 9$
- Majority of the soils, except the acid peaty and polluted soils
- Suitable for clay soils
- Resistivity of the soils: please refer to above drawing

Main characteristics:

- External coating BioZinalium: a layer of zinc-aluminium alloy enriched with copper Zn85Al15 (Cu), with surface density of 400 g/m² covered with a protective red (RAL 3011) layer AQUACOAT 80 µm (mini average), without VOC and without BPA.
- Internal lining: aluminous cement mortar CALCOAT
- EN 598 / CE Marking
- NF Mark
- Declaration of performances [DoP-INTEGRAL005EN](#)
- Designed in accordance with applicable regulations:
 - NF EN 476: general stipulations regarding components used in systems
 - NF EN 752: design of sewerage projects
 - NF EN 1610: acceptance of structures

Linked products



Flanged joint with hot galvanized steel bolts, nuts and washers for sewage

The information on this sketch is, to the best of our knowledge correct at the time of printing. However Saint-Gobain are constantly looking at ways of improving their products and services therefore reserve the right to change without prior notice, any of the data shown. Any orders placed will be subject to our Standard Conditions of Sale, available on request.