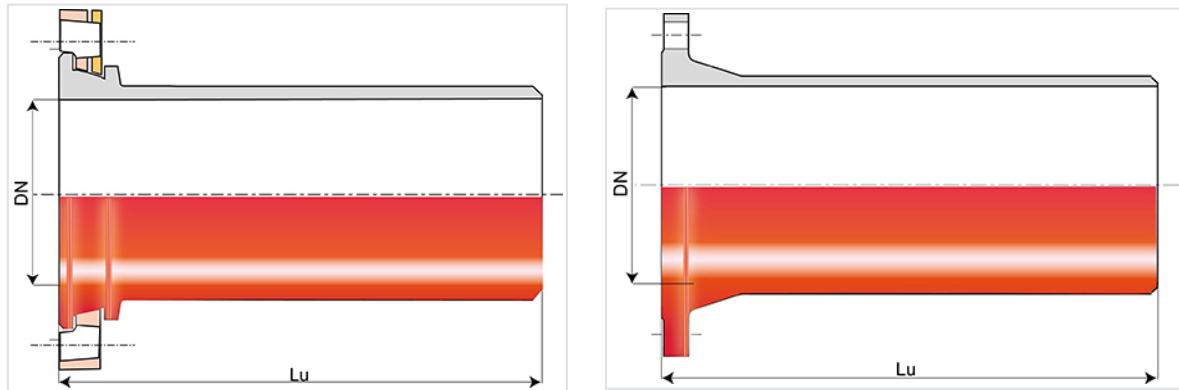


Flange Spigot INTEGRAL with Rotatable Flange or Fixed Flange



DN (mm)	Lu (mm)	PN 10	
		Mass (kg)	References
100	350	9.70	TEB10BU1
125	350	12.50	TEB12BU1
150	400	15.80	TEB15BU1
200	400	23.00	TEB20BU1
250	400	32.00	TEB25BU1
300	450	43.00	TEB30BU1
350	450	59.30	TEB35BU1
400	480	69.70	TEB40BU1
500	520	104.00	TEB50BU1
600	600	162.00	TEB60BU1
700	600	189.00	TEB70BU1
800	600	234.00	TEB80BU1
900	600	287.00	TEB90BU1
1000	600	354.00	TEC10BU1
1100	600	400.00	SEC11BU10FF
1200	600	469.00	SEC12BU10FF
1400	710	674.00	SSC14BU10FF
1500	750	802.00	SSC15BU10FF
1600	780	935.00	SSC16BU10FF
1800	845	1256.00	SSC18BU10FF
2000	885	1643.00	SSC20BU10FF

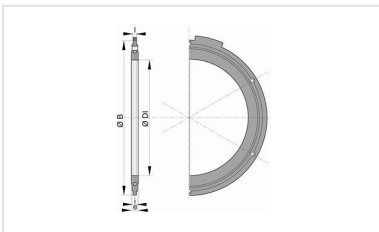
Field of use:

- Separate sewer system and combined sewer system
- Application: gravity flow and rising main sewerage systems
- Type of effluent: domestic wastewater and rainwater
- For networks with rising main under pressure
- For effluents between pH1 and pH13

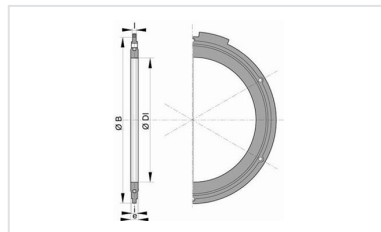
Main characteristics:

- External and internal coating: red epoxy powder 250µm (PECR)
- EN 598 / CE Marking
- Declaration of performances [DoP-INTEGRAL005EN](#)
- Designed according to the regulatory texts:
 - NF EN 476: general prescriptions for components used in the networks
 - NF EN 752: Conception of sewage projects
 - NF EN 1610: Reception of the works
 - CCTG: Fascicule 70 (sewage work)

Linked products



Flanged joint with hot galvanized steel bolts, nuts and washers for sewage



Flanged joint with hot galvanized steel bolts, nuts and washers

The information on this sketch is, to the best of our knowledge correct at the time of printing. However Saint-Gobain are constantly looking at ways of improving their products and services therefore reserve the right to change without prior notice, any of the data shown. Any orders placed will be subject to our Standard Conditions of Sale, available on request.