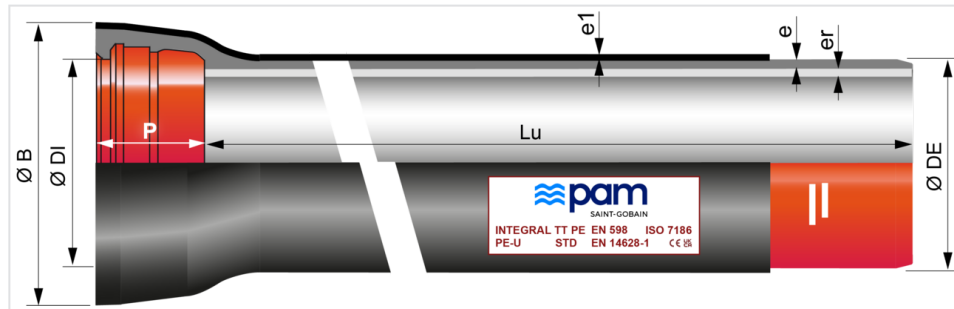


INTEGRAL TT PE pipes DN150 to 1000 with STANDARD socket



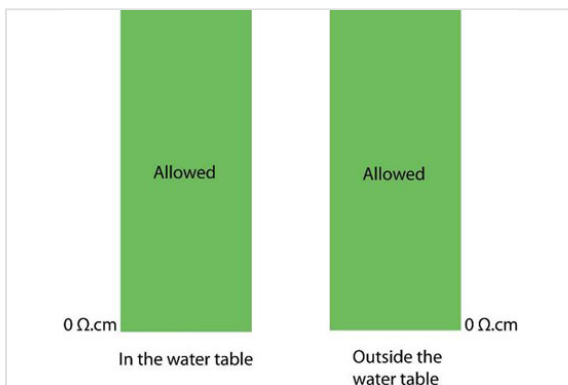
DN	Lu (m)	e (mm)	er (mm)	e1 (mm)	ØDE (mm)	ØDI (mm)	P (mm)	ØB (mm)	Mass (kg/m)	PFA	References
150	6.00	5	4	2	170	173.4	100.5	222	24.80	40 bar	TSB15S60BG
200	6.00	5.1	4	2	222	225.2	106.5	279	33.30	40 bar	TSB20S60BG
250	6.00	5.3	4	2	274	276.8	105.5	334	42.60	38 bar	TSB25S60BG
300	6.00	5.6	4	2.2	326	328.8	107.5	392	53.30	35 bar	TSB30S60BG
350	6.00	6	5	2.2	378	380.9	110.5	446	69.30	32 bar	TSB35S60BG
400	6.00	6.3	5	2.2	429	431.9	112.5	499.5	81.30	30 bar	TSB40S60BG
450	6.00	6.7	5	2.2	480	483	115.5	554	95.70	29 bar	TSB45S60BG
500	6.00	7	5	2.5	532	535	117.5	608.6	111.40	28 bar	TSB50S60BG
600	6.00	7.7	5	2.5	635	638	132.5	718	141.80	26 bar	TSB60S60BG
700	6.96	9.6	6	2.5	738	741.7	192	830	211.03	29 bar	TSB70E70BG
800	6.95	10.4	6	3	842	845.8	197	935.6	258.74	28 bar	TSB80E70BG
900	6.95	11.2	6	3	945	948.9	200	1043.4	308.61	27 bar	TSB90E70BG
1000	6.96	12	6	3	1048	1052	203	1152.4	362.50	26 bar	TSC10E70BG

Legend:

- DN : nominal diameter
- Lu : laying length, in m
- e: thickness according to EN598 + A1 – August 2009, in mm
- e1: according to EN14626, in mm
- er: thickness of the cement mortar, in mm
- ØDE : external nominal diameter of the barrel according to EN598 + A1 – August 2009, in mm
- ØDI : internal nominal diameter of the socket, in mm
- P : nominal depth of the socket, in mm
- ØB : nominal diameter of the socket, in mm

- Mass : total mass per meter (including cement coating and socket), determined with the nominal thickness, in kg/m
- Reference : commercial reference Saint-Gobain PAM

Field of use:

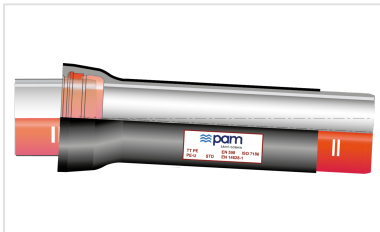


- Separate sewer system and combined sewer system
- Application: gravity flow and rising main sewerage systems
- Type of effluent: domestic wastewater and rainwater
- Perfectly watertight
- For effluents between pH4 and pH12
- Extremely corrosive soils ; storage in warm countries is not recommended
- Resistivity of the soils: see drawing

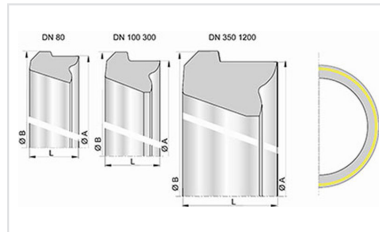
Main characteristics:

- External coating ^{Bio}Zinalium: a layer of zinc-aluminium alloy enriched with copper Zn85Al15 (Cu), with surface density of 400 g/m² covered with a protective red (RAL 3011) layer AQUACOAT 80 µm (mini average), without VOC and without BPA polyethylene according to NF EN 14628-2006 (DN80 to 500: extrusion method by tubing – DN500 to 700: extrusion method by wrapping)
- Internal lining: aluminous cement mortar CALCOAT
- Socket coating: zinc rich paint 40 µm or zinc-aluminium 200 g/m² + red AQUACOAT 160 µm (mini average)
- Spigot coating: zinc-aluminium (Cu) 400 g/m² + red AQUACOAT 160 µm (mini average)
- Standard Gasket in Nitrile
- EN 598 / CE Marking
- Declaration of performances [DoP-INTEGRAL005EN](#)
- Designed in accordance with applicable regulations:
 - NF EN 476: general stipulations regarding components used in systems
 - NF EN 752: design of sewerage projects
 - NF EN 1610: acceptance of structures

Linked products



Kit INTEGRAL Standard TT
PE-C Pipe + Standard
Gasket



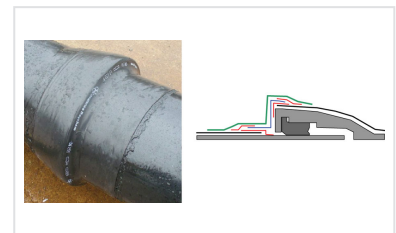
Nitrile STD Gasket
DN80-2000



Lubricating paste -
BLUPAM



Lubricating paste -
NATURAL, INTEGRAL, and
PLUVIAL ranges



Assembly of the aluminium
sleeve on TT pipes

The information on this sketch is, to the best of our knowledge correct at the time of printing. However Saint-Gobain are constantly looking at ways of improving their products and services therefore reserve the right to change without prior notice, any of the data shown. Any orders placed will be subject to our Standard Conditions of Sale, available on request.