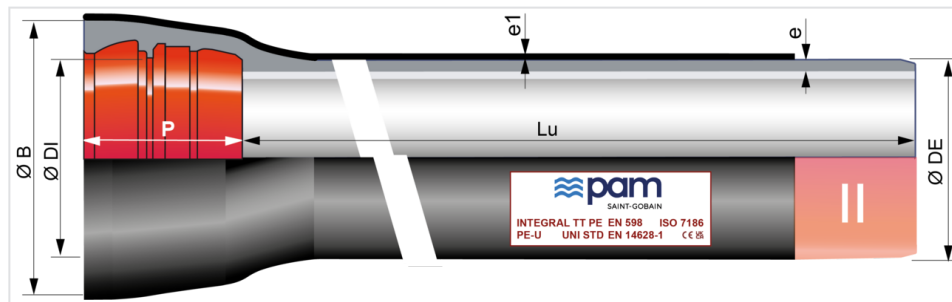


## INTEGRAL TT PE pipes DN150 to 700 with UNIVERSAL STANDARD socket

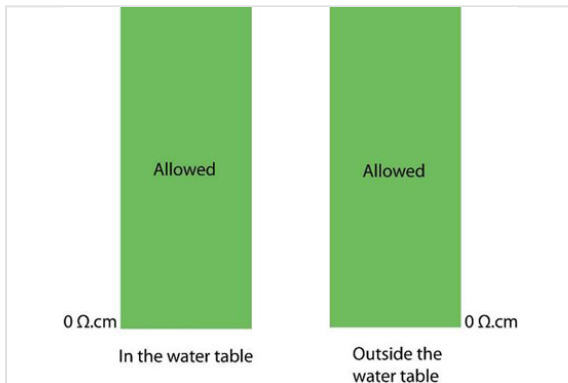


DN	Lu (m)	e (mm)	e1 (mm)	ØDE (mm)	ØDI (mm)	P (mm)	ØB (mm)	Mass (kg/m)	PFA	References
150	5.97	6.2	2	170	173.4	148	230	29.90	48 bar	TGB15N60BG
200	5.97	6.5	2	222	225.2	155	290	41.30	43 bar	TGB20N60BG
250	5.97	6.8	2	274	276.8	166	350	53.80	39 bar	TGB25N60BG
300	5.97	7.4	2.2	326	328.8	180	408	69.50	34 bar	TGB30N60BG
450	5.97	8.6	2.2	480	483	190	570	120.40	16 bar	TGB45F60BG
500	5.97	9.3	2.5	532	535	200	625	143.00	16 bar	TGB50N60BG
600	5.97	10.9	2.5	635	638.2	209	740	192.90	16 bar	TGB60N60BG
700	6.90	10.8	2.5	738	741.7	250	855	239.48	10 bar	TGB70N70BG

### Legend:

- DN : nominal diameter
- Lu : laying length, in m
- e: thickness according to EN598 + A1 – August 2009, in mm
- e1: according to EN14626, in mm
- er: thickness of the cement mortar, in mm
- ØDE : external nominal diameter of the barrel according to EN598 + A1 – August 2009, in mm
- ØDI : internal nominal diameter of the socket, in mm
- P : nominal depth of the socket, in mm
- ØB : nominal diameter of the socket, in mm
- Mass : total mass per meter (including cement coating and socket), determined with the nominal thickness, in kg/m
- Reference : commercial reference Saint-Gobain PAM

## Field of use:

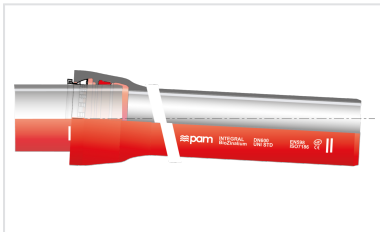


- Separate sewer system and combined sewer system
- Application: gravity flow and rising main sewerage systems
- Type of effluent: domestic wastewater and rainwater
- Perfectly watertight
- For effluents between pH4 and pH12
- Extremely corrosive soils ; storage in warm countries is not recommended
- Resistivity of the soils: see drawing

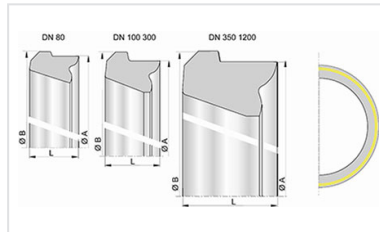
## Main characteristics:

- External coating <sup>Bio</sup>Zinalium: a layer of zinc-aluminium alloy enriched with copper Zn85Al15 (Cu), with surface density of 400 g/m<sup>2</sup> covered with a protective red (RAL 3011) layer AQUACOAT 80 µm (mini average), without VOC and without BPA polyethylene according to NF EN 14628-2006 (DN80 to 500: extrusion method by tubing – DN500 to 700: extrusion method by wrapping)
- Internal lining: aluminous cement mortar CALCOAT
- Socket coating: zinc rich paint 40 µm or zinc-aluminium 200 g/m<sup>2</sup> + red AQUACOAT 160 µm (mini average)
- Spigot coating: zinc-aluminium (Cu) 400 g/m<sup>2</sup> + red AQUACOAT 160 µm (mini average)
- Standard Gasket in Nitrile
- EN 598 / CE Marking
- Declaration of performances [DoP-INTEGRAL005EN](#)
- Designed in accordance with applicable regulations:
  - NF EN 476: general stipulations regarding components used in systems
  - NF EN 752: design of sewerage projects
  - NF EN 1610: acceptance of structures

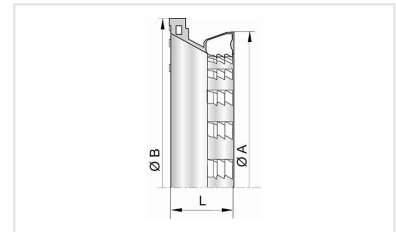
**Linked products**



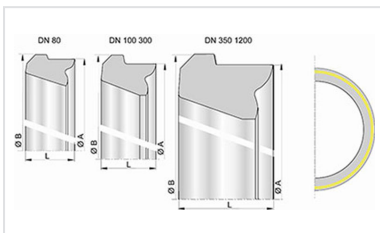
Kit Universal Standard INTEGRAL Pipe + Universal Standard Vi Joint



UNI STD Vi joint for INTEGRAL® Pipes and Fittings DN80-700



UNI Vi Locked Ring DN80-700



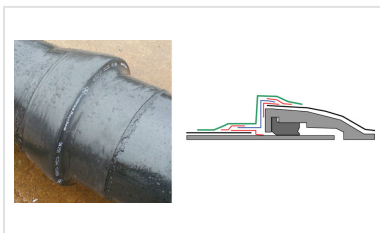
Nitrile STD Gasket DN80-2000



Lubricating paste - BLUPAM



Lubricating paste - NATURAL, INTEGRAL, and PLUVIAL ranges



Assembly of the aluminium sleeve on TT pipes

*The information on this sketch is, to the best of our knowledge correct at the time of printing. However Saint-Gobain are constantly looking at ways of improving their products and services therefore reserve the right to change without prior notice, any of the data shown. Any orders placed will be subject to our Standard Conditions of Sale, available on request.*