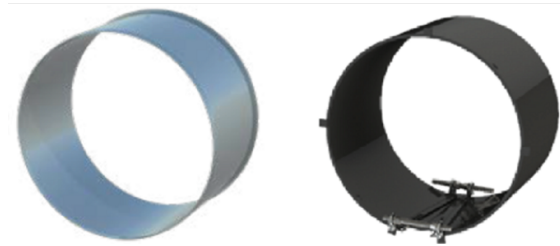


RFLEX – Reinforcement rings for PE and PVC pipes

Modèle INS
DE63-DE315

Modèle CAN
DE355-DE1600



Reinforcement rings must be used on PE and PVC pressure pipes when installing RFLEX mechanical locking fittings. They reinforce the strength of plastic pipes in the locking area.

Two models are available:

- Model INS DE63-DE315: Stainless steel, insertion into the pipe, no tolerance
- Model CAN DE355-DE1600: RILSAN-coated carbon steel, insertion into the pipe and adjustment via the wedge, tolerance according to the wedge used.

The reinforcement rings are available according to the standardized dimensional ratio (SDR) of PE pipes. PVC pressure pipes are compatible provided that the dimensions indicated in the tables on the following pages correspond.

Please note: SG PAM CANALISATION cannot be held responsible for any interpretation of this document. It is the responsibility of the installation company to check the suitability of the materials and to strictly comply with the installation recommendations.

ØDE (mm)	SDR 11				SDR 17			
	ØDI (mm)	L (mm)	Mass (kg)	References	ØDI (mm)	L (mm)	Mass (kg)	References
63	51.4	175	0.10	292661	55.4	175	0.30	292682
75	61.4	175	0.30	292662	66	175	0.10	292683
90	73.6	175	0.30	292663	79.2	175	0.30	292684
110	90	175	0.40	292664	96.8	175	0.40	292685
125	102.2	175	0.40	292665	110.2	175	0.50	292686
140	114.6	175	0.50	292666	123.4	175	0.50	292687
160	130.8	200	0.10	292667	141.1	200	1.00	292688
180	147.2	200	1.10	292668	158.6	200	1.20	292689

SDR 11					SDR 17			
ØDE (mm)	ØDI (mm)	L (mm)	Mass (kg)	References	ØDI (mm)	L (mm)	Mass (kg)	References
200	163.6	200	1.20	292669	176.2	200	1.30	292690
225	184	225	1.50	292670	197.4	225	1.30	292691
250	204.6	225	2.20	292671	221.2	225	2.40	292692
280	229.2	225	2.50	292672				
315	257.8	225	2.80	292673	277.6	225	3.00	292694

Materials and coatings



INS model

Designation	Material
Reinforcement ring	Stainless steel

See installation instructions: [RFLEX DE63-315 range reinforcement ring instructions](#)

Dimensions CAN Model

CAN model - ring for DE350-DE1600

SDR 7.4			SDR 11		SDR 17		SDR 16	
PE OD (mm)	DI Ø (mm)	Reference	DI Ø (mm)	Reference	Ø ID (mm)	Reference	Ø ID (mm)	Reference
355	258		290.6		312.8		327.8	
400	290.6		327.4		352.6		369.4	
450	327		368.2		396.6		415.6	
500	-		409.2		440.6		461.8	
560	-		458.4		493.6		517.2	
630	-		515.6		555.2		581.8	
710	-		-		625.8		655.6	

	SDR 7.4	SDR 11	SDR 17	SDR 16
800	-	-	705.2	738.8
900	-	-	793.4	831.2
1000	-	-	881.4	923.6
1200	-	-	-	1108.2
1400	-	-	-	1293
1600	-	-	-	1477.6

Length of parts: 350 mm

Materials and coatings



CAN model

Reference	Designation	Material	Coating
1	Fitting	Carbon steel	RILSAN®11
2	Sealing gasket	Carbon steel	RILSAN®11
3	Rods, nuts, and adjustment screws (removed after adjustment)	Steel 8.8	

See installation instructions: [RFLEX DE355-DE1600 range reinforcement ring instructions](#)

The information on this sketch is, to the best of our knowledge correct at the time of printing. However Saint-Gobain are constantly looking at ways of improving their products and services therefore reserve the right to change without prior notice, any of the data shown. Any orders placed will be subject to our Standard Conditions of Sale, available on request.