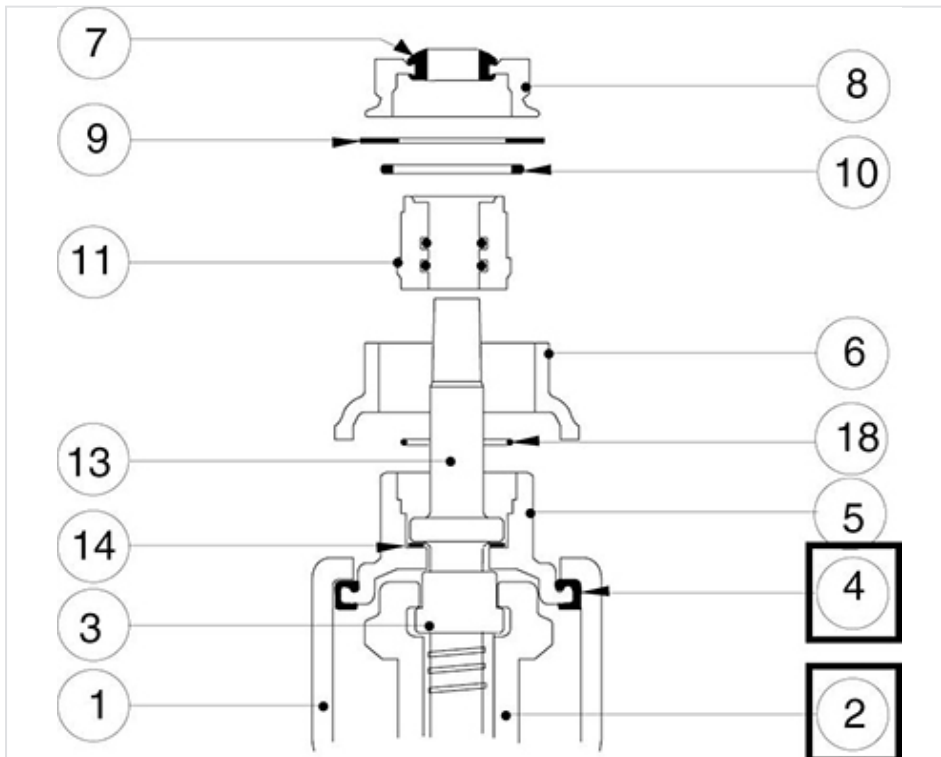


Spare parts for EURO20 NG - Gate and body bonnet gasket replacement



- Close upstream and downstream isolation valves for close the water main.
- Disassembly various accessories installed on the valve.
- Shutting the E20 valve totally.
- Loose the bearing nut 8 with the key recommended on the technical data sheet spare parts, and to entirely unscrew it.
- Remove the lock washer 9, the O'ring 10 and the Yoke 6
- Open the valve of a quarter of turn
- Unscrew the sealing bush 11 (make sure that the operating stem 13 does not turn)
- Unscrew and remove the operating stem 13
- After that the bonnet 5 falls on the gate 2.
- Extract the bonnet 5 from the body: for that make it swivel vertically on 90°, then to upwards draw it by one from its ends.(see data sheet R1 635)
- Remove body bonnet gasket 4 enclosed on the circumference of the bonnet 5
- Install the new gasket 4 on the bonnet 5.
- To make profitable the demounting of the mechanism to check the good state of the dismantled parts.

- Remove the gate 2 of the body 12 and released the operating nut 3 of the gate 2
- Install the operating nut 3 on the new gate 2 and set up gate + nut in the body
- Lubricate the operating stem 13 with alimentary fat paste.
- Proceed in direction reverses for the reassembly, and immobilize the lock washer 9 by a blow of punch at the level of the notch envisaged on the yoke 6.
- Test the tightness and the correct operation of the operating system.

The information on this sketch is, to the best of our knowledge correct at the time of printing. However Saint-Gobain are constantly looking at ways of improving their products and services therefore reserve the right to change without prior notice, any of the data shown. Any orders placed will be subject to our Standard Conditions of Sale, available on request.