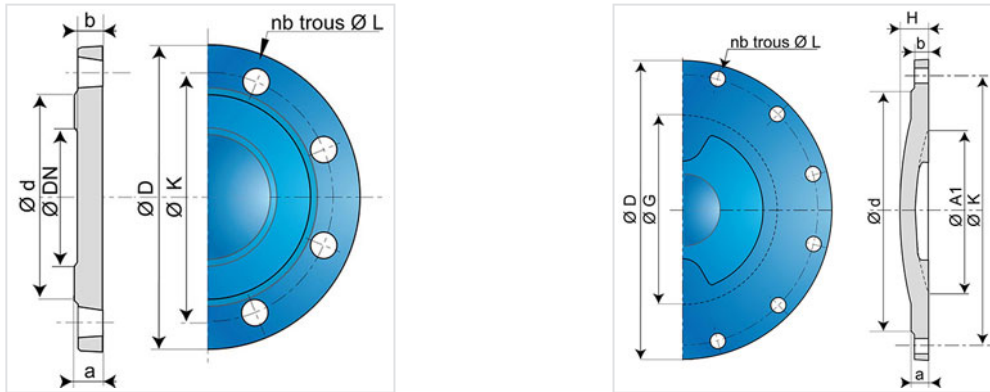


Blank Flange (PECB)



| DN (mm) | PN 10 | | PN 16 | | PN 25 | | PN 40 | |
|---------|-----------|-------------|-----------|-------------|-----------|-------------|-----------|-------------|
| | Mass (kg) | References | Mass (kg) | References | Mass (kg) | References | Mass (kg) | References |
| 40 | 2.00 | BBA40QN10TT | 2.00 | BBA40QN10TT | 2.00 | BBA40QN10TT | 2.00 | BBA40QN10TT |
| 50 | 3.00 | BBA50QN10TT | 3.00 | BBA50QN10TT | 3.00 | BBA50QN10TT | 3.00 | BBA50QN10TT |
| 60 | 2.70 | BBA60QN10TT | 2.70 | BBA60QN10TT | 2.70 | BBA60QN30TT | 2.70 | BBA60QN30TT |
| 65 | 3.10 | BBA65QN10TT | 3.10 | BBA65QN10TT | | | | |
| 80 | 3.50 | BBA80QN10TT | 3.50 | BBA80QN10TT | 3.50 | BBA80QN10TT | 3.50 | BBA80QN10TT |
| 100 | 4.30 | BBB10QN10TT | 4.30 | BBB10QN10TT | 4.80 | BBB10QN30TT | 4.80 | BBB10QN30TT |
| 125 | 5.60 | BBB12QN10TT | 5.60 | BBB12QN10TT | 6.50 | BBB12QN30TT | 6.50 | BBB12QN30TT |
| 150 | 7.20 | BBB15QN10TT | 7.20 | BBB15QN10TT | 8.50 | BBB15QN30TT | 8.50 | BBB15QN30TT |
| 200 | 11.00 | BBB20QN10TT | 13.80 | BBB20QN20TT | 13.90 | BBB20QN30TT | | |
| 250 | 16.90 | BBB25QN10TT | 16.90 | BBB25QN20TT | 22.00 | BBB25QN30TT | | |
| 300 | 26.50 | BBB30QN10TT | 26.50 | BBB30QN20TT | 33.00 | BBB30QN30TT | | |
| 350 | 32.50 | BBB35QN10TT | 37.50 | BBB35QN20TT | 47.50 | BBB35QN30TT | | |
| 400 | 45.50 | BBB40QN10TT | 43.50 | BBB40QN20TT | 63.00 | BBB40QN30TT | | |
| 450 | 58.00 | BBB45QN10TT | 64.00 | BBB45QN20TT | 80.00 | BBB45QN30TT | | |
| 500 | 70.00 | BBB50QN10TT | 84.00 | BBB50QN20TT | 101.00 | BBB50QN30TT | | |
| 600 | 106.00 | BBB60QN10TT | 133.00 | BBB60QN20TT | 156.00 | BBB60QN30TT | | |
| 700 | 153.00 | BBB70QN10TT | 166.00 | BBB70QN20TT | 221.00 | BBB70QN30TT | | |
| 800 | 214.00 | BBB80QN10TT | 230.00 | BBB80QN20TT | 311.00 | BBB80QN30TT | | |
| 900 | 279.00 | BBB90QN10TT | 300.00 | BBB90QN20TT | 405.00 | BBB90QN30TT | 620.00 | BBB90QN40TT |
| 1000 | 367.00 | BBC10QN10TT | 400.00 | BBC10QN20TT | 540.00 | BBC10QN30TT | | |
| 1100 | 405.00 | BBC11QN10TT | 520.00 | BBC11QN20TT | | | | |

| DN (mm) | PN 10 | | PN 16 | | PN 25 | | PN 40 | |
|---------|-----------|-------------|-----------|-------------|-----------|-------------|-----------|------------|
| | Mass (kg) | References | Mass (kg) | References | Mass (kg) | References | Mass (kg) | References |
| 1200 | 506.00 | BBC12QN10TT | 662.00 | BBC12QN20TT | 840.00 | BBC12QN30TT | | |
| 1400 | 847.00 | BBC14QN10TT | 993.00 | BBC14QN20TT | | | | |
| 1500 | 1027.00 | BBC15QN10TT | 1222.00 | BBC15QN20TT | | | | |
| 1600 | 1239.00 | BBC16QN10TT | 1462.00 | BBC16QN20TT | | | | |
| 1800 | 1717.00 | BBC18QN10TT | 2016.00 | BBC18QN20TT | | | | |
| 2000 | 2272.00 | BBC20QN10TT | 2660.00 | BBC20QN20TT | 3350.00 | BBC20QN30TT | | |

| DN (mm) | PN | ØD (mm) | a (mm) | b (mm) | Ød (mm) | ØG (mm) | H (mm) | Number of holes | ØL (mm) | ØK (mm) | A1 (mm) |
|---------|-------------|---------|--------|--------|---------|---------|--------|-----------------|---------|---------|---------|
| 40 | 10 16 25 40 | 150 | 19 | 16 | 84 | | | 4 | 19 | 110 | |
| 50 | 10 16 25 40 | 165 | 19 | 16 | 99 | | | 4 | 19 | 125 | |
| 60 | 10 16 | 175 | 19 | 16 | 108 | | | 4 | 19 | 135 | |
| 60 | 25 40 | 175 | 19 | 16 | 108 | | | 8 | 19 | 135 | |
| 65 | 10 16 | 185 | 19 | 16 | 118 | | | 4 | 19 | 145 | |
| 80 | 10 16 25 40 | 200 | 19 | 16 | 132 | | | 8 | 19 | 160 | |
| 100 | 10 16 | 200 | 19 | 16 | 153 | | | 8 | 19 | 180 | |
| 100 | 25 40 | 235 | 19 | 16 | 156 | | | 8 | 23 | 190 | |
| 125 | 10 16 | 250 | 19 | 16 | 184 | | | 8 | 19 | 210 | |
| 125 | 25 40 | 270 | 23.5 | 20.5 | 184 | 115 | | 8 | 28 | 220 | 105 |
| 150 | 10 16 | 285 | 19 | 16 | 211 | | | 8 | 23 | 240 | |
| 150 | 25 40 | 300 | 26 | 23 | 211 | 140 | | 8 | 28 | 250 | 140 |
| 200 | 10 | 340 | 20 | 17 | 266 | | | 8 | 23 | 295 | |
| 200 | 16 | 340 | 20 | 17 | 266 | | | 12 | 23 | 295 | |
| 200 | 25 | 360 | 22 | 19 | 274 | 190 | | 12 | 28 | 310 | 180 |
| 250 | 10 | 400 | 22 | 19 | 319 | | | 12 | 23 | 350 | |
| 250 | 16 | 400 | 22 | 19 | 319 | | | 12 | 28 | 355 | |
| 250 | 25 | 425 | 24.5 | 21.5 | 330 | 240 | | 12 | 31 | 370 | 230 |
| 300 | 10 | 455 | 24.5 | 20.5 | 370 | 290 | 40.5 | 12 | 23 | 400 | 246 |
| 300 | 16 | 455 | 24.5 | 20.5 | 370 | 290 | 40.5 | 12 | 28 | 410 | 246 |
| 300 | 25 | 485 | 27.5 | 23.5 | 389 | 290 | 53.5 | 16 | 31 | 430 | 250 |
| 350 | 10 | 505 | 24.5 | 20.5 | 429 | 340 | 50.3 | 16 | 23 | 460 | 290 |
| 350 | 16 | 520 | 26.5 | 22.5 | 429 | 340 | 52.3 | 16 | 28 | 470 | 290 |
| 350 | 25 | 555 | 30 | 26 | 448 | 335 | 61 | 16 | 34 | 490 | 300 |
| 400 | 10 | 565 | 24.5 | 20.5 | 480 | 385 | 62 | 16 | 28 | 515 | 350 |
| 400 | 16 | 580 | 28 | 24 | 480 | 385 | 64 | 16 | 31 | 525 | 350 |

| DN (mm) | PN | ØD (mm) | a (mm) | b (mm) | Ød (mm) | ØG (mm) | H (mm) | Number of holes | ØL (mm) | ØK (mm) | A1 (mm) |
|---------|----|---------|--------|--------|---------|---------|--------|-----------------|---------|---------|---------|
| 400 | 25 | 620 | 32 | 28 | 503 | 385 | 68 | 16 | 37 | 550 | 350 |
| 450 | 10 | 615 | 25.5 | 21.5 | 530 | 435 | 68.5 | 20 | 28 | 565 | 400 |
| 450 | 16 | 640 | 30 | 26 | 548 | 435 | 71 | 20 | 31 | 585 | 400 |
| 450 | 25 | 670 | 34.5 | 30.5 | 548 | 435 | 75.5 | 20 | 37 | 600 | 400 |
| 500 | 10 | 670 | 26.5 | 22.5 | 582 | 490.4 | 58 | 20 | 28 | 620 | 450 |
| 500 | 16 | 715 | 31.5 | 27.5 | 609 | 485 | 77.5 | 20 | 34 | 650 | 450 |
| 500 | 25 | 730 | 36.5 | 32.5 | 609 | 485 | 82.5 | 20 | 37 | 660 | 450 |
| 600 | 10 | 780 | 30 | 25 | 682 | 585 | 88 | 20 | 31 | 725 | 550 |
| 600 | 16 | 840 | 36 | 31 | 720 | 585 | 91 | 20 | 37 | 770 | 550 |
| 600 | 25 | 845 | 42 | 37 | 720 | 585 | 97 | 20 | 41 | 770 | 550 |
| 700 | 10 | 895 | 32.5 | 27.5 | 794 | 680 | 101 | 24 | 31 | 840 | 650 |
| 700 | 16 | 910 | 39.5 | 34.5 | 794 | 685 | 112 | 24 | 37 | 840 | 650 |
| 700 | 25 | 960 | 46.5 | 41.5 | 820 | 685 | 112 | 24 | 44 | 875 | 650 |
| 800 | 10 | 1015 | 35 | 30 | 901 | 785 | 114 | 24 | 34 | 950 | 750 |
| 800 | 16 | 1025 | 43 | 38 | 901 | 785 | 126 | 24 | 41 | 950 | 750 |
| 800 | 25 | 1085 | 51 | 46 | 928 | 785 | 126 | 24 | 50 | 990 | 750 |
| 900 | 10 | 1115 | 37.5 | 32.5 | 1001 | 885 | 127 | 28 | 34 | 1050 | 850 |
| 900 | 16 | 1125 | 46.5 | 41.5 | 1001 | 885 | 141 | 28 | 41 | 1050 | 850 |
| 900 | 25 | 1185 | 55.5 | 50.5 | 1028 | 885 | 141 | 28 | 50 | 1090 | 850 |
| 900 | 40 | | | | | | | | | | |
| 1000 | 10 | 1230 | 40 | 35 | 1112 | 985 | 140 | 28 | 37 | 1160 | 950 |
| 1000 | 16 | 1255 | 50 | 45 | 1112 | 985 | 155 | 28 | 44 | 1170 | 950 |
| 1000 | 25 | 1320 | 60 | 55 | 1140 | 985 | 155 | 28 | 57 | 1210 | 950 |
| 1100 | 10 | 1340 | 42.5 | 37.5 | 1218 | 1085 | 148 | 32 | 37 | 1270 | 1050 |
| 1100 | 16 | 1355 | 53.5 | 48.5 | 1218 | 1085 | 170 | 32 | 44 | 1270 | 1050 |
| 1200 | 10 | 1455 | 45 | 40 | 1328 | 1185 | 160 | 32 | 41 | 1380 | 1150 |
| 1200 | 16 | 1485 | 57 | 52 | 1328 | 1185 | 184 | 32 | 50 | 1390 | 1150 |
| 1200 | 25 | 1530 | 69 | 64 | 1350 | 1185 | 184 | 32 | 57 | 1420 | 1150 |
| 1400 | 10 | 1675 | 46 | 41 | 1530 | 1375 | 192 | 36 | 43 | 1590 | |
| 1400 | 16 | 1685 | 60 | 55 | 1530 | 1342 | 199 | 36 | 50 | 1590 | |
| 1500 | 10 | 1785 | 47.5 | 42.5 | 1640 | 1475 | 205 | 36 | 43 | 1700 | |
| 1500 | 16 | 1820 | 62.5 | 57.5 | 1640 | 1441 | 212.5 | 36 | 56 | 1710 | |
| 1600 | 10 | 1915 | 49 | 44 | 1750 | 1575 | 218 | 40 | 50 | 1820 | |
| 1600 | 16 | 1930 | 65 | 60 | 1750 | 1540 | 266 | 40 | 57 | 1820 | |

| DN (mm) | PN | ØD (mm) | a (mm) | b (mm) | Ød (mm) | ØG (mm) | H (mm) | Number of holes | ØL (mm) | ØK (mm) | A1 (mm) |
|---------|----|---------|--------|--------|---------|---------|--------|-----------------|---------|---------|---------|
| 1800 | 10 | 2115 | 52 | 47 | 1950 | 1775 | 244 | 44 | 50 | 2020 | |
| 1800 | 16 | 2130 | 70 | 65 | 1950 | 1734 | 253 | 44 | 57 | 2020 | |
| 2000 | 10 | 2325 | 55 | 50 | 2150 | 1975 | 270 | 48 | 50 | 2230 | |
| 2000 | 16 | 2345 | 75 | 70 | 2150 | 1930 | 280 | 48 | 62 | 2230 | |
| 2000 | 25 | | | | | | | | | | |

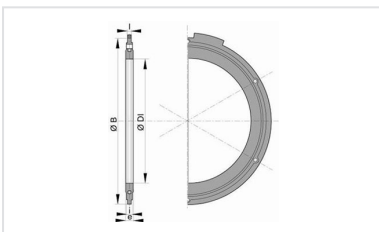
Field of use:

- For drinking water networks

Main characteristics:

- External and internal coating : Blue epoxy powder 250 microns average thickness with a minimum of 200 microns, conforming to EN 14901 (PECB)
- In conformity with EN 545:2010 and ISO 2531:2009

Linked products



Flanged joint with hot galvanized steel bolts, nuts and washers

The information on this sketch is, to the best of our knowledge correct at the time of printing. However Saint-Gobain are constantly looking at ways of improving their products and services therefore reserve the right to change without prior notice, any of the data shown. Any orders placed will be subject to our Standard Conditions of Sale, available on request.