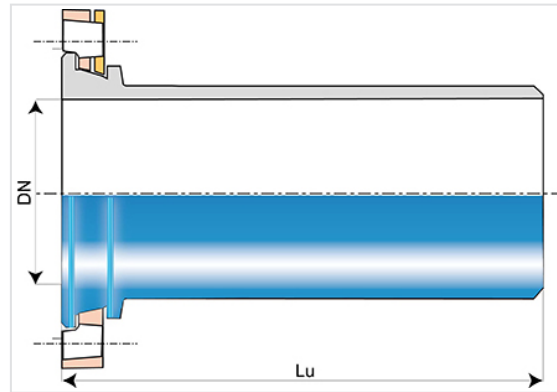


## Flange Spigot (PECB) with Rotatable Flange



DN (mm)	Lu (mm)	PN 10		PN 16		PN 25		PN 40	
		Mass (kg)	References	Mass (kg)	References	Mass (kg)	References	Mass (kg)	References
60	350	6.00	SEA60BU10TT	6.00	SEA60BU10TT				
80	350	8.00	SEA80BU10TT	8.00	SEA80BU10TT	8.00	SEA80BU10TT	8.00	SEA80BU10TT
100	350	8.56	SEB10BU10TT	8.56	SEB10BU10TT	10.10	SEB10BU30TT	10.10	SEB10BU30TT
150	400	13.96	SEB15BU10TT	13.96	SEB15BU10TT				
200	400	20.60	SEB20BU10TT	20.50	SEB20BU20TT				
250	400	34.00	SEB25BU10TT	33.50	SEB25BU20TT				
300	450	46.80	SEB30BU10TT	46.10	SEB30BU20TT				
350	435	57.44	SEB35BU10TT2	58.59	SEB35BU20TT2				
400	455	70.14	SEB40BU10TT2	74.87	SEB40BU20TT2	84.32	SEB40BU30TT2		
450	475	85.89	SEB45BU10TT2	90.93	SEB45BU20TT2	101.12	SEB45BU30TT2		
500	495	105.53	SEB50BU10TT2	119.18	SEB50BU20TT2	125.48	SEB50BU30TT2		
600	535	147.84	SEB60BU10TT2	174.09	SEB60BU20TT2	177.24	SEB60BU30TT2		

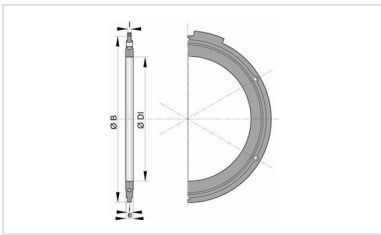
### Field of use:

- For drinking water networks

## Main characteristics:

- External and internal coating : Blue epoxy powder 250 microns average thickness with a minimum of 200 microns, conforming to EN 14901 (PECB)
- In conformity with EN 545:2010 and ISO 2531:2009

## Linked products



Flanged joint with hot  
galvanized steel bolts, nuts  
and washers

*The information on this sketch is, to the best of our knowledge correct at the time of printing. However Saint-Gobain are constantly looking at ways of improving their products and services therefore reserve the right to change without prior notice, any of the data shown. Any orders placed will be subject to our Standard Conditions of Sale, available on request.*