

### Assembling and disassembling wedges for Universal Ve Joint



| Type                           | DN (mm) | Number | Mass (kg) | References |
|--------------------------------|---------|--------|-----------|------------|
| Disassembling set              | 80      | 3      | 1.20      | 241556     |
| Disassembling set              | 100     | 3      | 1.20      | 110281     |
| Disassembling set              | 125     | 4      | 1.80      | 175872     |
| Disassembling set              | 150     | 4      | 2.40      | 110282     |
| Disassembling set              | 200     | 4      | 2.40      | 110283     |
| Disassembling set              | 250     | 4      | 3.20      | 110284     |
| Disassembling set              | 300     | 4      | 4.00      | 110285     |
| Disassembling set              | 800     | 14     | 3.90      | 210111     |
| Disassembling set              | 900     | 16     | 3.90      | 179110     |
| Disassembling set              | 1000    | 18     | 4.40      | 179121     |
| Disassembling set              | 1100    | 18     | 4.40      | 280120     |
| Disassembling set              | 1400    | 20     | 8.70      | 179122     |
| Disassembling set              | 1600    | 24     | 10.44     | 257620     |
| Kit of (x) wedges for assembly | 800     | 7      | 1.74      | 210110     |
| Kit of (x) wedges for assembly | 900     | 8      | 2.20      | 179107     |
| Kit of (x) wedges for assembly | 1000    | 9      | 2.45      | 179108     |
| Kit of (x) wedges for assembly | 1100    | 9      | 2.61      | 280119     |
| Kit of (x) wedges for assembly | 1200    | 10     | 2.80      | 179109     |
| Kit of (x) wedges for assembly | 1400    | 10     | 4.00      | 249123     |
| Kit of (x) wedges for assembly | 1500    | 12     | 4.88      | 269985     |
| Kit of (x) wedges for assembly | 1600    | 12     | 5.00      | 257631     |
| Lever                          |         | 1      | 0.20      | 110279     |

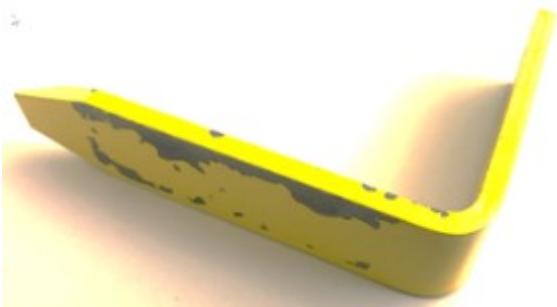
| Type   | DN (mm) | Number | Mass (kg) | References |
|--|---------|--------|-----------|------------|
| Positioning clamp                                |         | 1      | 0.50      | 279834     |
| Wedge assembly support for assembly locking ring | 80-200  | 1      | 0.10      | 110280     |
| Wedge assembly support for assembly locking ring | 250-700 | 1      | 0.10      | 266560     |
| Wedge dismantling locking ring                   | 250     | 4      | 0.05      | 110839     |
| Wedge dismantling locking ring                   | 350     | 4      | 0.06      | 110840     |
| Wedge dismantling locking ring                   | 450     | 5      | 0.10      | 110715     |
| Wedge dismantling locking ring                   | 600     | 5      | 0.11      | 110719     |
| Wedge dismantling locking ring                   | 700     | 5      | 0.13      | 110758     |



Lever to install the locking ring for Universal Ve / Alpinal / Tis-K Joint



Wedges lever assembly support f... Universal Ve / Alpinal / Tis-K Joint



Wedges assembly support for Universal Ve / Alpinal / Tis-K Joint



Clamp to install wedge assembly support for Universal Ve / Alpinal ... Tis-k Joint



Kit of wedges for dismantling of the Universal Ve / Alpinal / Tis-K Joint



Wedges for dismantling of the Universal Ve / Alpinal / Tis-K Joint



Kit of wedges for dismantling of the Universal Ve Joint

*The information on this sketch is, to the best of our knowledge correct at the time of printing. However Saint-Gobain are constantly looking at ways of improving their products and services therefore reserve the right to change without prior notice, any of the data shown. Any orders placed will be subject to our Standard Conditions of Sale, available on request.*